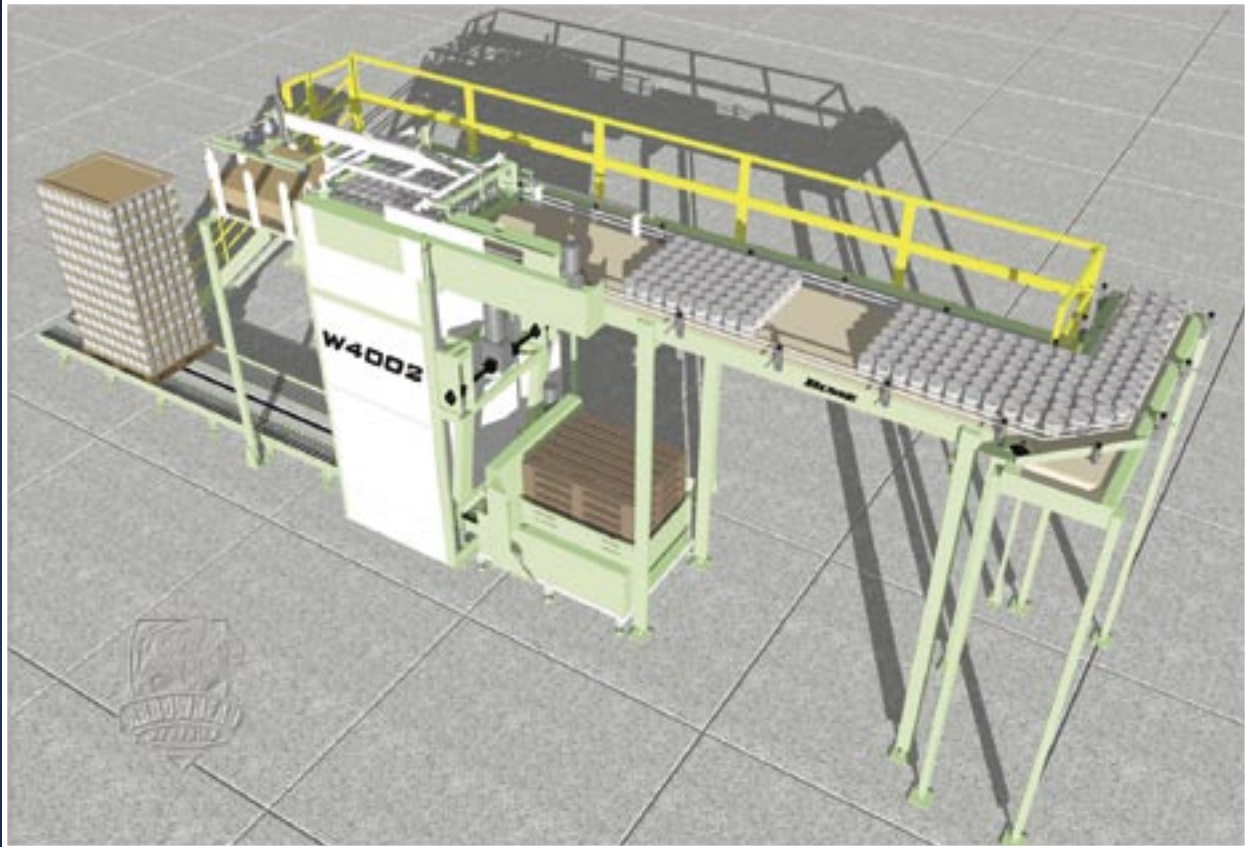


# CLASSIC "W" SERIES™

## Bulk Depalletizer



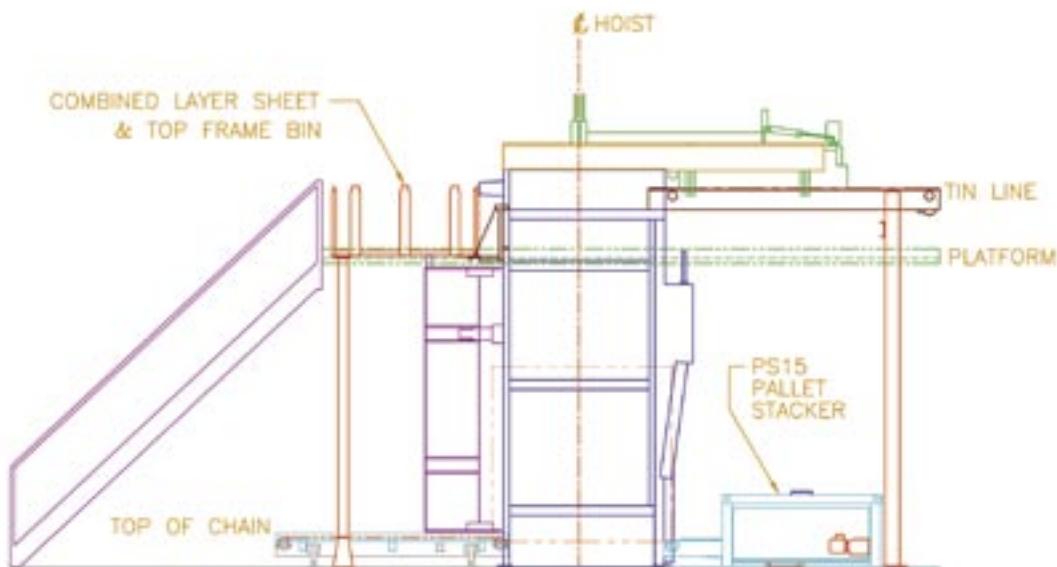
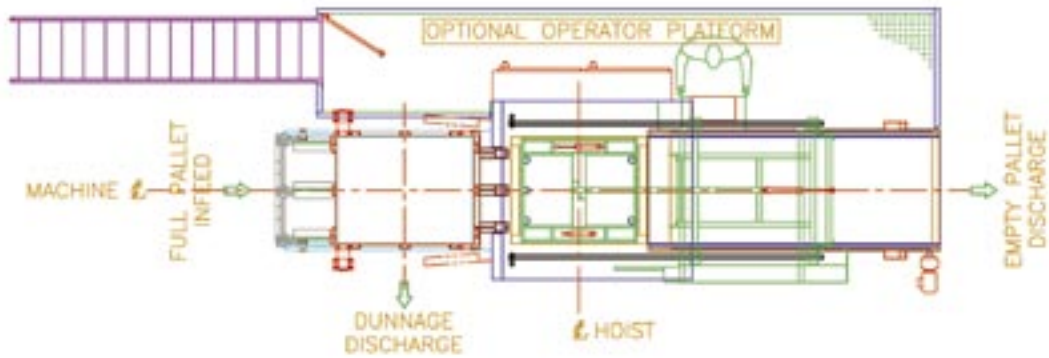
FEATURES	MODELS					
	W3001	W3002	W4001	W4002	W5001	W5002
Semi-Automatic Sweep Functions	S	O	S	O	S	O
Automatic Sweep Function	•	S	•	S	•	S
Manual Sheet Removal	S	•	S	•	S	•
Automatic Single-Stage Sheet Removal	O	S	O	S	O	S
Automatic Dual-Stage Sheet Removal	•	•	•	•	•	•
Manual Top Frame Removal	S	•	S	•	S	•
Automatic Single-Stage Top Frame Removal	O	S	O	S	O	S
Automatic Dual-Stage Top Frame Removal	•	•	•	•	•	•
Semi-Automatic Pallet Change Cycle	S	•	S	•	S	•
Automatic Pallet Change Cycle	•	S	•	S	•	S
Bottom Pallet Ejection	S	S	S	S	S	S
Bottom Pallet Ejection – High Speed	•	•	•	•	•	•
Monochrome Touch Screen Operator Interface	•	S	•	S	•	S
Color Touch Screen Operator Interface	•	O	•	O	•	O
Control Voltage – 24 VDC	S	S	S	S	S	S
Control Voltage – 110 VAC	O	O	O	O	O	O
Additional Dunnage Capacity and Collation	•	•	•	•	•	•
Pallet Conveying	O	O	O	O	O	O
Container Single Filing	O	O	O	O	O	O
Container Conveying	O	O	O	O	O	O

CONTAINERS	MODELS					
	W3001	W3002	W4001	W4002	W5001	W5002
Glass Round	S	S	•	•	•	•
Glass Non-Round	O	O	•	•	•	•
Metal Round	•	•	S	S	•	•
Metal Non-Round	•	•	O	O	•	•
Plastic Round	•	•	•	•	S	S
Plastic Non-Round	•	•	•	•	O	O
Composite Round	•	•	•	•	S	S
Composite Non-Round	•	•	•	•	O	O

S = Standard

O = Optional

• = Not Available / Applicable



### INLINE FLOW

STANDARD PARAMETERS	CLASSIC "W" SERIES
Machine Speed, Sweeps/Minute	Up to 4
Maximum Load Height, Inches (mm)	110 (2790)
Maximum Load Weight, Pounds (Kg)	Up to 4000 (1810)
Standard Pallet Size, Inches (mm)	44 x 56 (1120 x 1420)
OPTIONAL - Pallet Width Range, Inches (mm)	40-50 (1000-1143)
OPTIONAL - Pallet Length Range, Inches (mm)	40-56 (1220-1420)
Standard TOC, Inches (mm)	12 (306)
Minimum Pallet Conveyor TOC, Inches (mm)	12 (305)
Standard Tin Line (TL), Inches (mm)	156 (3952)
Minimum Tin Line (TL), Inches (mm)	144 (3656)
Electrical Power	460V/3 phase/60 Hz
Control Voltage	24 VDC
Compressed Air Volume, CFM (Liters/min)	15 (7)
Compressed Air Pressure, PSI (KPa)	80 (550)
Compressed Air Inlet	3/4" NPT