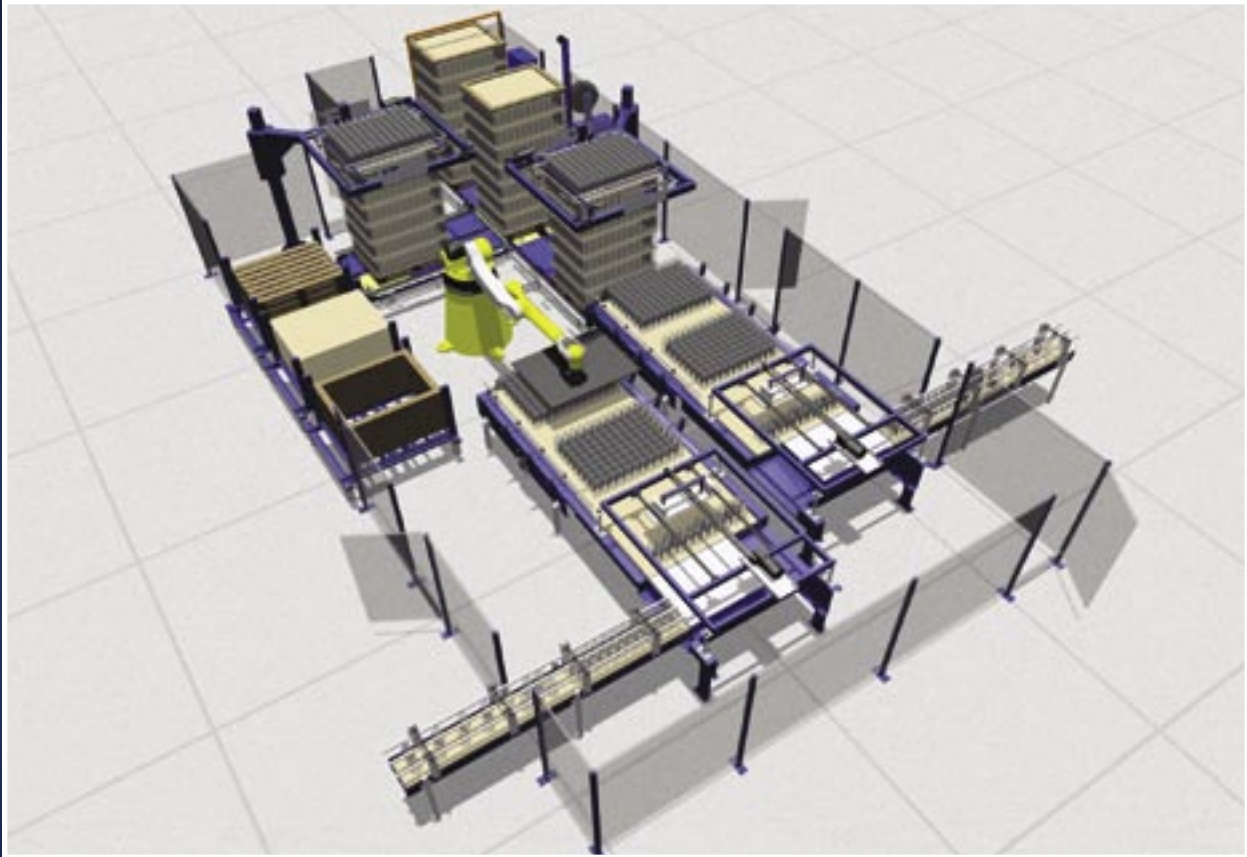


# ECLIPSE SERIES™

## Bulk Palletizer



| STANDARD PARAMETERS                         | ECLIPSE SERIES        |
|---|-----------------------|
| Machine Speed, Layers/Minute                | Up to 4               |
| Pallet Change Cycle, Seconds - UD           | 35                    |
| Maximum Load Height, Inches (mm)            | 110 (2790)            |
| Maximum Layer Weight, Pounds (Kg)           | Up to 75 (35)         |
| Standard Pallet Size, Inches (mm)           | 44 x 56 (1120 x 1420) |
| OPTIONAL – Pallet Width Range, Inches (mm)  | 37-57 (940-1450)      |
| OPTIONAL – Pallet Length Range, Inches (mm) | 37-57 (940-1450)      |
| Maximum Capacity Of Empty Pallets           | 14                    |
| Maximum Capacity of Separator Sheet Stack   | 220                   |
| Maximum capacity of Top Frame Stack         | 14                    |
| Standard TOC, Inches (mm)                   | 18 (450)              |
| Minimum Pallet Conveyor TOC, Inches (mm)    | 13 (330)              |
| Standard Tin Line (TL), Inches (mm)         | 40 (1015)             |
| Minimum Tin Line (TL), Inches (mm)          | 36 (915)              |
| Electrical Power                            | 460V/3 phase/60 Hz    |
| Control Voltage                             | 24 VDC                |
| Compressed Air Volume, CFM (Liters/min)     | 15 (7)                |
| Compressed Air Pressure, PSI (KPa)          | 80 (550)              |
| Compressed Air Inlet                        | 3/4" NPT              |

