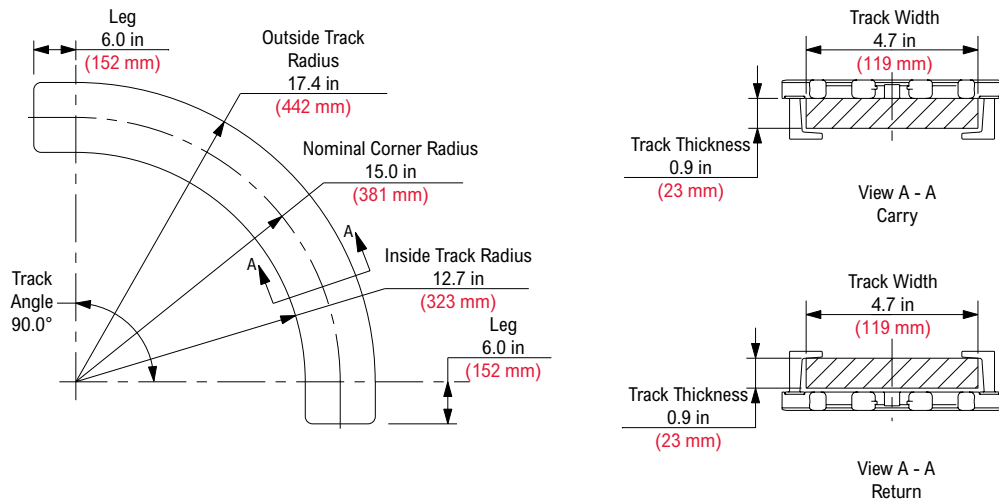


Corner Track (One Piece)

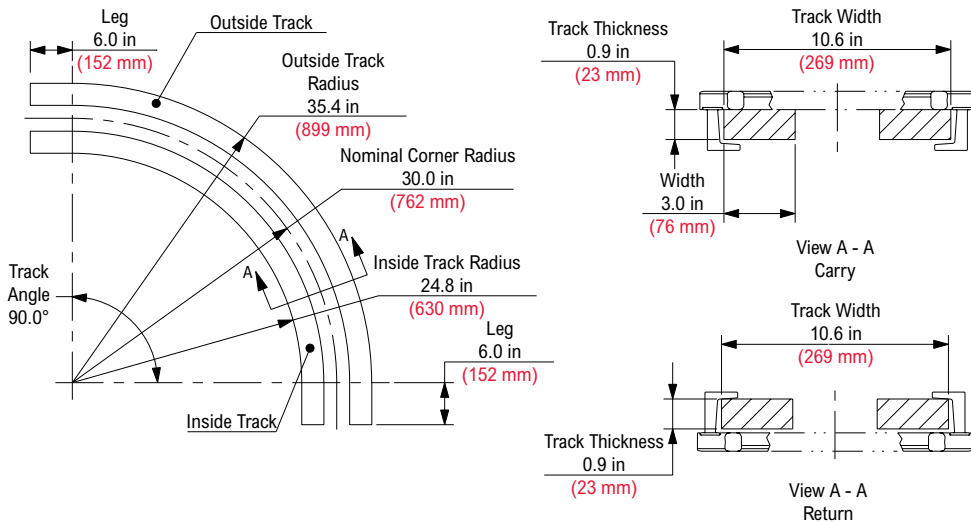


| Corner Track Part Number | Corner Track Number | Chain Width | | Material | Color | Approximate Weight | |
|--------------------------|---------------------|-------------|-------|-----------|-------|--------------------|------|
| | | in | mm | | | lbs | kg |
| 114-3106-1 | N15R7 | 6 | 152.4 | Nylatron® | Black | 8.18 | 3.71 |
| 114-3107-1 | U15R7 | 6 | 152.4 | UHMWPE | White | 8.18 | 3.71 |

Nylatron® is a registered trademark of Quadrant Engineering Plastics Products.

For 6 in (152.4 mm) chain only.

Corner Track (Two Piece)

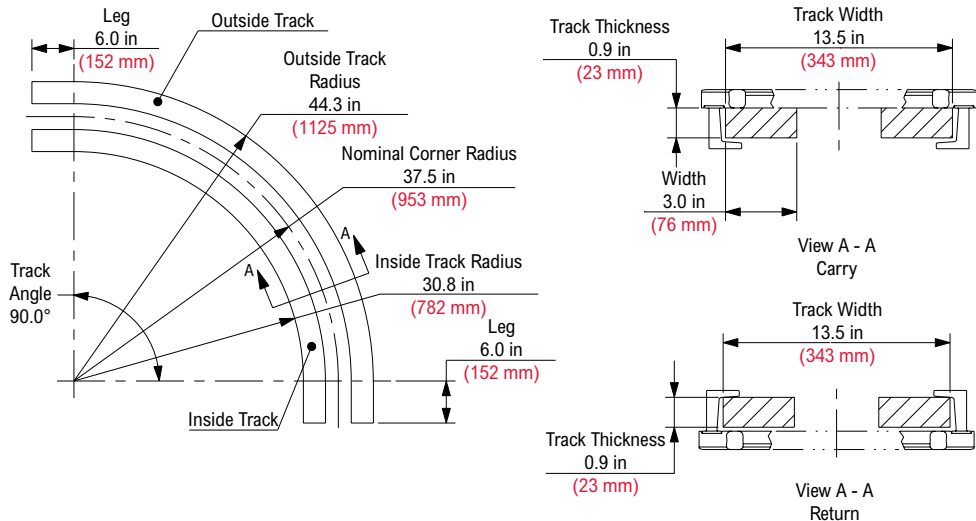


| Corner Track Kit Number | Corner eTrack Kit Number | Corner Track Number | Chain Width | | Track Position | Material | Color | Approximate Weight | |
|-------------------------|--------------------------|---------------------|-------------|-------|----------------|-----------|-------|--------------------|------|
| | | | in | mm | | | | lbs | kg |
| Carry | | | | | | | | | |
| 614-482-1 | 114-4284-1 | N30R7 | 12 | 304.8 | Outside | Nylatron® | Black | 10.30 | 4.67 |
| | 114-4285-2 | U30R7 | 12 | 304.8 | Inside | UHMWPE | White | 10.30 | 4.67 |
| Return | | | | | | | | | |
| 614-483-1 | 114-4284-2 | U30R7 | 12 | 304.8 | Outside | UHMWPE | White | 10.30 | 4.67 |

Nylatron® is a registered trademark of Quadrant Engineering Plastics Products.

For 12 in (304.8 mm) chain only.

Corner Track (Two Piece)

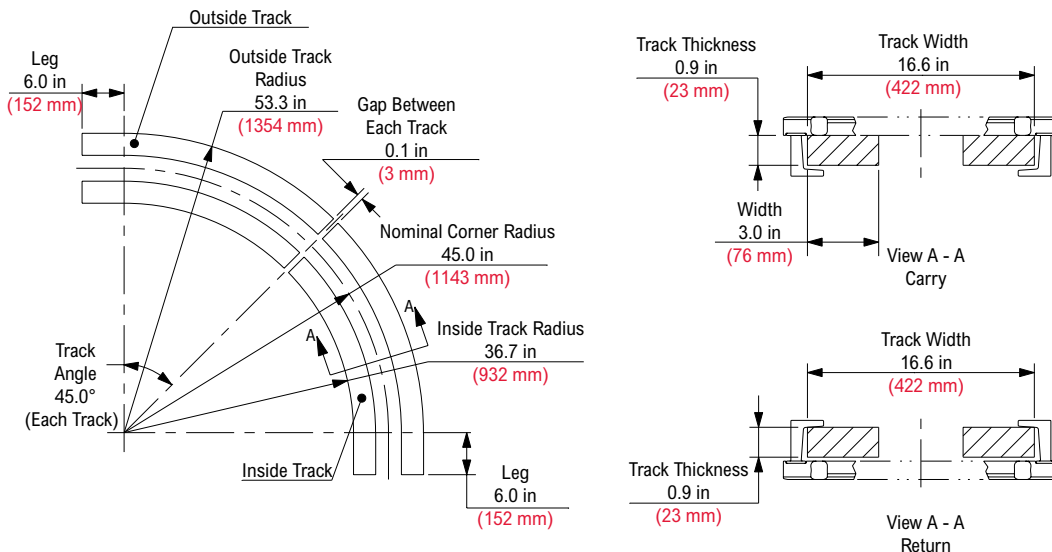


| Corner Track Part Number | Corner Track Part Number | Corner Track Kit Number | Chain Width | | Track Position | Material | Color | Approximate Weight | |
|--------------------------|--------------------------|-------------------------|-------------|-------|----------------|-----------|-------|--------------------|------|
| | | | in | mm | | | | lbs | kg |
| Carry | | | | | | | | | |
| 614-202-1 | 114-3007-1 | U37.5R7 | 15 | 381.0 | Inside | UHMWPE | White | 12.73 | 5.77 |
| | 114-3031-1 | N37.5R7 | 15 | 381.0 | Outside | Nylatron® | Black | 12.73 | 5.77 |
| Return | | | | | | | | | |
| 614-203-1 | 114-3007-1 | U37.5R7 | 15 | 381.0 | Inside | UHMWPE | White | 12.73 | 5.77 |

Nylatron® is a registered trademark of Quadrant Engineering Plastics Products.

For 15 in (381.0 mm) chain only.

Corner Track (Four Piece)

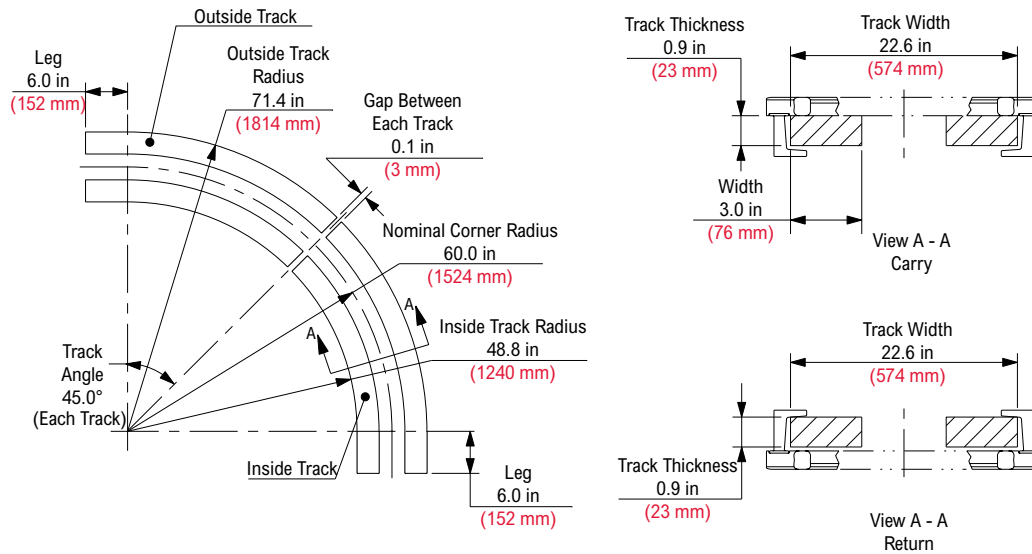


| Corner Track Part Number | Corner Track Part Number | Corner Track Number | Chain Width | | Track Position | Material | Color | Approximate Weight | |
|--------------------------|--------------------------|---------------------|-------------|-------|----------------|-----------|-------|--------------------|------|
| | | | in | mm | | | | lbs | kg |
| Carry | | | | | | | | | |
| 614-377-1 | 114-3570-1 | U45R7 | 18 | 457.2 | Inside | UHMWPE | White | 16.86 | 7.65 |
| | 114-3571-1 | N45R7 | 18 | 457.2 | Outside | Nylatron® | Black | 16.86 | 7.65 |
| Return | | | | | | | | | |
| 614-378-1 | 114-3570-1 | U45R7 | 18 | 457.2 | Inside | UHMWPE | White | 16.86 | 7.65 |

Nylatron® is a registered trademark of Quadrant Engineering Plastics Products.

For 18 in (457.2 mm) chain only.

Corner Track (Four Piece)

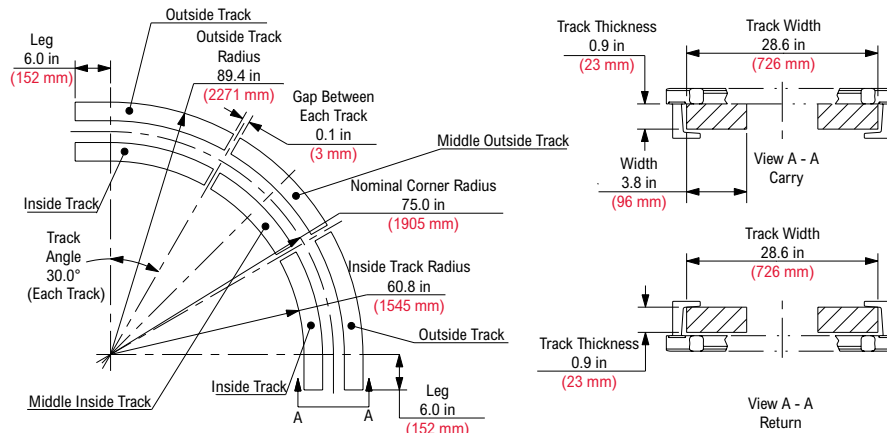


| Corner Track Part Number | Corner Track Part Number | Corner Track Number | Chain Width | | Track Position | Material | Color | Approximate Weight | |
|--------------------------|--------------------------|---------------------|-------------|-------|----------------|-----------|-------|--------------------|------|
| | | | in | mm | | | | lbs | kg |
| Carry | | | | | | | | | |
| 614-296-1 | 114-3390-1 | U60R7 | 24 | 609.6 | Inside | UHMWPE | White | 20.40 | 9.25 |
| | 114-3392-1 | N60R7 | 24 | 609.6 | Outside | Nylatron® | Black | 20.40 | 9.25 |
| Return | | | | | | | | | |
| 614-297-1 | 114-3390-1 | U60R7 | 24 | 609.6 | Inside | UHMWPE | White | 20.40 | 9.25 |
| | 114-3391-1 | U60R7 | 24 | 609.6 | Outside | UHMWPE | White | 20.40 | 9.25 |

Nylatron® is a registered trademark of Quadrant Engineering Plastics Products.

For 24 in (609.6 mm) chain only.

Corner Track (Six Piece)



| Corner Track Part Number | Corner Track Part Number | Corner Track Number | Chain Width | | Track Position | Material | Color | Approximate Weight | |
|--------------------------|--------------------------|---------------------|-------------|-------|----------------|-----------|-------|--------------------|-------|
| | | | in | mm | | | | lbs | kg |
| Carry | | | | | | | | | |
| 614-404-1 | 114-4012-1 | N75R7 | 30 | 762.0 | Outside | Nylatron® | Black | 32.19 | 14.60 |
| | 114-4013-1 | N75R7 | 30 | 762.0 | Middle Outside | Nylatron® | Black | 32.19 | 14.60 |
| | 114-4016-2 | U75R7 | 30 | 762.0 | Inside | UHMWPE | White | 28.39 | 12.88 |
| | 114-4019-2 | U75R7 | 30 | 762.0 | Middle Inside | UHMWPE | White | 28.39 | 12.88 |
| Return | | | | | | | | | |
| 614-405-1 | 114-4012-2 | U75R7 | 30 | 762.0 | Outside | UHMWPE | White | 28.39 | 12.88 |
| | 114-4013-2 | U75R7 | 30 | 762.0 | Middle Outside | UHMWPE | White | 28.39 | 12.88 |
| | 114-4016-2 | U75R7 | 30 | 762.0 | Inside | UHMWPE | White | 28.39 | 12.88 |
| | 114-4019-2 | U75R7 | 30 | 762.0 | Middle Inside | UHMWPE | White | 28.39 | 12.88 |

Nylatron® is a registered trademark of Quadrant Engineering Plastics Products.

For 30 in (762.0 mm) chain only.