



**RYSON**  
INTERNATIONAL, INC

# Mass Flow Spiral Conveyors



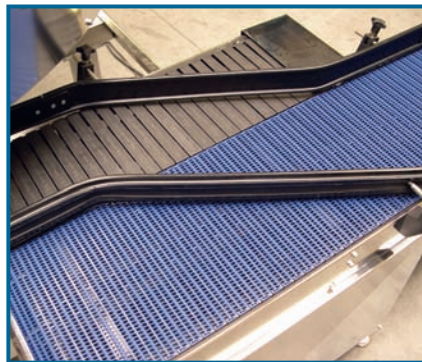
**The Ryson Mass Flow Spirals are designed to handle full and empty bottles, cans, jars and other similar containers.**

Products are conveyed up or down in a continuous mass flow. Ryson Spirals have a small footprint and provide considerable space savings compared to conventional methods.

The Mass Flow Spirals are based on the already proven and reliable Ryson Spiral technology. Only one drive motor is needed, equating to substantial savings in controls and systems integration. Most spirals are shipped in one piece, pre-assembled and pre-tested, thereby drastically reducing time and cost of installation. All Ryson Spirals are very quiet and need little maintenance. Many spirals operate 24 hours a day, 7 days a week.

The Mass Flow Spirals are equipped with extended in and outfeed tangents to facilitate smooth side transfer to and from external conveyors. They can be delivered with 8" or 12" wide slats and are available in powdered coated carbon steel, stainless steel and washdown versions.

Ryson is the preferred supplier of vertical conveying solutions where quality and reliability matters. Our customers appreciate Ryson's service minded business approach and innovative products, such as, spiral conveyors, continuous lifts, vertical accumulation buffers, incline and decline slat conveyors and bucket elevators.



**RYSON**  
INTERNATIONAL, INC.