



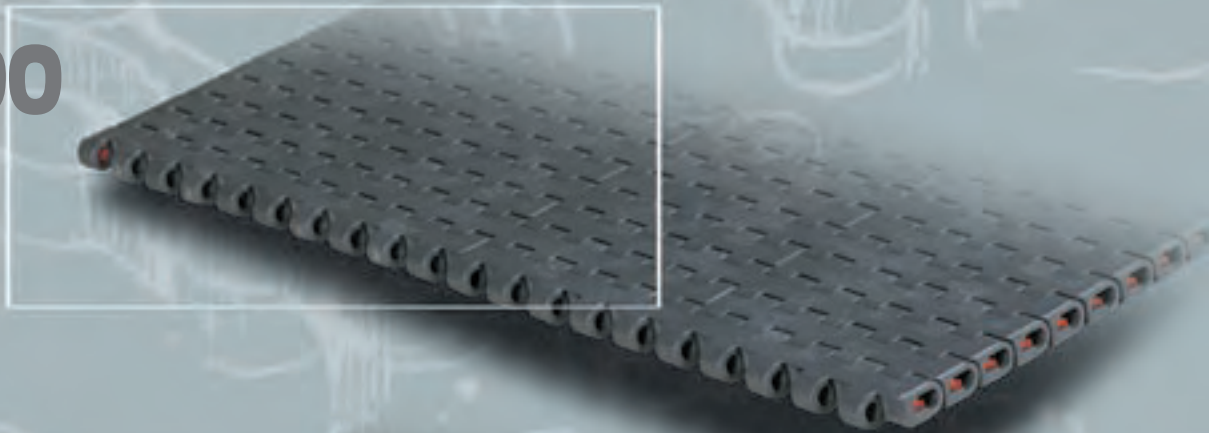
Matveyor[®] ULTOP[®]



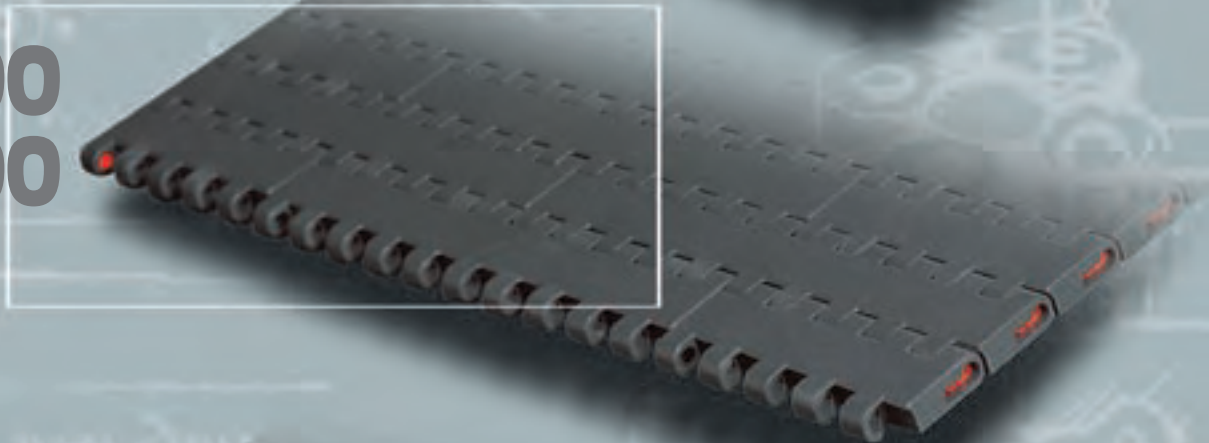
Matveyor®

Light Duty - Metric Standard

600



1600
1500



783T
782M
783M



RR1600



600 SERIES - 1/2" PITCH, LIGHT DUTY

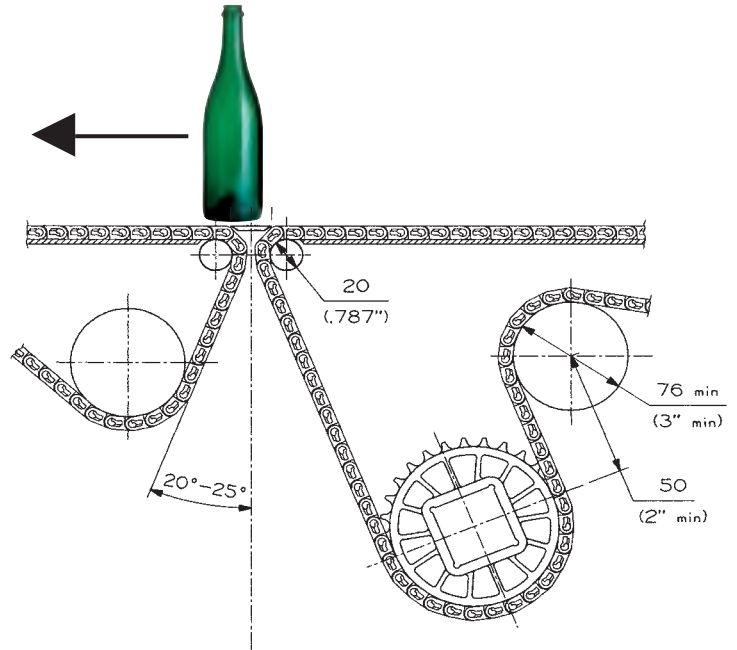
MODULAR PLASTIC BELTS

Installation guidelines

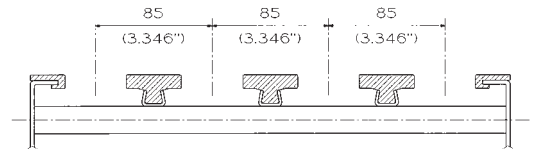
These belts are the ideal solution for applications where a head transfer of the conveyed products is preferred or required.

Head transfer of products: conveyor set-up guidelines

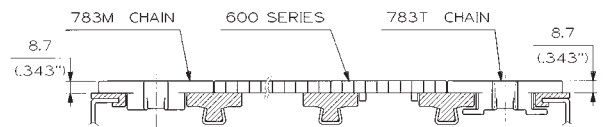
The dimensions shown below refer to the use of a 20mm roller for the head transfer and can normally be adopted. However, it is recommended that pre-production tests are carried out and adjustments are made as necessary to achieve successful product transfer.



Widths and guide shoes designed for installation on conveyors with 85 mm pitch between parallel tracks and 44 mm clearance between wear strips.



600 series belts can be used together with magnetic or tab sideflexing chains 783 series (see pag. 123). Same thickness for easy installation side by side and standardization of wear strips.



For 90° products transfer, also availability of ATM (Active Transfer Modules) series (see pag. 118).

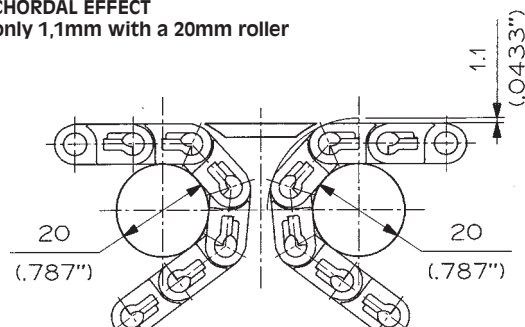


FEATURES AND BENEFITS

Reduced chordal effect

Vertical oscillation of the belt when engaging the sprocket is known as "chordal effect" and, if excessive, it can cause unstable products to fall during head transfer. The "chordal effect" is minimized due to the reduced pitch ($\frac{1}{2}$ ") and the special design of the hinges.

CHORDAL EFFECT
only 1,1mm with a 20mm roller



Easy assembly and disassembly

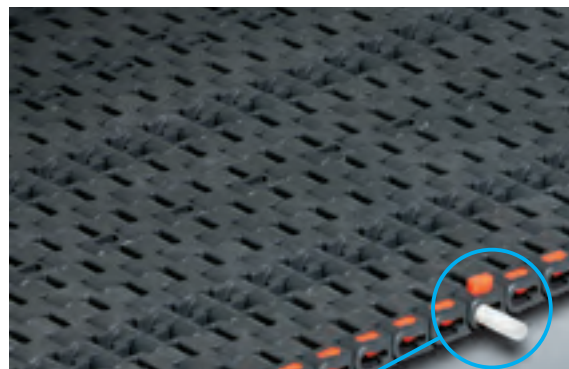
Retention clips can easily be moved from the side of the belt for assembling and disassembling. Only a small movement is required and the clip remains in its pocket.

Reliable drive

The highly resistant cross section offered by the double row of teeth pockets ensures high drive capacity and long wear and fatigue life.

High sliding surface area

The modules have the industry's largest surface area to maximize the wear resistance.



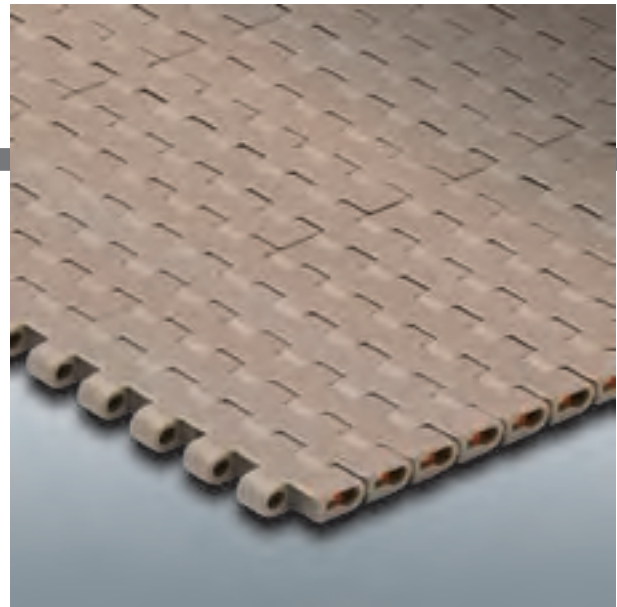


Matveyor®

600 SERIES - 1/2" PITCH, SOLID TOP

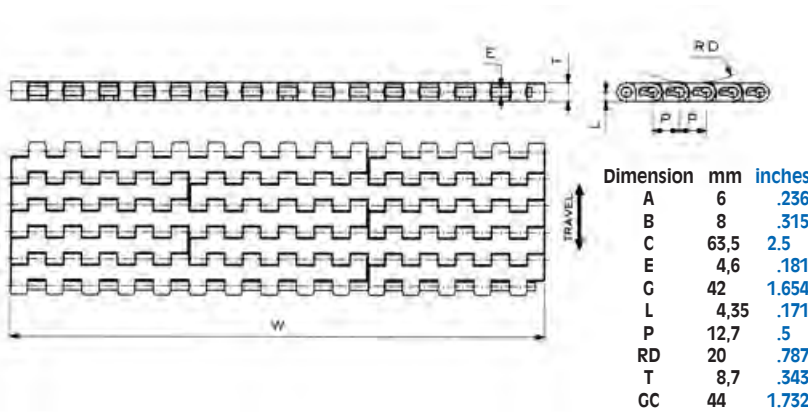
DEDICATED WIDTHS AND MODULAR BELTS

This belt offers a smooth and completely closed surface to provide excellent support and minimize product tippage. Particularly suitable for conveyors where a head transfer of products is required.

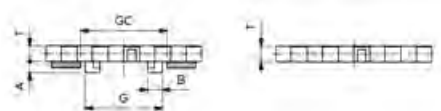


Products	Ref.	Standard Materials	
		LW	DK
Solid top	600		
Solid top with guide	600G		

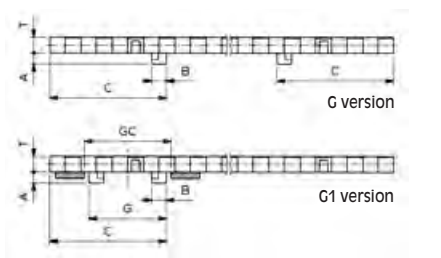
Belt widths: 85 mm (3.346") or wider in 85 mm increments
 - Pin material: PP- Polypropylene (PBT on request)
 - Working Load (at 25°C/77°F): 14000 N/m (960 lb/ft)



Shoe guide position
Dedicated width:



Modular belt:



Belt material
see page 13



Sprockets and Idler
wheels see pages 219÷223



Sprocket positioning
see pages 302÷303

600 (Solid top - 1/2" Pitch)

BELT NOMINAL WIDTH "W"	ACETAL RESIN (LW)				REGINA DK			BELT WEIGHT		
	REGINA REF.		REGINA REF.		REGINA REF.					
	mm	inches	WITHOUT GUIDE	WITH GUIDE G	WITH GUIDE G1	WITHOUT GUIDE	WITH GUIDE G	WITH GUIDE G1	kg/m	lbs/ft
85	3.35	600B LW 0085	600BG LW 0085		600B DK 0085	600BG DK 0085			0.81	0.54
170	6.69	600B LW 0170	600BG LW 0170	600BG1 LW 0170	600B DK 0170	600BG DK 0170	600BG1 DK 0170		1,61	1.08
255	10.04	600B LW 0255	600BG LW 0255	600BG1 LW 0255	600B DK 0255	600BG DK 0255	600BG1 DK 0255		2,40	1.61
340	13.39	600B LW 0340	600BG LW 0340	600BG1 LW 0340	600B DK 0340	600BG DK 0340	600BG1 DK 0340		3,20	2.15
425	16.73	600B LW 0425	600BG LW 0425	600BG1 LW 0425	600B DK 0425	600BG DK 0425	600BG1 DK 0425		3,99	2.68
510	20.08	600B LW 0510	600BG LW 0510	600BG1 LW 0510	600B DK 0510	600BG DK 0510	600BG1 DK 0510		4,78	3.21
595	23.43	600B LW 0595	600BG LW 0595	600BG1 LW 0595	600B DK 0595	600BG DK 0595	600BG1 DK 0595		5,58	3.75
680	26.77	600B LW 0680	600BG LW 0680	600BG1 LW 0680	600B DK 0680	600BG DK 0680	600BG1 DK 0680		6,37	4.28
765	30.12	600B LW 0765	600BG LW 0765	600BG1 LW 0765	600B DK 0765	600BG DK 0765	600BG1 DK 0765		7,17	4.82
850	33.46	600B LW 0850	600BG LW 0850	600BG1 LW 0850	600B DK 0850	600BG DK 0850	600BG1 DK 0850		7,96	5.35
935	36.81	600B LW 0935	600BG LW 0935	600BG1 LW 0935	600B DK 0935	600BG DK 0935	600BG1 DK 0935		8,75	5.88
1020	40.16	600B LW 1020	600BG LW 1020	600BG1 LW 1020	600B DK 1020	600BG DK 1020	600BG1 DK 1020		9,55	6.42
1105	43.50	600B LW 1105	600BG LW 1105	600BG1 LW 1105	600B DK 1105	600BG DK 1105	600BG1 DK 1105		10,34	6.95
1190	46.85	600B LW 1190	600BG LW 1190	600BG1 LW 1190	600B DK 1190	600BG DK 1190	600BG1 DK 1190		11,14	7.49
1275	50.20	600B LW 1275	600BG LW 1275	600BG1 LW 1275	600B DK 1275	600BG DK 1275	600BG1 DK 1275		11,93	8.02
1360	53.54	600B LW 1360	600BG LW 1360	600BG1 LW 1360	600B DK 1360	600BG DK 1360	600BG1 DK 1360		12,73	8.56
1445	56.89	600B LW 1445	600BG LW 1445	600BG1 LW 1445	600B DK 1445	600BG DK 1445	600BG1 DK 1445		13,52	9.09
1530	60.24	600B LW 1530	600BG LW 1530	600BG1 LW 1530	600B DK 1530	600BG DK 1530	600BG1 DK 1530		14,13	9.50

Belts wider than 1530 mm available (increments of 85 mm).

Example: 1530+85=1615 mm width, without guide Ref. (in LW material) 600B LW 1615.

Standard length for belts up to a width of 680 mm: 3,048 m (10 feet).

Wider belts available in any requested length.

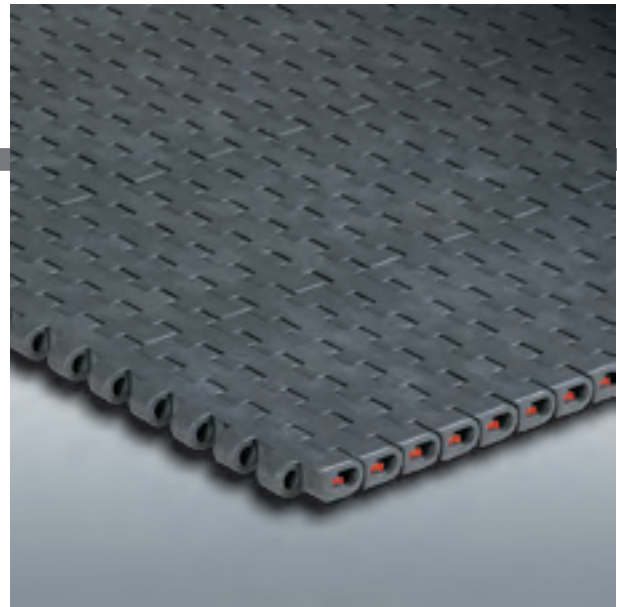


Matveyor®

600 SERIES - 1/2" PITCH, SOLID TOP

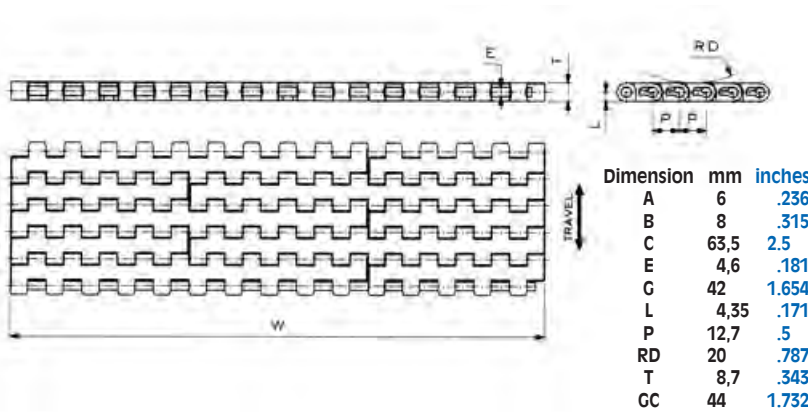
DEDICATED WIDTHS AND MODULAR BELTS

This belt offers a smooth and completely closed surface to provide excellent support and minimize product tippage. Particularly suitable for conveyors where a head transfer of products is required.

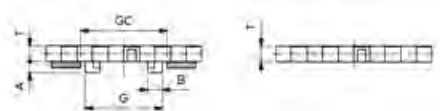


Products	Ref.	Standard Materials *PP
Solid top	600	
Solid top with guide	600G	

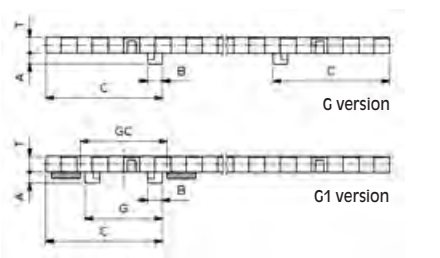
Belt widths: 85 mm (3.346") or wider in 85 mm increments
 - Pin material: PP- Polypropylene (PBT on request)
 - Working Load (at 25°C/77°F): 10000 N/m (685 lb/ft)



Shoe guide position
Dedicated width:



Modular belt:



Belt material
see page 13



Sprockets and Idler
wheels see pages 219÷223



Sprocket positioning
see pages 302÷303

600 (Solid top - 1/2" Pitch)

BELT NOMINAL WIDTH "W"		POLYPROPYLENE *(PP)			BELT WEIGHT	
		REGINA REF.				
mm	inches	WITHOUT GUIDE	WITH GUIDE G	WITH GUIDE G1	kg/m	lbs/ft
85	3.35	600B PP 0085	600BG PP 0085		0,56	0.38
170	6.69	600B PP 0170	600BG PP 0170	600BG1 PP 0170	1,10	0.74
255	10.04	600B PP 0255	600BG PP 0255	600BG1 PP 0255	1,64	1.10
340	13.39	600B PP 0340	600BG PP 0340	600BG1 PP 0340	2,18	1.47
425	16.73	600B PP 0425	600BG PP 0425	600BG1 PP 0425	2,72	1.83
510	20.08	600B PP 0510	600BG PP 0510	600BG1 PP 0510	3,25	2.18
595	23.43	600B PP 0595	600BG PP 0595	600BG1 PP 0595	3,79	2.55
680	26.77	600B PP 0680	600BG PP 0680	600BG1 PP 0680	4,33	2.91
765	30.12	600B PP 0765	600BG PP 0765	600BG1 PP 0765	4,87	3.27
850	33.46	600B PP 0850	600BG PP 0850	600BG1 PP 0850	5,41	3.64
935	36.81	600B PP 0935	600BG PP 0935	600BG1 PP 0935	5,94	3.99
1020	40.16	600B PP 1020	600BG PP 1020	600BG1 PP 1020	6,48	4.36
1105	43.50	600B PP 1105	600BG PP 1105	600BG1 PP 1105	7,02	4.72
1190	46.85	600B PP 1190	600BG PP 1190	600BG1 PP 1190	7,56	5.08
1275	50.20	600B PP 1275	600BG PP 1275	600BG1 PP 1275	8,10	5.45
1360	53.54	600B PP 1360	600BG PP 1360	600BG1 PP 1360	8,63	5.80
1445	56.89	600B PP 1445	600BG PP 1445	600BG1 PP 1445	9,17	6.16
1530	60.24	600B PP 1530	600BG PP 1530	600BG1 PP 1530	9,71	6.53

Belts wider than 1530 mm available (increments of 85 mm)
 Example: 1530+85=1615 mm width, without guide Ref. (in PP material) 600B PP 1615.
 *Due to different shrinkage of materials, actual width is larger than the standard.

Standard length for belts up to a width of 680 mm: 3,048 m (10 feet).
 Wider belts available in any requested length.



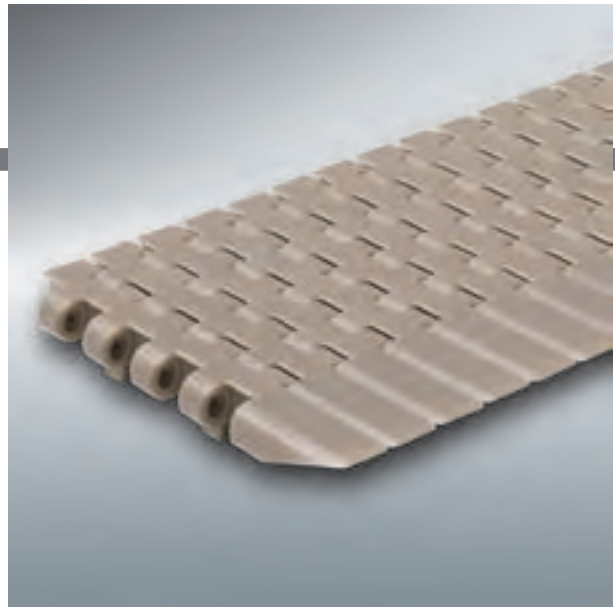
Matveyor®

NEW

600 SERIES - 1/2 PITCH, SOLID TOP

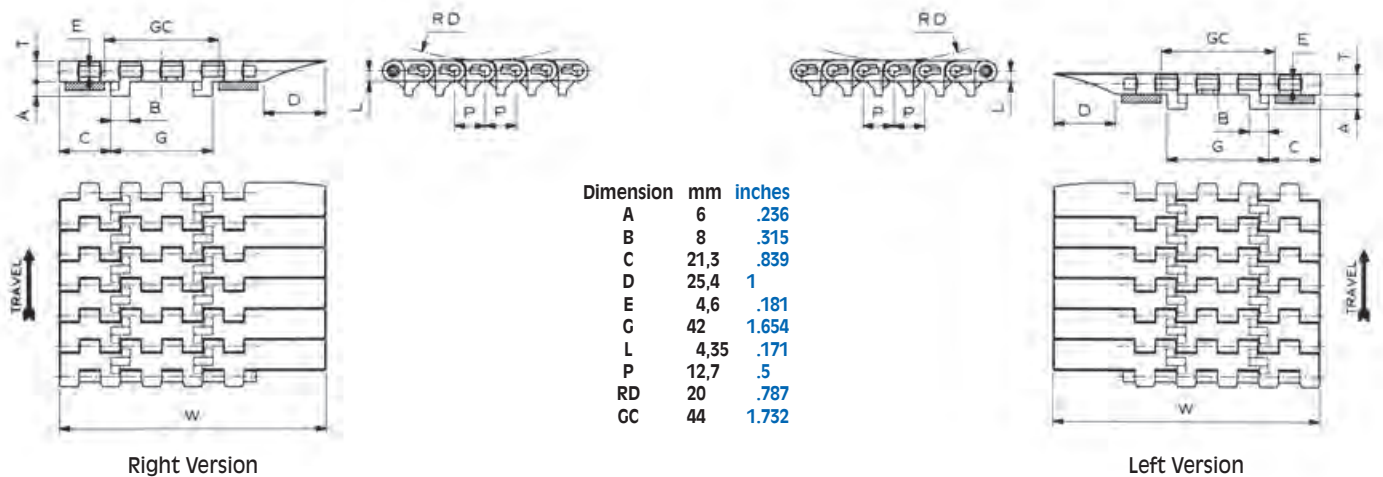
ACTIVE TRANSFER MODULES

Active transfer modules 600GATM series allow the transfer of the products between two 90° conveyor tracks without using dead plates. Available left and right version



Products	Ref.	Standard Materials		
		LW	DK	*PP
Solid top with guide	600GATM			

Pin material: PP - Polypropylene



600GATM (Solid top - Right Version)



Belt material see page 13



Sprockets and Idler wheels see pages 219+223



Sprocket positioning see pages 302-304

MATERIAL	REGINA REF.	CHAIN WIDTH W		PLATE THICKNESS T		WORKING LOAD (25°C/77°F)		CHAIN WEIGHT	
		mm	inches	mm	inches	N	lbs	kg/m	lbs/ft
ACETAL RESIN (LW)	600BGATM LW 0085 DX	110	4.33	8,7	0.34	1190	268	0,97	0.65
REGINA DK	600BGATM DK 0085 DX	110	4.33	8,7	0.34	1190	268	0,97	0.65

Standard length: 3,048 m (10 feet)

600GATM (Solid top - Left Version)



Belt material see page 13



Sprockets and Idler wheels see pages 219+223



Sprocket positioning see pages 302-304

MATERIAL	REGINA REF.	CHAIN WIDTH W		PLATE THICKNESS T		WORKING LOAD (25°C/77°F)		CHAIN WEIGHT	
		mm	inches	mm	inches	N	lbs	kg/m	lbs/ft
ACETAL RESIN (LW)	600BGATM LW 0085 SX	110	4.33	8,7	0.34	1190	268	0,97	0.65
REGINA DK	600BGATM DK 0085 SX	110	4.33	8,7	0.34	1190	268	0,97	0.65

Standard length :3,048 m (10 feet)

Example (in PP material, Right version): 600BGATM PP 0085 DX.

*Due to different shrinkage of materials, actual width is larger than the standard.



1500 AND 1600 SERIES - 1" PITCH, LIGHT DUTY

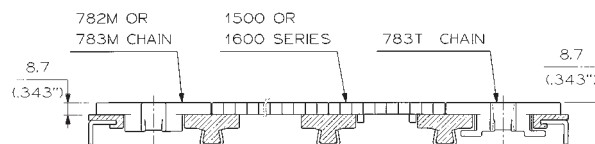
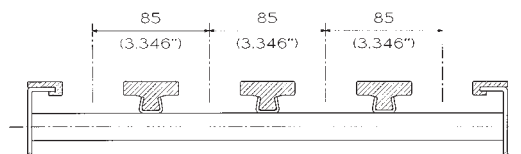
MODULAR PLASTIC BELTS

Installation guidelines

Widths and guides are designed for installation on conveyors with 85 mm pitch between parallel tracks and 44 mm clearance between the wear strips.

These belts can be used on conveyors side by side with magnetic or tab sideflexing chains 782 or 783 series (see pag. 123). Same thickness of 8,7 mm for easy installation side by side and standardization of wear strips.

For 90° products transfer, also availability of ATM (Active Trasfer Modules) series (see pag. 126÷127)



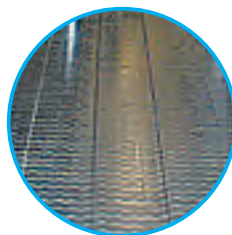
Features and Benefits

Gentle product handling

The extremely good flatness, the manufacturing accuracy, the reduced side gaps on conveyors and the availability of materials with extremely low friction coefficients make these belts suitable for high efficiency lines with unstable products.

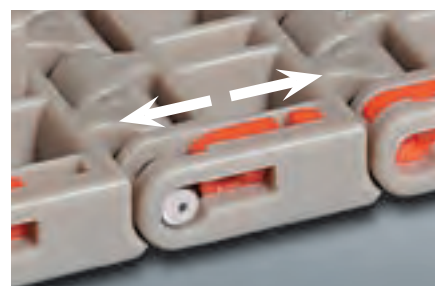
Smooth and uniform surface

The surface near the edge of the modules is uniform, with no discontinuities, thus the side transfer of products is not disturbed.



Easy assembly and disassembly

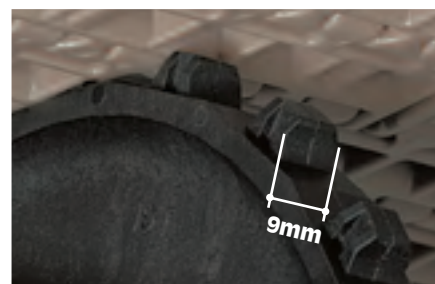
Retention clips can easily be moved from the side of the belt for assembling and disassembling. Only a small movement is required, the clip remains in the module.



Reliable drive

The accurate tooth profile with a large cross section ensures high drive capacity and long wear life of sprockets and modules.

The central pocket makes these belts bidirectional.





Matveyor®

NEW

1600 SERIES - 1" PITCH, SOLID TOP

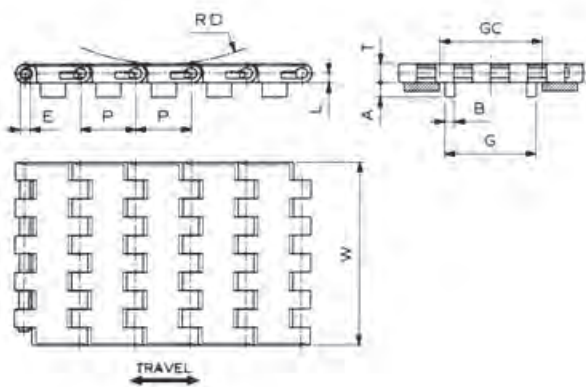
DEDICATED WIDTHS

Extremely good flatness, manufacturing accuracy, and low coefficient of friction, make the side transfer of the products very easy. Completely closed surface, no gap between the modules, even when engaging on the sprockets. Particularly suitable for glass products, small sized products and unstable containers (for example PET bottles with petaloid base).

83,8 mm wide chains available for gap reduction on 85 mm transversal pitch conveyors. Particularly suitable for inliners.



Products	Ref.	Standard Materials		
		LW	DK	*PP
Solid top with guide	1600G			
Pin material: PBT				on request



Dimension	mm	inches
A	6,7	.264
B	4,4	.173
C	21,3	.839
E	4,6	.181
G	42	1.654
L	4,35	.171
P	25,4	1
RD	20	.787
GC	44	1.732

1600 (Solid top – 1" Pitch)



Belt material see page 13



Sprockets and Idler wheels see pages 224+227



Sprocket positioning see pages 305+306

MATERIAL	REGINA REF.	CHAIN WIDTH W		PLATE THICKNESS T		WORKING LOAD (25°C/77°F)		CHAIN WEIGHT	
		mm	inches	mm	inches	N	lbs	kg/m	lbs/ft
ACETAL RESIN (LW)	1600AG LW K 3¼	82,6	3.25	8,7	0.34	1850	415	0,64	0.43
	1600AG LW K 83,8	83,8	3.30	8,7	0.34	1850	415	0,66	0.44
REGINA DK	1600AG DK K 3¼	82,6	3.25	8,7	0.34	1850	415	0,64	0.43
	1600AG DK K 83,8	83,8	3.30	8,7	0.34	1850	415	0,66	0.44

*Due to different shrinkage of materials, actual width is larger than the standard.

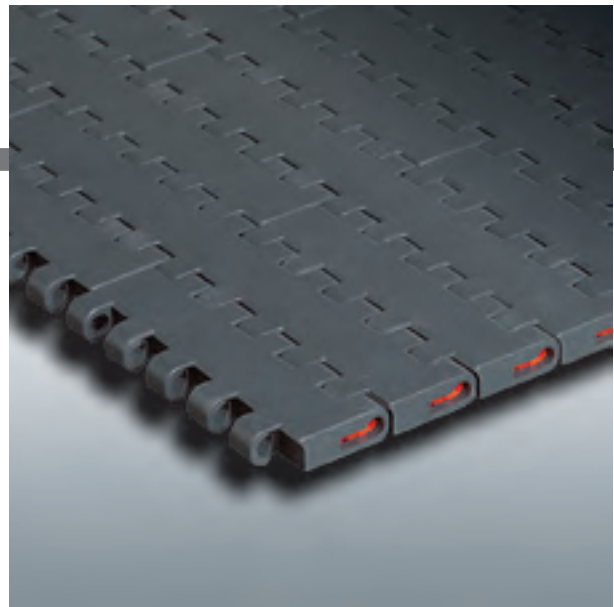
Standard length: 3,048 m (10 feet)



Matveyor®

1600 SERIES - 1" PITCH, SOLID TOP MODULAR BELTS

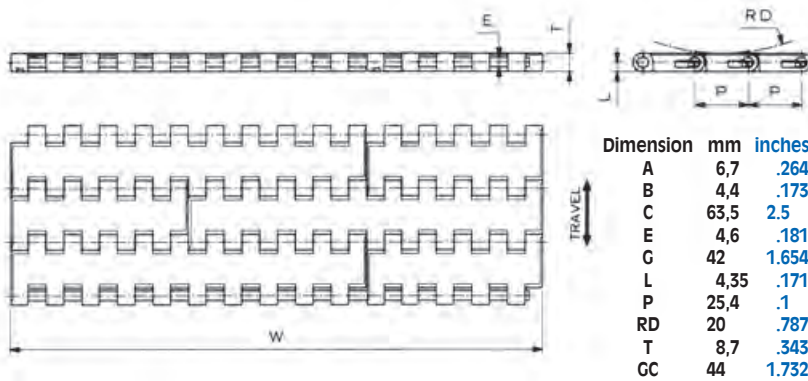
This belt offers a smooth surface to provide excellent support and minimize product tippage. Particularly suitable for glass products, small sized products and unstable containers (for example PET bottles with petaloid base).



Products	Ref.	Standard Materials		
		LW	DK	*PP
Solid top	1600			
Solid top with guide	1600G			

on request

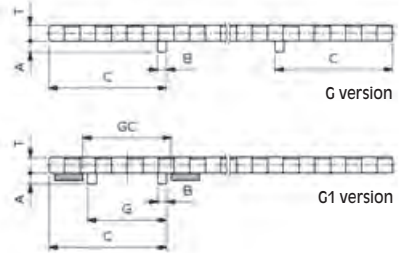
- Belt widths: 85 mm (3.346") or wider in 85 mm increments
- Pin material: PBT (dedicated width)
PP- Polypropylene (Modular belts) (PBT on request)
- Working Load (at 25°C/77°F): 21600 N/m (1,480 lb/ft)
(for LW and DK materials)



Shoe guide position
Dedicated width:



Modular belt:



Belt material
see page 13



Sprockets and Idler
wheels see pages 224+227



Sprocket positioning
see pages 305+306

1600 (Solid top – 1" Pitch)

BELT NOMINAL WIDTH "W"	ACETAL RESIN (LW)				REGINA DK			BELT WEIGHT		
	mm	inches	WITHOUT GUIDE	WITH GUIDE G	WITH GUIDE G1	WITHOUT GUIDE	WITH GUIDE G	WITH GUIDE G1	kg/m	lbs/ft
85	3.35	1600A LW 0085	1600AG LW 0085		1600A DK 0085	1600AG DK 0085			0,67	0.45
170	6.69	1600B LW 0170	1600BG LW 0170	1600BG1 LW 0170	1600B DK 0170	1600BG DK 0170	1600BG1 DK 0170		1,29	0.87
255	10.04	1600B LW 0255	1600BG LW 0255	1600BG1 LW 0255	1600B DK 0255	1600BG DK 0255	1600BG1 DK 0255		1,93	1.30
340	13.39	1600B LW 0340	1600BG LW 0340	1600BG1 LW 0340	1600B DK 0340	1600BG DK 0340	1600BG1 DK 0340		2,57	1.73
425	16.73	1600B LW 0425	1600BG LW 0425	1600BG1 LW 0425	1600B DK 0425	1600BG DK 0425	1600BG1 DK 0425		3,20	2.15
510	20.08	1600B LW 0510	1600BG LW 0510	1600BG1 LW 0510	1600B DK 0510	1600BG DK 0510	1600BG1 DK 0510		3,84	2.58
595	23.43	1600B LW 0595	1600BG LW 0595	1600BG1 LW 0595	1600B DK 0595	1600BG DK 0595	1600BG1 DK 0595		4,47	3.00
680	26.77	1600B LW 0680	1600BG LW 0680	1600BG1 LW 0680	1600B DK 0680	1600BG DK 0680	1600BG1 DK 0680		5,11	3.43
765	30.12	1600B LW 0765	1600BG LW 0765	1600BG1 LW 0765	1600B DK 0765	1600BG DK 0765	1600BG1 DK 0765		5,75	3.86
850	33.46	1600B LW 0850	1600BG LW 0850	1600BG1 LW 0850	1600B DK 0850	1600BG DK 0850	1600BG1 DK 0850		6,38	4.29
935	36.81	1600B LW 0935	1600BG LW 0935	1600BG1 LW 0935	1600B DK 0935	1600BG DK 0935	1600BG1 DK 0935		7,02	4.72
1020	40.16	1600B LW 1020	1600BG LW 1020	1600BG1 LW 1020	1600B DK 1020	1600BG DK 1020	1600BG1 DK 1020		7,66	5.15
1105	43.50	1600B LW 1105	1600BG LW 1105	1600BG1 LW 1105	1600B DK 1105	1600BG DK 1105	1600BG1 DK 1105		8,29	5.57
1190	46.85	1600B LW 1190	1600BG LW 1190	1600BG1 LW 1190	1600B DK 1190	1600BG DK 1190	1600BG1 DK 1190		8,93	6.00
1275	50.20	1600B LW 1275	1600BG LW 1275	1600BG1 LW 1275	1600B DK 1275	1600BG DK 1275	1600BG1 DK 1275		9,56	6.43
1360	53.54	1600B LW 1360	1600BG LW 1360	1600BG1 LW 1360	1600B DK 1360	1600BG DK 1360	1600BG1 DK 1360		10,20	6.86
1445	56.89	1600B LW 1445	1600BG LW 1445	1600BG1 LW 1445	1600B DK 1445	1600BG DK 1445	1600BG1 DK 1445		10,84	7.29
1530	60.24	1600B LW 1530	1600BG LW 1530	1600BG1 LW 1530	1600B DK 1530	1600BG DK 1530	1600BG1 DK 1530		11,47	7.71

Belts wider than 1530 mm available (increments of 85 mm)

Example: 1530+85=1615 mm width, without guide Ref. (in LW material) 1600B LW 1615.

*Due to different shrinkage of materials, actual width is larger than the standard.

Standard length for belts up to a width of 680 mm: 3,048 m (10 feet).

Wider belts available in any requested length.



Matveyor®

1500 SERIES - 1" PITCH, FLUSH GRID

DEDICATED WIDTHS AND MODULAR BELTS

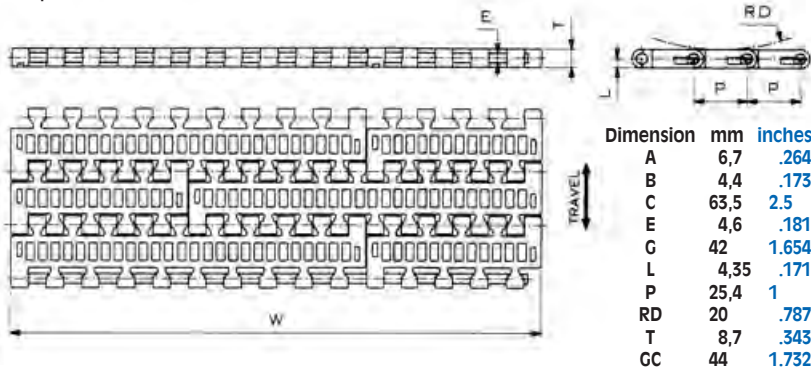
This belt has an excellent combination of open and support areas to allow drainage of liquids and good support of the conveyed products. This belt is particularly suitable for conveying of aluminium cans.



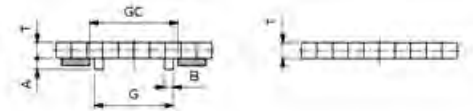
Products	Ref.	Standard Materials		
		LW	DK	*PP
Flush grid	1500			
Flush grid with guide	1500G			

on request

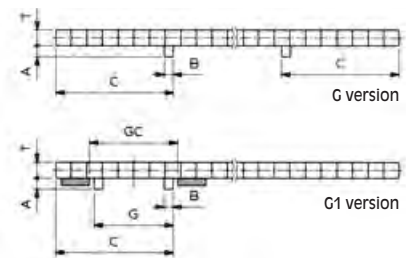
- Belt widths: 85 mm (3.346") or wider in 85 mm increments
82,6 mm (3.25") dedicated width also available
- Pin material: PBT (dedicated width)
PP- Polypropylene (Modular belts) (PBT on request)
- Working Load (at 25°C/77°F): 21600 N/m (1,480 lb/ft)
(for LW and DK materials)
- Open surface: 31%



Shoe guide position
Dedicated width:



Modular belt:



Belt material
see page 13



Sprockets and Idler
wheels see pages 224+227



Sprocket positioning
see pages 305+306

1500 (Flush grid – 1" Pitch)

BELT NOMINAL WIDTH "W"	ACETAL RESIN (LW)				REGINA DK			BELT WEIGHT		
	mm	inches	WITHOUT GUIDE	WITH GUIDE G	WITH GUIDE G1	WITHOUT GUIDE	WITH GUIDE G	WITH GUIDE G1	kg/m	lbs/ft
82,6	3.25	1500A LW K 3¼	1500AG LW K 3¼		1500A DK K 3¼	1500AG DK K 3¼			0,56	0.38
85	3.35	1500A LW 0085	1500AG LW 0085		1500A DK 0085	1500AG DK 0085			0,59	0.40
170	6.69	1500B LW 0170	1500BG LW 0170	1500BG1 LW 0170	1500B DK 0170	1500BG DK 0170	1500BG1 DK 0170		1,20	0.81
255	10.04	1500B LW 0255	1500BG LW 0255	1500BG1 LW 0255	1500B DK 0255	1500BG DK 0255	1500BG1 DK 0255		1,67	1.12
340	13.39	1500B LW 0340	1500BG LW 0340	1500BG1 LW 0340	1500B DK 0340	1500BG DK 0340	1500BG1 DK 0340		2,20	1.48
425	16.73	1500B LW 0425	1500BG LW 0425	1500BG1 LW 0425	1500B DK 0425	1500BG DK 0425	1500BG1 DK 0425		2,76	1.86
510	20.08	1500B LW 0510	1500BG LW 0510	1500BG1 LW 0510	1500B DK 0510	1500BG DK 0510	1500BG1 DK 0510		3,31	2.22
595	23.43	1500B LW 0595	1500BG LW 0595	1500BG1 LW 0595	1500B DK 0595	1500BG DK 0595	1500BG1 DK 0595		3,85	2.59
680	26.77	1500B LW 0680	1500BG LW 0680	1500BG1 LW 0680	1500B DK 0680	1500BG DK 0680	1500BG1 DK 0680		4,40	2.96
765	30.12	1500B LW 0765	1500BG LW 0765	1500BG1 LW 0765	1500B DK 0765	1500BG DK 0765	1500BG1 DK 0765		4,94	3.32
850	33.46	1500B LW 0850	1500BG LW 0850	1500BG1 LW 0850	1500B DK 0850	1500BG DK 0850	1500BG1 DK 0850		5,49	3.69
935	36.81	1500B LW 0935	1500BG LW 0935	1500BG1 LW 0935	1500B DK 0935	1500BG DK 0935	1500BG1 DK 0935		6,03	4.05
1020	40.16	1500B LW 1020	1500BG LW 1020	1500BG1 LW 1020	1500B DK 1020	1500BG DK 1020	1500BG1 DK 1020		6,58	4.42
1105	43.50	1500B LW 1105	1500BG LW 1105	1500BG1 LW 1105	1500B DK 1105	1500BG DK 1105	1500BG1 DK 1105		7,13	4.79
1190	46.85	1500B LW 1190	1500BG LW 1190	1500BG1 LW 1190	1500B DK 1190	1500BG DK 1190	1500BG1 DK 1190		7,67	5.16
1275	50.20	1500B LW 1275	1500BG LW 1275	1500BG1 LW 1275	1500B DK 1275	1500BG DK 1275	1500BG1 DK 1275		8,22	5.52
1360	53.54	1500B LW 1360	1500BG LW 1360	1500BG1 LW 1360	1500B DK 1360	1500BG DK 1360	1500BG1 DK 1360		8,76	5.89
1445	56.89	1500B LW 1445	1500BG LW 1445	1500BG1 LW 1445	1500B DK 1445	1500BG DK 1445	1500BG1 DK 1445		9,31	6.26
1530	60.24	1500B LW 1530	1500BG LW 1530	1500BG1 LW 1530	1500B DK 1530	1500BG DK 1530	1500BG1 DK 1530		9,86	6.63

Belts wider than 1530 mm available (increments of 85 mm)

Example: 1530+85=1615 mm width, without guide Ref. (in LW material) 1500B LW 1615.

*Due to different shrinkage of materials, actual width is larger than the standard.

Standard length for belts up to a width of 680 mm: 3,048 m (10 feet).

Wider belts available in any requested length.



783T, 782M AND 783M SERIES - 1" PITCH LIGHT DUTY

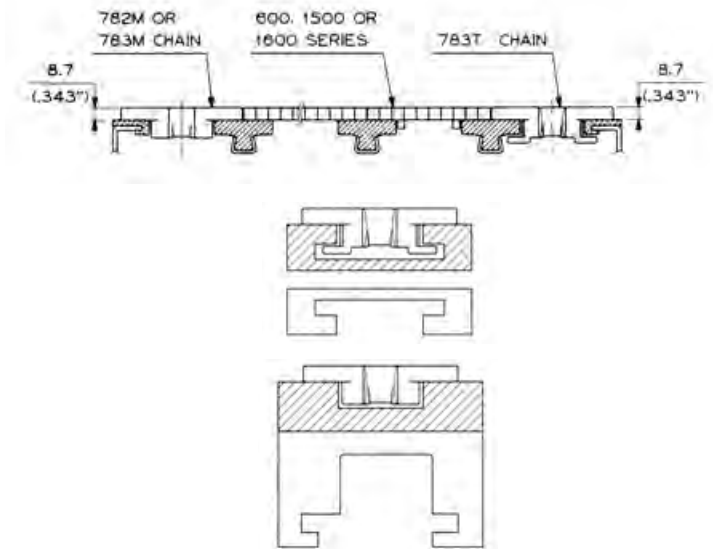
SIDEFLEXING CHAINS

Installation guidelines

Matveyor® sideflexing chains 783T, 782M and 783M can be used on conveyors side by side with Matveyor® belts 600 series and 1500/1600 series. Same thickness of 8,7mm for easy installation side by side and standardization of wear strips.

Tab chains 783T use the same curves as Flitetop® plastic chains 880T, 879T and Flitetop® steel chains 881T and 981T. (For tab curves see pag. 280)

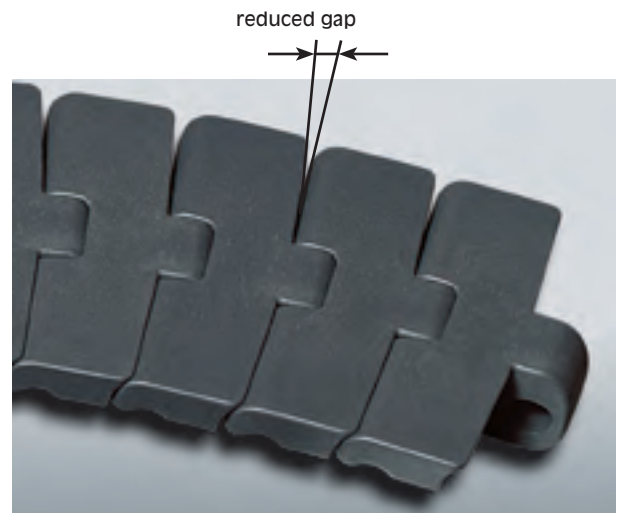
Magnetic chains 782M and 783M have no tab or bevel profile and have been designed to be installed on magnetic curves. (For magnetic curves see pag. 238)



Features and Benefits

Gentle product handling

The small 1" pitch top-plate combination results in a very low gap between flights. Availability of materials with extremely low friction coefficients (see page 13).



Standardization in conveyor construction

Easy installation side by side with Matveyor® belts.





Matveyor®

783T SERIES - 1" PITCH, SOLID TOP SIDEFLEXING TAB CHAINS

To be used in combination with 600 or 1600 series.

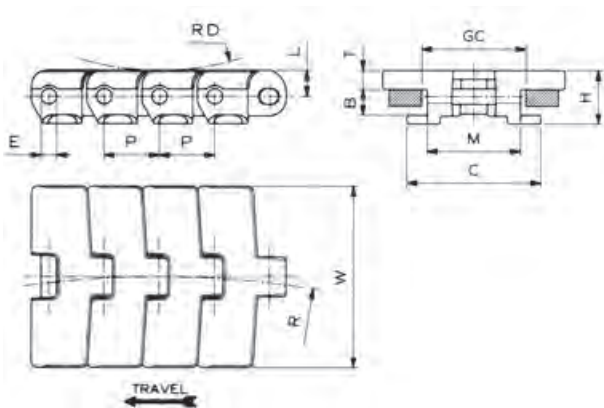
83,8 mm wide chains available for gap reduction on 85 mm transversal pitch conveyors.

783T SR series have reduced sideflexing radius.



Products	Ref.	Standard Materials	
		LW	DK
Solid top	783T		
Solid top, SR	783T SR		

Pin material: austenitic stainless steel



Dimension	mm	inches
P	25,4	1
B	11,9	.468
M	42,9	1.688
C	61,6	2.425
L	12	.472
H	24,6	.968
E	7,10	.279
RD	130	5.118
GC(straight)	46	1.811
GC (curve)	44,5	1.752

783T (Solid Top - Tab)



Chain material see page 13



Sprockets see page 228



Corner tracks see page 280



Sprocket positioning see page 308

MATERIAL	REGINA REF.	CHAIN WIDTH W		PLATE THICKNESS T		SIDEFLEXING RADIUS R		WORKING LOAD (25°C/77°F)		CHAIN WEIGHT	
		mm	inches	mm	inches	mm	inches	N	lbs	kg/m	lbs/ft
ACETAL RESIN (LW)	LW 783T K 3¼	82,6	3.25	8,7	0.34	457,2	18.00	1700	382	1,73	1.16
	LW 783T K 83,8	83,8	3.30	8,7	0.34	457,2	18.00	1700	382	1,76	1.18
	LW 783T K 4½	114,3	4.50	8,7	0.34	609,6	24.00	1700	382	1,99	1.33
REGINA DK	DK 783T K 3¼	82,6	3.25	8,7	0.34	457,2	18.00	1700	382	1,73	1.16
	DK 783T K 83,8	83,8	3.30	8,7	0.34	457,2	18.00	1700	382	1,69	1.18
	DK 783T K 4½	114,3	4.50	8,7	0.34	609,6	24.00	1700	382	1,69	1.33

Standard length: 3,048 m (10 feet)

NEW

783T SR (Solid Top - Tab - Reduced sideflexing Radius)



Chain material see page 13



Sprockets see page 228



Sprocket positioning see page 308

MATERIAL	REGINA REF.	CHAIN WIDTH W		PLATE THICKNESS T		SIDEFLEXING RADIUS R		WORKING LOAD (25°C/77°F)		CHAIN WEIGHT	
		mm	inches	mm	inches	mm	inches	N	lbs	kg/m	lbs/ft
ACETAL RESIN (LW)	LW 783T SR K 3¼	82,6	3.25	8,7	0.34	298,5	11.75	1700	382	1,73	1.16
REGINA DK	DK 783T SR K 3¼	82,6	3.25	8,7	0.34	298,5	11.75	1700	382	1,73	1.16

Standard length: 3,048 m (10 feet)



Matveyor®

782M AND 783M SERIES - 1" PITCH, FLUSH GRID AND SOLID TOP SIDEFLEXING MAGNETIC CHAINS

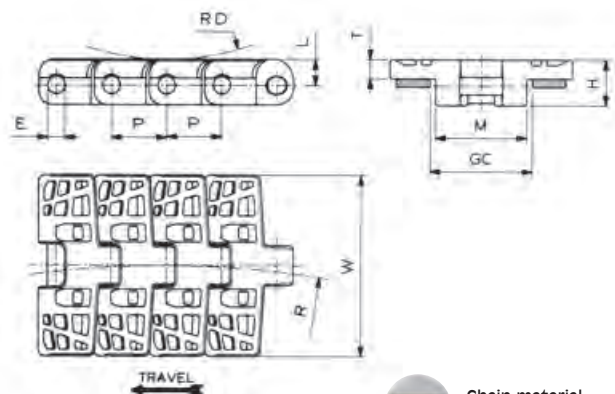
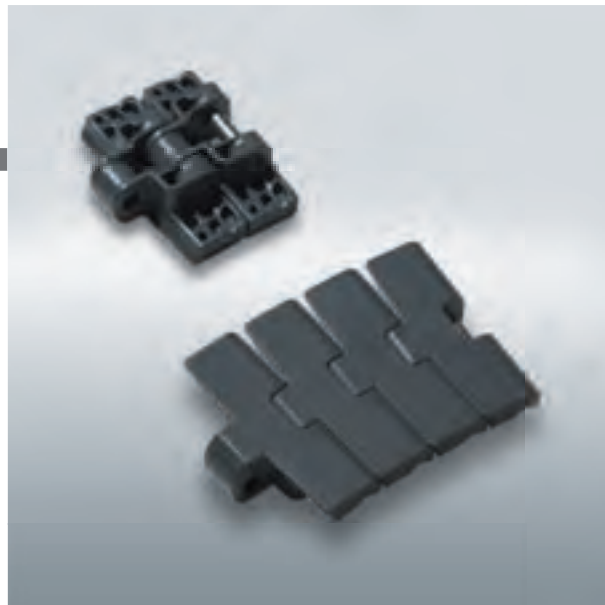
782M series can be used in combination with 1500 series.

783M series can be used in combination with 600 and 1600 series.

83,8 mm wide chains for gap reduction on 85 mm transversal pitch conveyors. Particularly suitable for inliners.

Products	Ref.	Standard Materials	
		LW	DK
Flush grid	782M		
Solid top	783M		

Pin material: magnetic stainless steel



Dimension	mm	inches
P	25,4	1
M	42	1.654
L	12	.472
H	21	.827
E	8	.315
RD	120	4.724
GC(straight)	44	1.732
GC (curve)	44	1.732

782M (Flush grid - Magnetic)



Chain material see page 13



Sprockets and Idler wheels see page 228



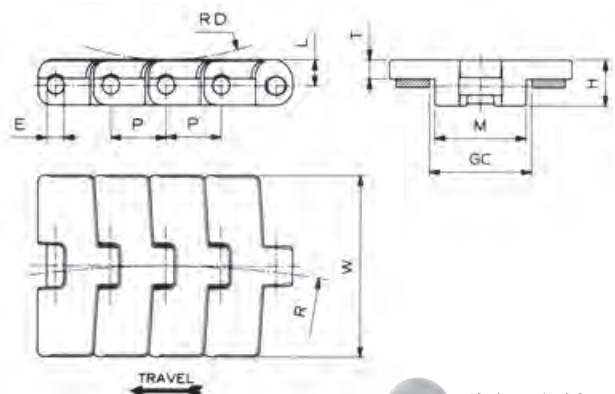
Corner tracks see page 241



Sprocket positioning see page 308

MATERIAL	REGINA REF.	CHAIN WIDTH W		PLATE THICKNESS T		SIDEFLEXING RADIUS R		WORKING LOAD (25°C/77°F)		CHAIN WEIGHT	
		mm	inches	mm	inches	mm	inches	N	lbs	kg/m	lbs/ft
ACETAL RESIN (LW)	LW 782M K 83,8	83,8	3.30	8,7	0.34	500	19.68	1700	382	1,69	1.13
REGINA DK	DK 782M K 83,8	83,8	3.30	8,7	0.34	500	19.68	1700	382	1,69	1.13

Standard length: 3,048 m (10 feet)



Dimension	mm	inches
P	25,4	1
M	42	1.654
L	12	.472
H	21	.827
E	8	.315
RD	120	4.724
GC(straight)	44	1.732
GC (curve)	44	1.732

783M (Solid Top - Magnetic)



Chain material see page 13



Sprockets and Idler wheels see page 228



Corner tracks see page 241



Sprocket positioning see page 308

MATERIAL	REGINA REF.	CHAIN WIDTH W		PLATE THICKNESS T		SIDEFLEXING RADIUS R		WORKING LOAD (25°C/77°F)		CHAIN WEIGHT	
		mm	inches	mm	inches	mm	inches	N	lbs	kg/m	lbs/ft
ACETAL RESIN (LW)	LW 783M K 83,8	83,8	3.30	8,7	0.34	500	19.68	1700	382	1,82	1.22
REGINA DK	DK 783M K 83,8	83,8	3.30	8,7	0.34	500	19.68	1700	382	1,82	1.22

Standard length: 3,048 m (10 feet)



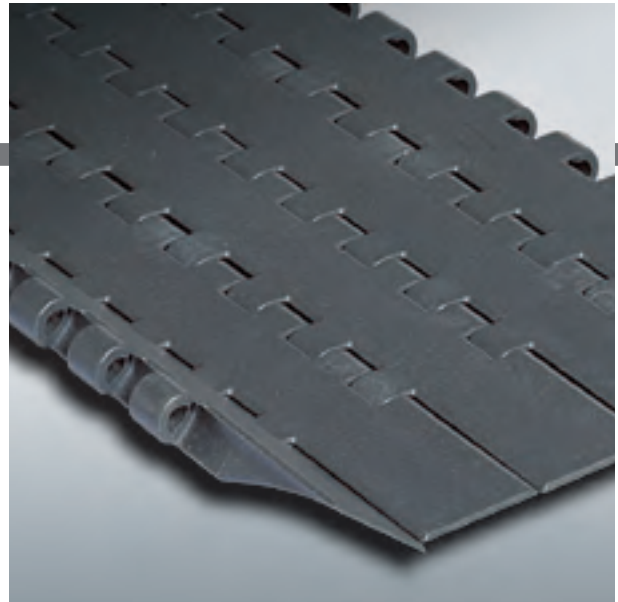
Matveyor®

NEW

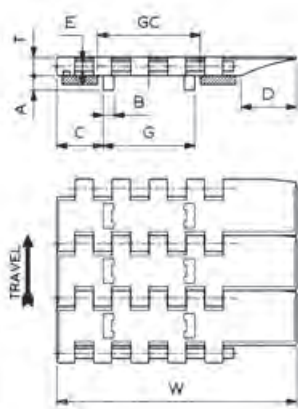
1600 SERIES - 1" PITCH, SOLID TOP

ACTIVE TRANSFER MODULES

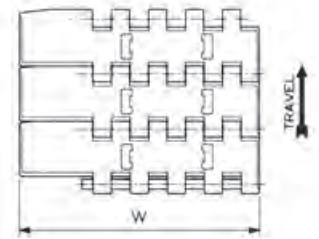
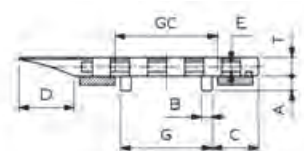
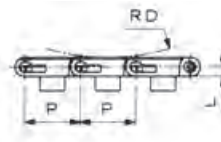
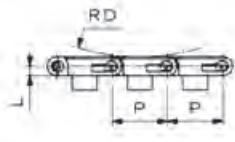
1600GATM can be used in combination with 1600 Modular belts. Active transfer modules 1600GATM allow the transfer of products between two 90° conveyor tracks without using dead plates. The special wing shaped module profile supports the products dynamically during transfer on the take-away belt. Available left and right version.



Products	Ref.	Standard Materials		
		LW	DK	*PP
Solid top with guide	1600GATM			
Pin material: PP - Polypropylene				on request



Right Version



Left Version

Dimension	mm	inches
A	6,7	.264
B	4,9	.193
C	21,3	.839
D	25,4	1
E	4,6	.181
G	42	1.654
L	4,35	.171
P	25,4	1
RD	20	.787
GC	44	1.732

1600GATM (Solid top - Right Version)



Chain material see page 13



Sprockets and Idler wheels see pages 224+227



Sprocket positioning see pages 305-307

MATERIAL	REGINA REF.	CHAIN WIDTH W		PLATE THICKNESS T		WORKING LOAD (25°C/77°F)		CHAIN WEIGHT	
		mm	inches	mm	inches	N	lbs	kg/m	lbs/ft
ACETAL RESIN (LW)	1600BGATM LW 0085 DX	110	4.33	8,7	0.34	1840	415	0,84	0.56
	1600BGATM LW 0170 DX	195	7.68	8,7	0.34	3670	825	1,51	1.01
REGINA DK	1600BGATM DK 0085 DX	110	4.33	8,7	0.34	1840	415	0,84	0.56
	1600BGATM DK 0170 DX	195	7.68	8,7	0.34	3670	825	1,51	1.51

Standard length: 3,048 m (10 feet)

1600GATM (Solid top - Left Version)



Chain material see page 13



Sprockets and Idler wheels see pages 224+227



Sprocket positioning see pages 305-307

MATERIAL	REGINA REF.	CHAIN WIDTH W		PLATE THICKNESS T		WORKING LOAD (25°C/77°F)		CHAIN WEIGHT	
		mm	inches	mm	inches	N	lbs	kg/m	lbs/ft
ACETAL RESIN (LW)	1600BGATM LW 0085 SX	110	4.33	8,7	0.34	1840	415	0,84	0.56
REGINA DK	1600BGATM DK 0085 SX	110	4.33	8,7	0.34	1840	415	0,84	0.56

*Due to different shrinkage of materials, actual width is larger than the standard.

Standard length: 3,048 m (10 feet)



Matveyor®

1500 SERIES - 1" PITCH, FLUSH GRID

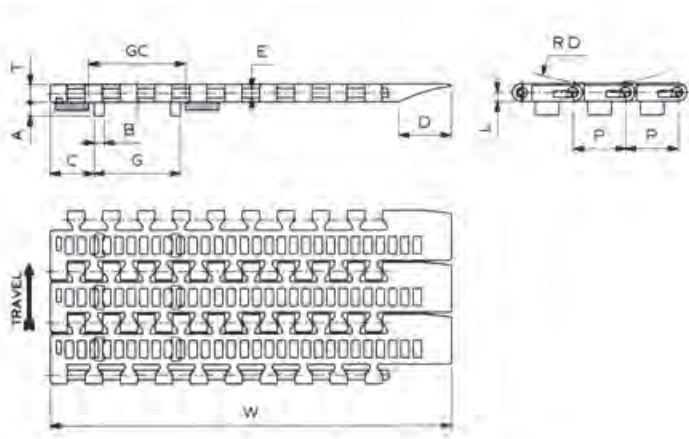
ACTIVE TRANSFER MODULES

1500GATM can be used in combination with 1500 Modular belts series. Active transfer modules 1500GATM allow the transfer of products between two 90° conveyor tracks without using dead plates. The special wing shaped module profile supports the products dynamically during transfer on the take-away belt. This system is particularly suitable for aluminium cans.



Products	Ref.	Standard Materials		
		LW	DK	*PP
Flush grid with guide	1500GATM			

Pin material: PP - Polypropylene on request



Dimension	mm	inches
A	6,7	.264
B	4,9	.193
C	21,3	.839
D	25,4	1
E	4,6	.181
G	42	1.654
L	4,35	.171
P	25,4	1
RD	20	.787
GC	44	1.732

1500GATM (Flush grid – Right Version)



Chain material see page 13



Sprockets and Idler wheels see pages 224+227



Sprocket positioning see pages 305-307

MATERIAL	REGINA REF.	CHAIN WIDTH W		PLATE THICKNESS T		WORKING LOAD (25°C/77°F)		CHAIN WEIGHT	
		mm	inches	mm	inches	N	lbs	kg/m	lbs/ft
ACETAL RESIN (LW)	1500BGATM LW 0170 DX	195	7.68	8,7	0.34	3670	825	1,21	0.81
REGINA DK	1500BGATM DK 0170 DX	195	7.68	8,7	0.34	3670	825	1,21	0.81

*Due to different shrinkage of materials, actual width is larger than the standard.

Standard length: 3,048 m (10 feet)



RR1600 SERIES - 1" PITCH, LIGHT DUTY, RAISED RIB

DEDICATED WIDTHS

Application

- Packaging machines

Installation guidelines

RR 1600 dedicated widths are used in combination with combs for the head transfer of the products.
Different widths (30 mm, 38,5 mm, 47 mm and 58 mm), combs and sprockets are available for the maximum flexibility in conveyor lay-out definition.
See page 289 for the recommended sprocket/comb matching.



Benefits

The "Z" rib design offers the maximum support to the conveyed products, even near the module's edge.

Ideal support for unstable products



Easy assembly and disassembly

Retention clips can easily be moved from the side of the belt for assembling and disassembling.
Only a small movement is required, the clip remains in the module.



Reliable drive

The accurate tooth profile with a large cross section ensures high drive capacity and long wear life of sprockets and modules.
The central pocket makes these belts bidirectional.



Matveyor®

NEW

RR1600 SERIES - 1" PITCH, RAISED RIB

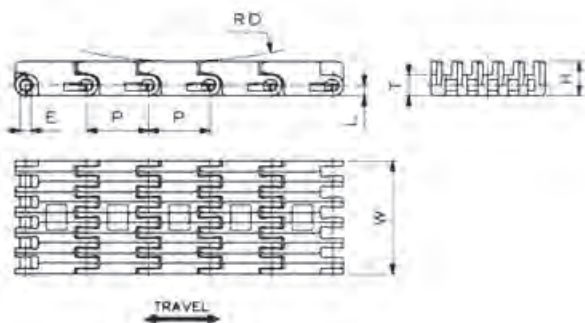
DEDICATED WIDTHS

The ideal ratio rib thickness/spacing offers high support even for the most unstable products, such as PET bottles with petaloid bottom, cans, 3-piece cans. Optimum liquid drainage and good mechanical strength.



Products	Ref.	Standard Materials	
		UP	*PP
Raised Rib	RR1600		

Pin material: PBT



Dimension	mm	inches
E	4,6	.181
H	14,3	.562
L	4,35	.171
P	25,4	1
RD	240	9.448

RR1600 (Raised Rib – 1" Pitch)



Chain material
see page 13



Sprockets see
pages 224÷227



Sprocket positioning
see pages 305÷306



Combs see
pages 288

MATERIAL	REGINA REF.	CHAIN WIDTH W		PLATE THICKNESS T		WORKING LOAD (25°C/77°F)		CHAIN WEIGHT	
		mm	inches	mm	inches	N	lbs	kg/m	lbs/ft
ULTRA PERFORMANCE ACETAL RESIN (UP)	RR1600A UP K 30	30	1.17	8,7	0.34	700	162	0,39	0.26
	RR1600A UP K 38,5	38,5	1.50	8,7	0.34	950	219	0,50	0.36
	RR1600A UP K 47	47	1.83	8,7	0.34	1150	265	0,60	0.40
	RR1600A UP K 58	58	2.26	8,7	0.34	1400	323	0,75	0.50
POLYPROPYLENE* (PP)	RR1600A PP K 30	30	1.17	8,7	0.34	315	73	0,27	0.18
	RR1600A PP K 38,5	38,5	1.50	8,7	0.34	415	96	0,33	0.22
	RR1600A PP K 47	47	1.83	8,7	0.34	500	115	0,40	0.27
	RR1600A PP K 58	58	2.26	8,7	0.34	650	150	0,49	0.33

*Due to different shrinkage of materials, actual width is larger than the standard.

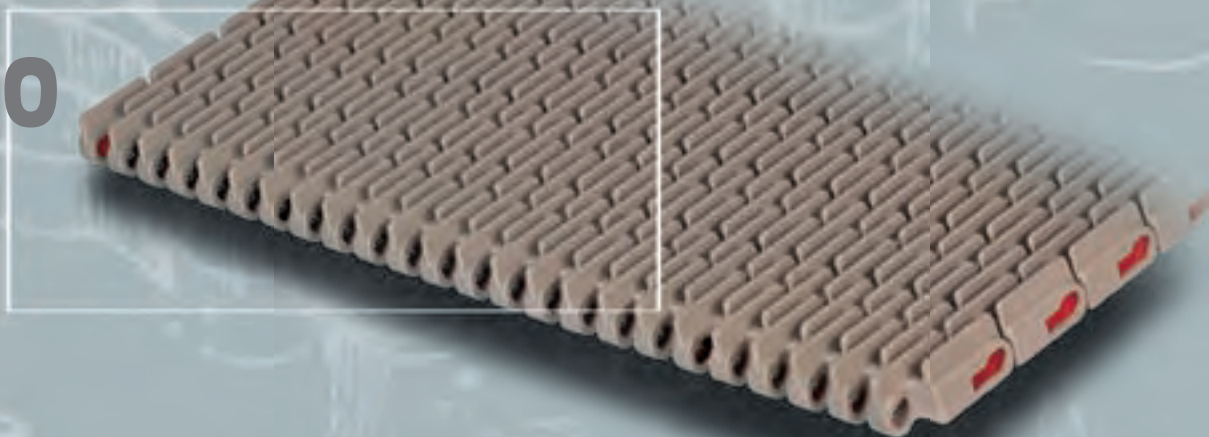
Standard length: 3,048 m (10 feet)



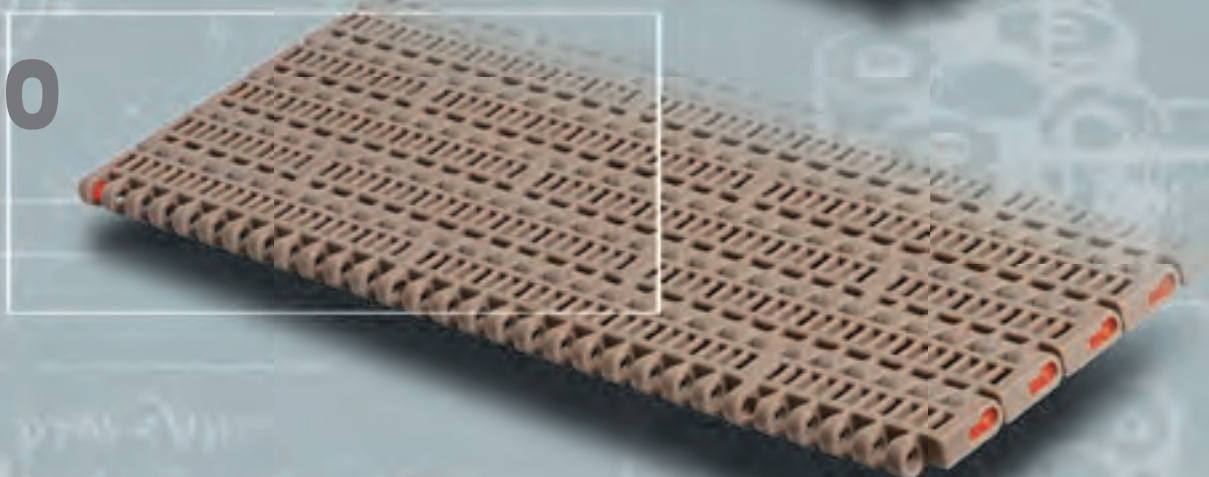
Matveyor®

Light duty - American standard

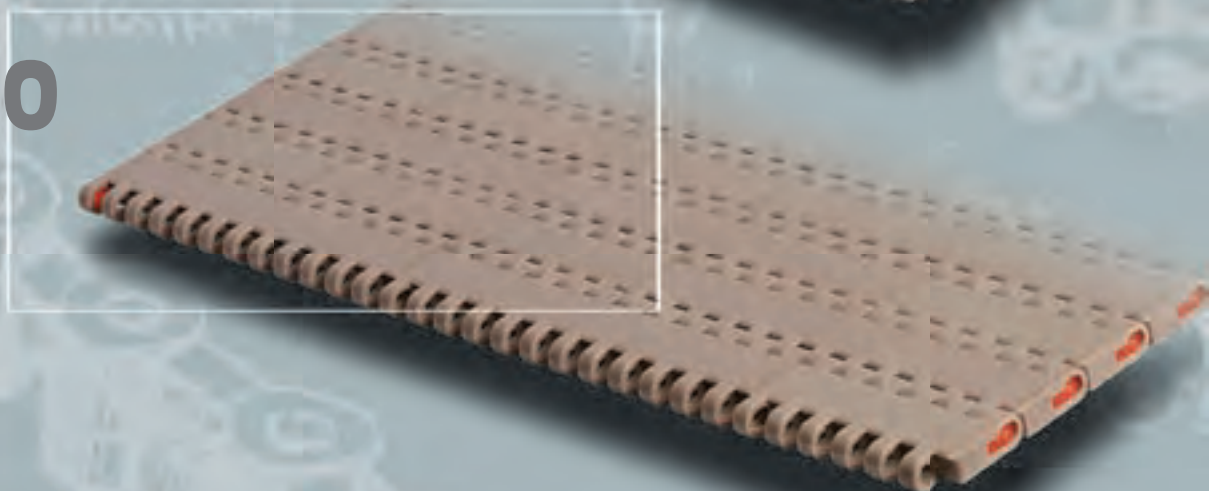
1110



1210



1310





1110, 1210 AND 1310 SERIES - 1" PITCH, LIGHT DUTY

MODULAR PLASTIC BELTS

American standard

These belts are ideal for depalletizing, palletizing and mass flow conveying in food, beverage and packaging applications. Due to their high mechanical strength and large sliding area they also offer the best performance in applications with high product loads and a long center to center distance.

Features and Benefits

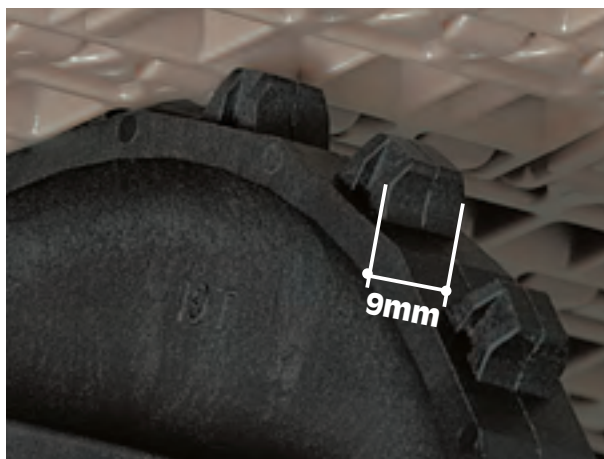
High mechanical strength

The high mechanical strength and transversal stiffness of these belts make them suitable for the most critical applications (high product loads and long center to center distance).



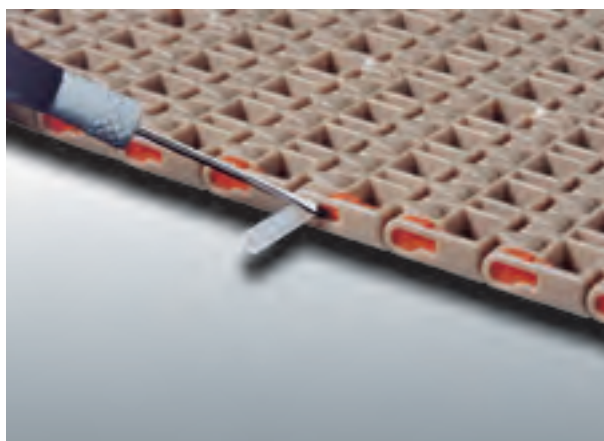
Reliable drive

The accurate tooth profile with high cross section ensures high drive capacity and long wear life of sprockets and modules. The central pocket makes these belts bidirectional.



Easy assembly and disassembly

Retention clips can easily be moved from the side of the belt for assembling and disassembling. The clip remains located in the module.

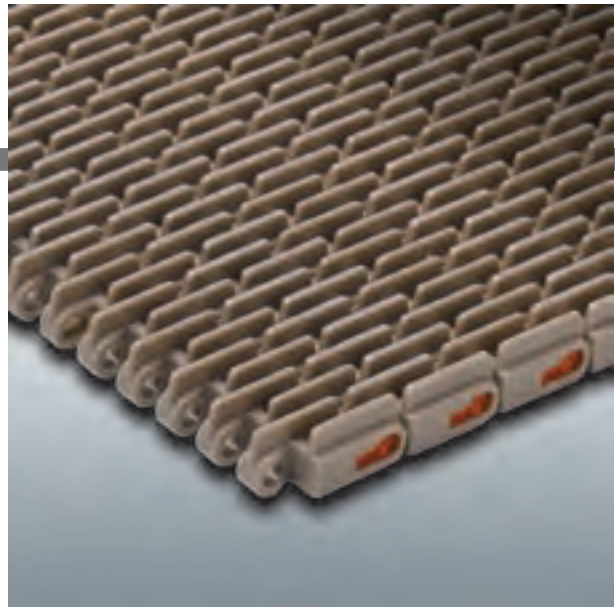




Matveyor®

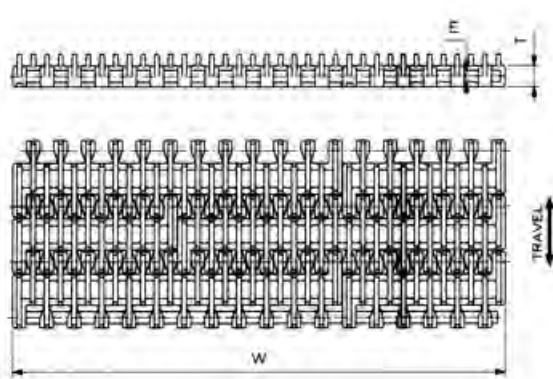
1110 SERIES - 1" PITCH, RAISED RIB MODULAR BELTS

This belt allows the head transfer of the products by using transfer combs and has a open area to permit liquid drainage and belt cleaning. Particularly suitable for product infeed of packaging machines.



Products	Ref.	Standard Materials	
		LW	*PP
Raised rib	1110		

Belt widths: 152,4 mm (6") or wider in 76,2 mm (3") increments
 - Pin material: PP- Polypropylene
 - Working Load (at 25°C/77°F): 21580 N/m (1,480 lb/ft) (for LW material)
 10920 N/m (748 lb/ft) (for PP material)
 - Open Surface: 30%



Dimension	mm	inches
E	5,4	.212
H	15	.591
L	4,8	.189
P	25,4	1
RD	80	3.15
T	9,6	.378

1110 (Raised Rib – 1"Pitch)



Belt material
see page 13



Sprockets see
pages 224-227



Sprocket positioning
see page 309



Combs see
pages 290

BELT NOMINAL WIDTH "W"		ACETAL RESIN (LW)		BELT WEIGHT		POLYPROPYLENE* PP		BELT WEIGHT	
mm	inches	REGINA REF.		kg/m	lbs/ft	REGINA REF.		kg/m	lbs/ft
152,4	6	1110 LW 006		1,33	0.89	1110 PP 006		0,90	0.60
228,6	9	1110 LW 009		2,00	1.34	1110 PP 009		1,35	0.91
304,8	12	1110 LW 012		2,65	1.78	1110 PP 012		1,78	1.20
381,0	15	1110 LW 015		3,30	2.22	1110 PP 015		2,22	1.49
457,2	18	1110 LW 018		3,95	2.65	1110 PP 018		2,66	1.79
533,4	21	1110 LW 021		4,61	3.10	1110 PP 021		3,10	2.08
609,6	24	1110 LW 024		5,26	3.54	1110 PP 024		3,54	2.38
685,8	27	1110 LW 027		5,91	3.97	1110 PP 027		3,98	2.68
762,0	30	1110 LW 030		6,57	4.42	1110 PP 030		4,42	2.97
838,2	33	1110 LW 033		7,22	4.85	1110 PP 033		4,86	3.27
914,4	36	1110 LW 036		7,87	5.29	1110 PP 036		5,30	3.56
990,6	39	1110 LW 039		8,53	5.73	1110 PP 039		5,74	3.86
1066,8	42	1110 LW 042		9,18	6.17	1110 PP 042		6,17	4.15
1143,0	45	1110 LW 045		9,83	6.61	1110 PP 045		6,61	4.44
1219,2	48	1110 LW 048		10,50	7.06	1110 PP 048		7,06	4.75
1295,4	51	1110 LW 051		11,14	7.49	1110 PP 051		7,49	5.03
1371,6	54	1110 LW 054		11,79	7.92	1110 PP 054		7,93	5.33
1447,8	57	1110 LW 057		12,45	8.37	1110 PP 057		8,37	5.63
1524,0	60	1110 LW 060		13,10	8.80	1110 PP 060		8,81	5.92

Belts wider than 1524mm (60") available, with increments of 76,2mm (3").

Example: 60 + 3 = 63 inches Ref. (in LW material) 1110 LW 063.

*Due to different shrinkage of materials, actual width is larger than the standard.

Belts available in the requested length.

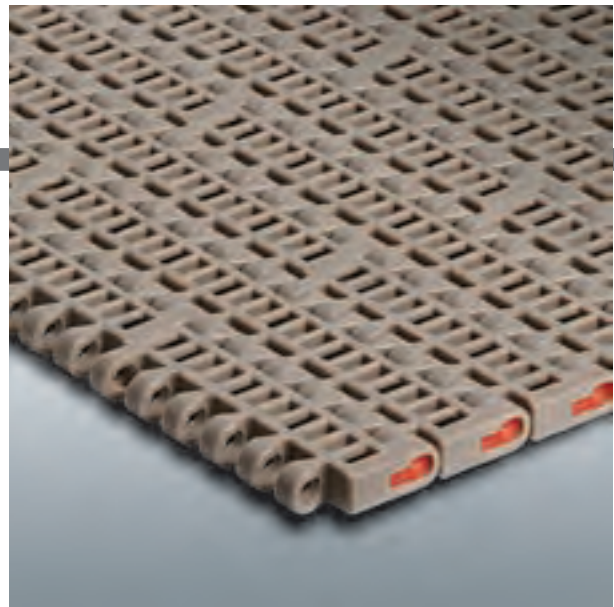


Matveyor®

1210 SERIES - 1" PITCH, FLUSH GRID

MODULAR BELTS

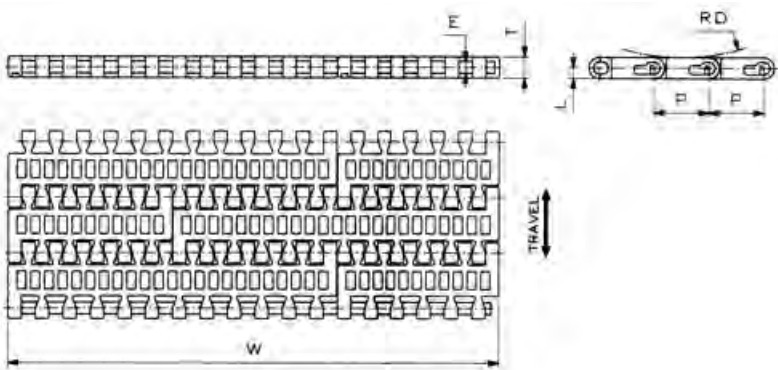
This belt has an open surface area to permit drainage of liquid, sanitation and cooling or warming of products. Particularly suitable for conveying aluminium cans.



Products	Ref.	Standard Materials		
		LW	*PP	DK
Flush grid	1210			

on request

- Belt widths: 152,4 mm (6") or wider in 76,2 mm (3") increments
- Pin material: PP- Polypropylene
- Working Load (at 25°C/77°F): 21580 N/m (1,480 lb/ft) (for LW material)
10920 N/m (748 lb/ft) (for PP material)
- Open Surface: 30%



Dimension	mm	inches
E	5,4	.212
L	4,8	.189
P	25,4	1
RD	20	.787
T	9,6	.378

1210 (Flush Grid – 1" Pitch)



Belt material see page 13



Sprockets see pages 224÷227



Sprocket positioning see page 309

BELT NOMINAL WIDTH "W"		ACETAL RESIN (LW)		BELT WEIGHT		POLYPROPYLENE* PP		BELT WEIGHT	
		REGINA REF.		kg/m	lbs/ft	REGINA REF.		kg/m	lbs/ft
mm	inches								
152,4	6	1210 LW 006	1,06	0.71	1210 PP 006	0,72	0.48		
228,6	9	1210 LW 009	1,58	1.06	1210 PP 009	1,07	0.72		
304,8	12	1210 LW 012	2,10	1.41	1210 PP 012	1,42	0.95		
381,0	15	1210 LW 015	2,62	1.76	1210 PP 015	1,77	1.19		
457,2	18	1210 LW 018	3,14	2.11	1210 PP 018	2,12	1.42		
533,4	21	1210 LW 021	3,65	2.45	1210 PP 021	2,46	1.65		
609,6	24	1210 LW 024	4,17	2.80	1210 PP 024	2,81	1.89		
685,8	27	1210 LW 027	4,69	3.15	1210 PP 027	3,16	2.12		
762,0	30	1210 LW 030	5,31	3.57	1210 PP 030	3,51	2.36		
838,2	33	1210 LW 033	5,72	3.84	1210 PP 033	3,86	2.59		
914,4	36	1210 LW 036	6,24	4.19	1210 PP 036	4,21	2.83		
990,6	39	1210 LW 039	6,76	4.54	1210 PP 039	4,55	3.06		
1066,8	42	1210 LW 042	7,28	4.89	1210 PP 042	4,90	3.29		
1143,0	45	1210 LW 045	7,80	5.24	1210 PP 045	5,25	3.53		
1219,2	48	1210 LW 048	8,32	5.59	1210 PP 048	5,61	3.77		
1295,4	51	1210 LW 051	8,83	5.93	1210 PP 051	5,95	4.00		
1371,6	54	1210 LW 054	9,35	6.28	1210 PP 054	6,30	4.23		
1447,8	57	1210 LW 057	9,87	6.63	1210 PP 057	6,64	4.46		
1524,0	60	1210 LW 060	10,38	6.98	1210 PP 060	7,00	4.70		

Belts wider than 1524 mm (60") available, with increments of 76,2 mm (3").

Example: 60 + 3 = 63 inches Ref. (in LW material) 1210 LW 063.

*Due to different shrinkage of materials, actual width is larger than the standard.

Belts available in the requested length.



Matveyor®

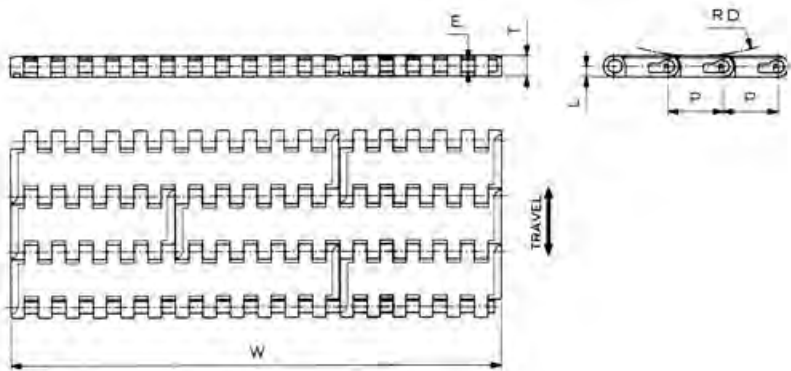
1310 SERIES - 1" PITCH, SOLID TOP MODULAR BELTS

This belt offers a smooth surface to provide excellent support and minimize product tippage. It is particularly suitable for small sized products and unstable containers (for example PET bottles with petaloid bottom, glass bottles and products of small diameter).



Products	Ref.	Standard Materials			
		LW	*PP	DK	*AS
Solid Top	1310				
			on request	on request	on request

Belt widths: 152,4 mm (6") or wider in 76,2 mm (3") increments
 - Pin material: PP- Polypropylene
 - Working Load (at 25°C/77°F): 21580 N/m (1.480 lb/ft) (for LW material)
 10920 N/m (748 lb/ft) (for PP material)



Dimension	mm	inches
E	5,4	.212
L	4,8	.189
P	25,4	1
RD	20	.787
T	9,6	.378

1310 (Solid Top – 1" Pitch)



Belt material see page 13



Sprockets see pages 224-227



Sprocket positioning see page 309

BELT NOMINAL WIDTH "W"		ACETAL RESIN (LW)		BELT WEIGHT		POLYPROPYLENE* PP		BELT WEIGHT	
		REGINA REF.		kg/m	lbs/ft	REGINA REF.		kg/m	lbs/ft
mm	inches								
152,4	6	1310 LW 006	1,18	0.79	1310 PP 006	0,80	0.54		
228,6	9	1310 LW 009	1,77	1.19	1310 PP 009	1,19	0.80		
304,8	12	1310 LW 012	2,35	1.58	1310 PP 012	1,58	1.06		
381,0	15	1310 LW 015	2,92	1.96	1310 PP 015	1,97	1.32		
457,2	18	1310 LW 018	3,50	2.35	1310 PP 018	2,36	1.59		
533,4	21	1310 LW 021	4,08	2.74	1310 PP 021	2,74	1.84		
609,6	24	1310 LW 024	4,66	3.13	1310 PP 024	3,13	2.10		
685,8	27	1310 LW 027	5,24	3.52	1310 PP 027	3,52	2.37		
762,0	30	1310 LW 030	5,82	3.91	1310 PP 030	3,91	2.63		
838,2	33	1310 LW 033	6,40	4.30	1310 PP 033	4,30	2.89		
914,4	36	1310 LW 036	6,98	4.69	1310 PP 036	4,68	3.15		
990,6	39	1310 LW 039	7,55	5.07	1310 PP 039	5,07	3.41		
1066,8	42	1310 LW 042	8,13	5.46	1310 PP 042	5,46	3.67		
1143,0	45	1310 LW 045	8,71	5.85	1310 PP 045	5,85	3.93		
1219,2	48	1310 LW 048	9,30	6.25	1310 PP 048	6,24	4.19		
1295,4	51	1310 LW 051	9,87	6.63	1310 PP 051	6,62	4.45		
1371,6	54	1310 LW 054	10,45	7.02	1310 PP 054	7,00	4.70		
1447,8	57	1310 LW 057	11,03	7.41	1310 PP 057	7,40	4.97		
1524,0	60	1310 LW 060	11,60	7.80	1310 PP 060	7,78	5.23		

Belts wider than 1524 mm (60") available, with increments of 76,2 mm (3").

Example: 60 + 3 = 63 inches Ref. (in LW material) 1310 LW 063.

*Due to different shrinkage of materials, actual width is larger than the standard.

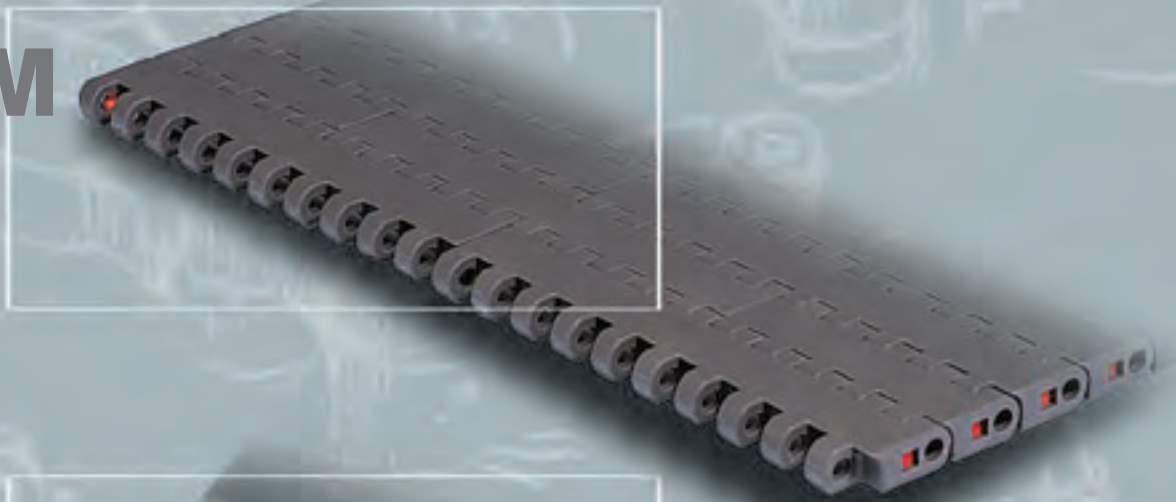
Belts available in the requested length.



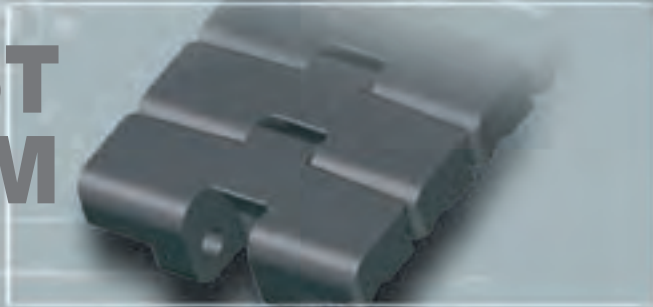
Matveyor®

Heavy duty - Metric standard

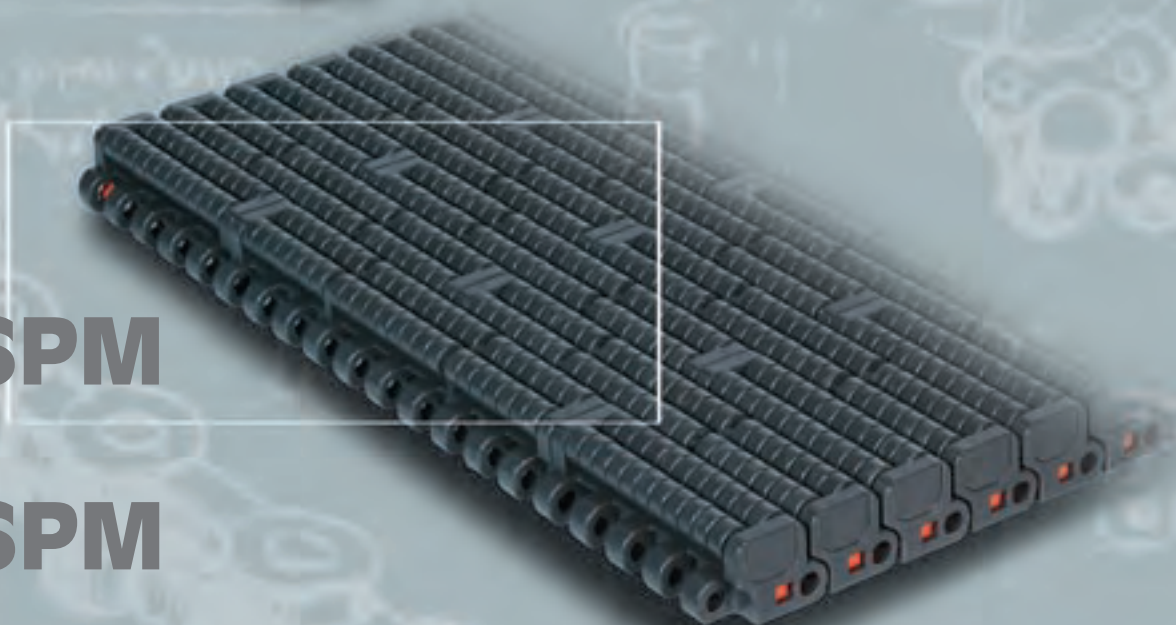
USPM



**793T
793M**



LPB USPM



HF USPM



USPM SERIES - 1" PITCH, HEAVY DUTY

MODULAR PLASTIC BELTS - METRIC STANDARD

Installation guidelines

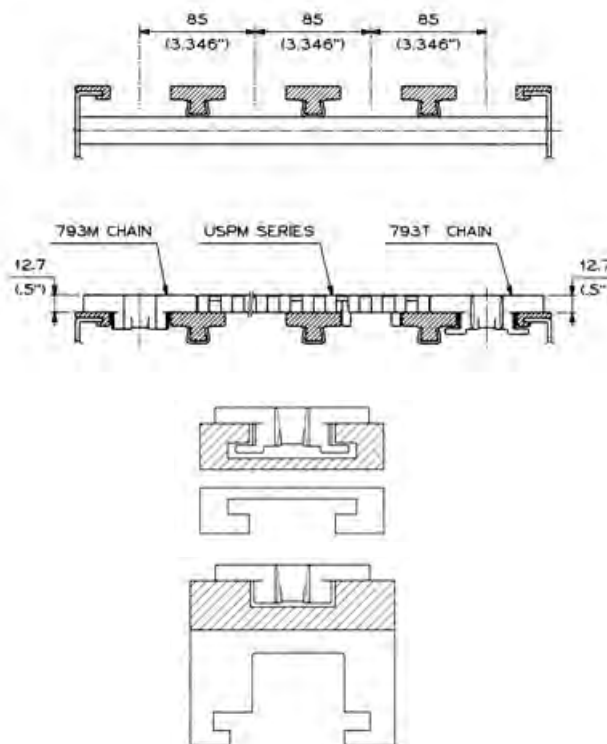
Widths and guides are designed for installation on conveyors with 85 mm between parallel tracks and 44 mm clearance between the wear strips.

USPM series can be used together with magnetic or tab sideflexing chains 793 series (see page 141). Same thickness of 12,7 mm for easy installation side by side and standardization of wear strips.

Tab chains 793T use the same curves as Flitetop® plastic chains 880T, 879T and Flitetop® steel chains 881T and 981T. (For tab curves see pag. 280)

Magnetic chains 793M have no tab or bevel profile and have been designed to be installed on magnetic curves. (For magnetic curves see pag. 238).

For 90° products transfer, also availability of ATM (Active Transfer Modules) series (see pag. 144)

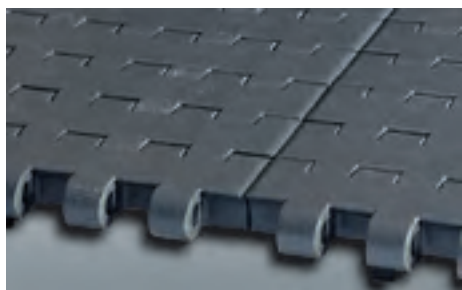


Features and Benefits



Large bottom sliding surface

The extremely large contact surface reduces the specific pressure with the wear strips and consequently the wear of the belt bottom surface (limited reduction in thickness).



Smooth and uniform surface

The surface near the edge of the modules, which is critical for the side transfer of the product, is uniform, with no discontinuities. The side transfer of the products is not disturbed.



Easy assembly and disassembly

Retention clips can easily be moved from the side of the belt for assembling and disassembling. Only a small movement is required, the clip remains located in the module.



Matveyor®

USPM SERIES - 1" PITCH, SOLID TOP DEDICATED WIDTHS

The extremely good flatness, manufacturing accuracy, low coefficient of friction, make the side transfer of the products very easy. Completely closed surface, no gap between the modules, even when engaging on the sprockets.

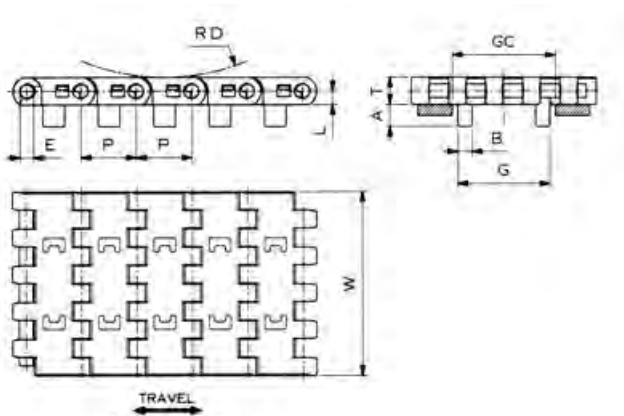
Particularly suitable for glass products, small sized products and unstable containers (for example PET bottles with petaloid base).

83,8 mm wide chains for gap reduction on 85 mm transversal pitch conveyors. Particularly suitable for inliners.



Products	Ref.	Standard Materials	
		UP	DK
Solid top with guide	USPMG		

Pin material: PBT



Dimension	mm	inches
A	10	.394
B	6,5	.256
E	6,26	.246
G	42,2	1.661
L	6,35	.25
P	25,4	1
RD	25	.984
GC	44	1.732

USPM (Solid top - 1" Pitch)



Chain material
see page 13



Sprockets and Idler
wheels see pages 229-231



Sprocket positioning
see pages 310-311

MATERIAL	REGINA REF.	CHAIN WIDTH W		PLATE THICKNESS T		WORKING LOAD (25°C/77°F)		CHAIN WEIGHT	
		mm	inches	mm	inches	N	lbs	kg/m	lbs/ft
ULTRA PERFORMANCE ACETAL RESIN (UP)	USPMG UP K 83,8	83,8	3.30	12,7	0.50	2975	670	1,21	0.81
REGINA DK	USPMG DK K 83,8	83,8	3.30	12,7	0.50	2975	670	1,21	0.81

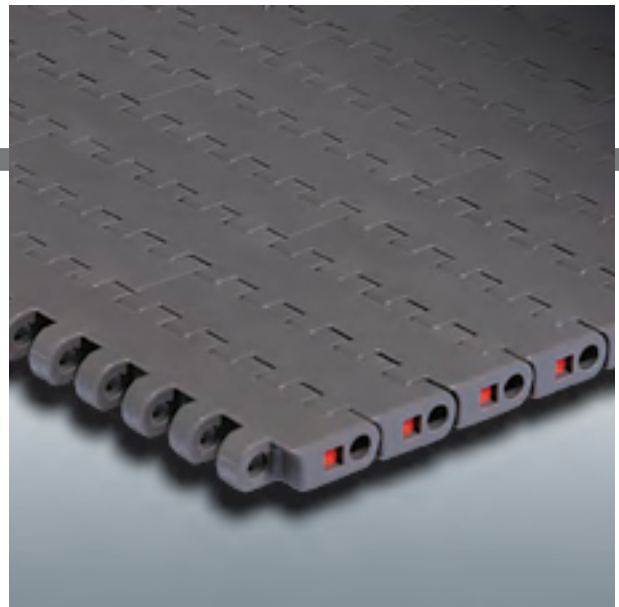
Standard length: 3,048 m (10 feet)



Matveyor®

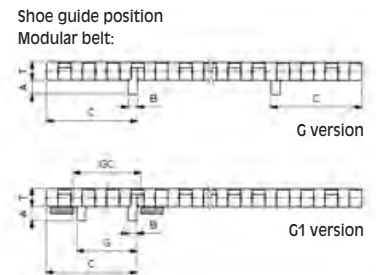
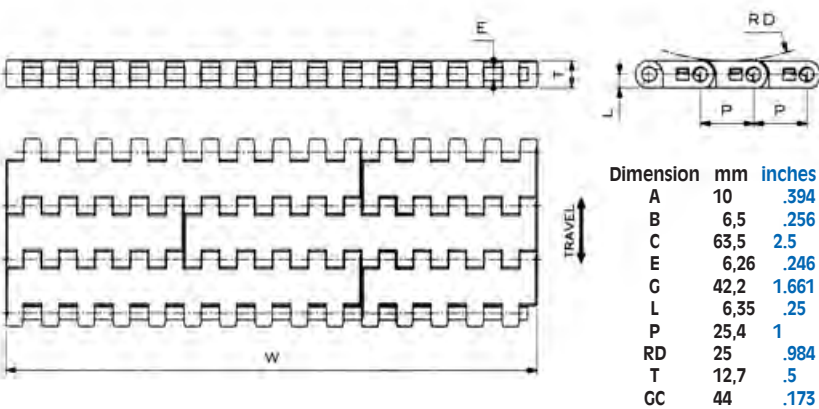
USPM SERIES - 1" PITCH, SOLID TOP MODULAR BELTS

Extremely good flatness, manufacturing accuracy and low coefficient of friction make the side transfer of the products very easy. Completely closed surface, no gap between the modules, even when engaging on the sprockets. Particularly suitable for glass products, small sized products and unstable containers (for example PET bottles with petaloid base).



Products	Ref.	Standard Materials	
		UP	DK
Solid top	USPM		
Solid top with guide	USPMG		

Belt widths: 170 mm (6.693") or wider in 85 mm increments
 - Pin material: PBT
 - Working Load (at 25°C/77°F): 35000 N/m (2,400 lb/ft)



USPM (Solid top - 1" Pitch)



Belt material
see page 13



Sprockets and Idler
wheels see pages 229+231



Sprocket positioning
see pages 310+311

BELT NOMINAL WIDTH "W"	ACETAL RESIN (UP)				REGINA DK			BELT WEIGHT	
	REGINA REF.				REGINA REF.			kg/m	lbs/ft
	mm	inches	WITHOUT GUIDE	WITH GUIDE G	WITH GUIDE G1	WITHOUT GUIDE	WITH GUIDE G		
170	6.69	USPM UP 0170	USPMG UP 0170	USPMG1 UP 0170	USPM DK 0170	USPMG DK 0170	USPMG1 DK 0170	2,34	1.57
255	10.04	USPM UP 0255	USPMG UP 0255	USPMG1 UP 0255	USPM DK 0255	USPMG DK 0255	USPMG1 DK 0255	3,49	2.35
340	13.39	USPM UP 0340	USPMG UP 0340	USPMG1 UP 0340	USPM DK 0340	USPMG DK 0340	USPMG1 DK 0340	4,64	3.12
425	16.73	USPM UP 0425	USPMG UP 0425	USPMG1 UP 0425	USPM DK 0425	USPMG DK 0425	USPMG1 DK 0425	5,78	3.88
510	20.08	USPM UP 0510	USPMG UP 0510	USPMG1 UP 0510	USPM DK 0510	USPMG DK 0510	USPMG1 DK 0510	6,92	4.65
595	23.43	USPM UP 0595	USPMG UP 0595	USPMG1 UP 0595	USPM DK 0595	USPMG DK 0595	USPMG1 DK 0595	8,07	5.42
680	26.77	USPM UP 0680	USPMG UP 0680	USPMG1 UP 0680	USPM DK 0680	USPMG DK 0680	USPMG1 DK 0680	9,21	6.19
765	30.12	USPM UP 0765	USPMG UP 0765	USPMG1 UP 0765	USPM DK 0765	USPMG DK 0765	USPMG1 DK 0765	10,36	6.96
850	33.46	USPM UP 0850	USPMG UP 0850	USPMG1 UP 0850	USPM DK 0850	USPMG DK 0850	USPMG1 DK 0850	11,51	7.74
935	36.81	USPM UP 0935	USPMG UP 0935	USPMG1 UP 0935	USPM DK 0935	USPMG DK 0935	USPMG1 DK 0935	12,65	8.50
1020	40.16	USPM UP 1020	USPMG UP 1020	USPMG1 UP 1020	USPM DK 1020	USPMG DK 1020	USPMG1 DK 1020	13,80	9.28
1105	43.50	USPM UP 1105	USPMG UP 1105	USPMG1 UP 1105	USPM DK 1105	USPMG DK 1105	USPMG1 DK 1105	14,94	10.04
1190	46.85	USPM UP 1190	USPMG UP 1190	USPMG1 UP 1190	USPM DK 1190	USPMG DK 1190	USPMG1 DK 1190	16,08	10.81
1275	50.20	USPM UP 1275	USPMG UP 1275	USPMG1 UP 1275	USPM DK 1275	USPMG DK 1275	USPMG1 DK 1275	17,23	11.58
1360	53.54	USPM UP 1360	USPMG UP 1360	USPMG1 UP 1360	USPM DK 1360	USPMG DK 1360	USPMG1 DK 1360	18,37	12.35
1445	56.89	USPM UP 1445	USPMG UP 1445	USPMG1 UP 1445	USPM DK 1445	USPMG DK 1445	USPMG1 DK 1445	19,52	13.12
1530	60.24	USPM UP 1530	USPMG UP 1530	USPMG1 UP 1530	USPM DK 1530	USPMG DK 1530	USPMG1 DK 1530	20,66	13.89

Belts wider than 1530 mm available (increments of 85 mm)

Example: 1530+85=1615 mm width, without guide Ref. (in DK material) USPM DK 1615.

Standard length for belts up to a width of 680 mm: 3,048 m (10 feet).

Wider belts available in any requested length.



793T AND 793M SERIES - 1" PITCH, HEAVY DUTY

SIDEFLEXING CHAINS

Installation guidelines

Matveyor® sideflexing chain 793T and 793M can be used on conveyors side by side with ULTOP® UCC and Matveyor® USP and USPM series. Same thickness of 12,7mm for easy installation side by side and standardization of wear strips.

Tab chains 793T use the same curves as Flitetop® plastic chains 880T, 879T and Flitetop® steel chains 881T and 981T. (for TAB curves see pag. 280)

Magnetic chains 793M have no tab or bevel profile and have been designed to be installed on magnetic curves. (For magnetic curves see pag. 238)

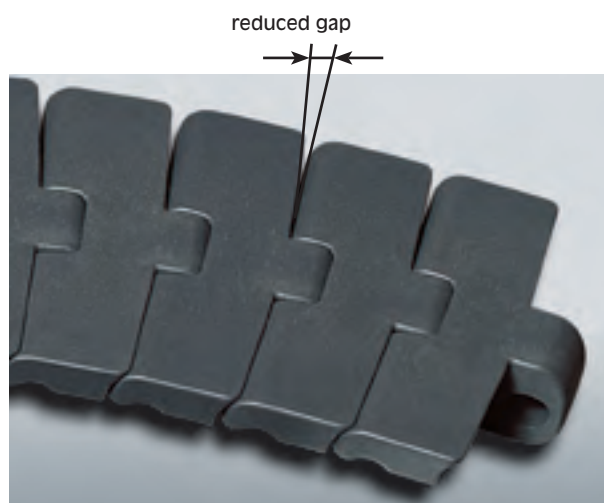
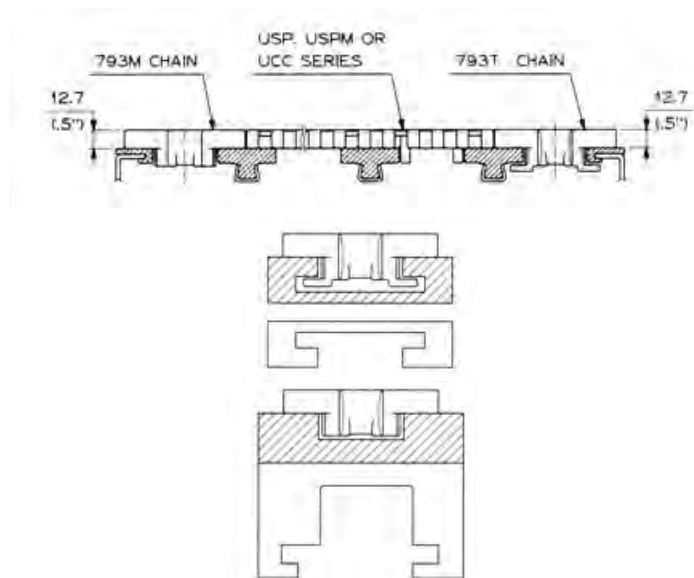
Features and Benefits

Gentle product handling

The small 1" pitch top-plate combination results in a very low gap between flights. Availability of materials with extremely low friction coefficients (see pag. 13).

Standardization in conveyor construction

Easy installation side by side with Matveyor® and Ultop® belts.





Matveyor®

793T SERIES - 1" PITCH, SOLID TOP SIDEFLEXING TAB CHAINS

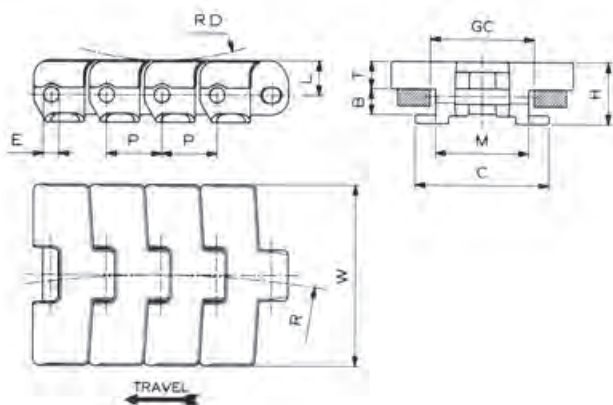
To be used in combination with USPM, USP and UCC series.

83,8 mm wide chains available for gap reduction on 85 mm transversal pitch conveyors. Particularly suitable for inliners.



Products	Ref.	Standard Materials	
		UP	DK
Solid top	793T	 	

Pin material: austenitic stainless steel



Dimension	mm	inches
P	25,4	1
B	11,9	.468
M	42,9	1.688
C	61,6	2.425
L	16	.629
H	28,6	1.125
E	7,10	.279
RD	130	5.118
GC(straight)	46	1.811
GC (curve)	44,5	1.752

793T (Solid Top - Tab)



Chain material
see page 13



Sprockets see
page 228



Corner tracks
see page 280



Sprocket positioning
see page 308

MATERIAL	REGINA REF.	CHAIN WIDTH W		PLATE THICKNESS T		SIDEFLEXING RADIUS R		WORKING LOAD (25°C/77°F)		CHAIN WEIGHT	
		mm	inches	mm	inches	mm	inches	N	lbs	kg/m	lbs/ft
ULTRA PERFORMANCE ACETAL RESIN (UP)	UP 793T K 3¼	82,6	3.25	12,7	0.50	457,2	18	2200	494.5	2,05	1.37
	UP 793T K 83,8	83,8	3.30	12,7	0.50	457,2	18	2200	494.5	2,08	1.39
	UP 793T K 4½	114,3	4.50	12,7	0.03	609,6	24	2200	494.5	2,45	1.64
REGINA DK	DK 793T K 3¼	82,6	3.25	12,7	0.50	457,2	18	2200	494.5	2,05	1.37
	DK 793T K 83,8	83,8	3.30	12,7	0.50	457,2	18	2200	494.5	2,08	1.39
	DK 793T K 4½	114,3	4.50	12,7	0.50	609,6	24	2200	494.5	2,45	1.64

Standard length: 3,048 m (10 feet)

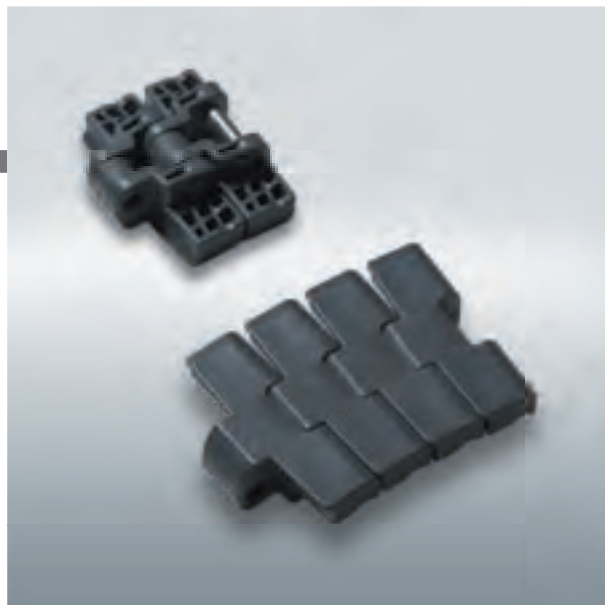


Matveyor®

793M SERIES - 1" PITCH, SOLID TOP SIDEFLEXING MAGNETIC CHAINS

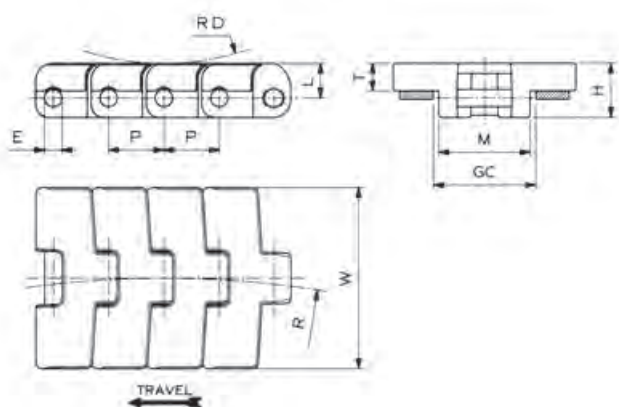
To be used in combination with USPM, USP and UCC series.

83,8 mm wide chain available for gap reduction on 85 mm transversal pitch conveyors. Particularly suitable for inliners



Products	Ref.	Standard Materials	
		UP	DK
Solid top	793M		

Pin material: magnetic stainless steel



Dimension	mm	inches
P	25,4	1
M	42	1.654
L	16	.63
H	25	.984
E	8	.315
RD	130	5.118
GC(straight)	44	1.732
GC (curve)	44	1.732

793M (Solid Top - Magnetic)



Chain material
see page 13



Sprockets and Idler
wheels see page 228



Corner tracks
see page 241



Sprocket positioning
see page 308

MATERIAL	REGINA REF.	CHAIN WIDTH W		PLATE THICKNESS T		SIDEFLEXING RADIUS R		WORKING LOAD (25°C/77°F)		CHAIN WEIGHT	
		mm	inches	mm	inches	mm	inches	N	lbs	kg/m	lbs/ft
ULTRA PERFORMANCE ACETAL RESIN (UP)	UP 793M K 83,8	83,8	3.30	12,7	0.50	457,2	18	2200	494.5	2,07	1.39
REGINA DK	DK 793M K 83,8	83,8	3.30	12,7	0.50	457,2	18	2200	494.5	2,07	1.39

Standard length: 3,048 m (10 feet)

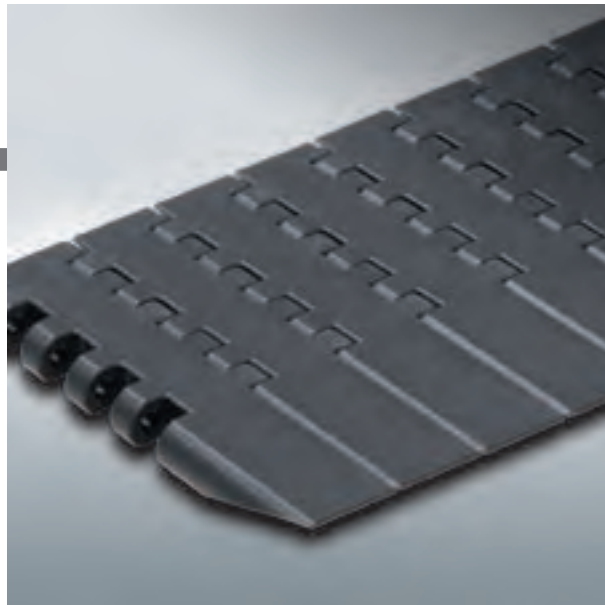


Matveyor®

USPM SERIES - 1" PITCH, SOLID TOP

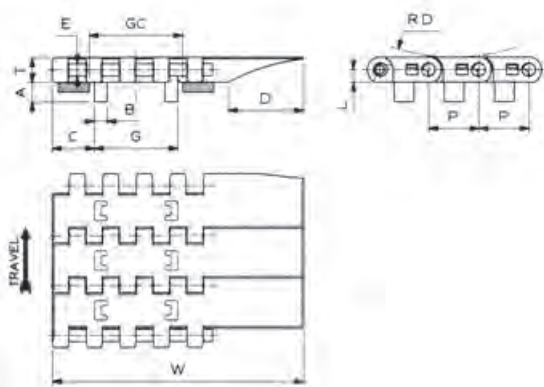
ACTIVE TRANSFER MODULES

To be used in combination with USPM belts series.
 Active transfer modules USPMGATM series allow the transfer of the products between two 90° conveyor tracks without using dead plates.
 The special module profile, wing shaped, supports the products dynamically during transfer on the take-away belt.
 Available left and right version.



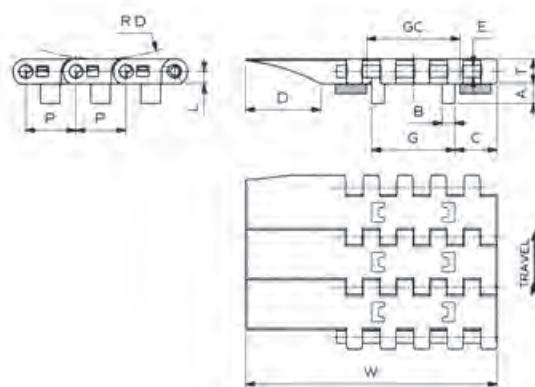
Products	Ref.	Standard Materials	
		UP	DK
Solid top with guide	USPMGATM		

Pin material: PBT



Right version

Dimension	mm	inches
A	10	.394
B	6,5	.256
C	21,3	.839
D	38,1	1.5
E	6,26	.246
G	42,2	1.661
L	6,35	.25
P	25,4	1
RD	25	.984
GC	44	1.732



Left version

USPMGATM (Solid top - Right Version)



Chains material
see page 13



Sprockets and Idler
wheel see pages 229÷231



Sprocket positioning
see pages 310-313

MATERIAL	REGINA REF.	CHAIN WIDTH W		PLATE THICKNESS T		WORKING LOAD (25°C/77°F)		CHAIN WEIGHT	
		mm	inches	mm	inches	N	lbs	kg/m	lbs/ft
ULTRA PERFORMANCE ACETAL RESIN (UP)	USPMGATM UP 0085 DX	127,5	5.02	12,7	0.50	2975	670	1,54	1.03
REGINA DK	USPMGATM DK 0085 DX	127,5	5.02	12,7	0.50	2975	670	1,54	1.03

Standard length: 3,048 m (10 feet)

NEW

USPMGATM (Solid top - Left Version)



Chains material
see page 13



Sprockets and Idler
wheel see pages 229÷231



Sprocket positioning
see pages 310-313

MATERIAL	REGINA REF.	CHAIN WIDTH W		PLATE THICKNESS T		WORKING LOAD (25°C/77°F)		CHAIN WEIGHT	
		mm	inches	mm	inches	N	lbs	kg/m	lbs/ft
ULTRA PERFORMANCE ACETAL RESIN (UP)	USPMGATM UP 0085 SX	127,5	5.02	12,7	0.50	2975	670	1,54	1.03
REGINA DK	USPMGATM DK 0085 SX	127,5	5.02	12,7	0.50	2975	670	1,54	1.03

Standard length: 3,048 m (10 feet)



LBP USPM SERIES - 1" PITCH, HEAVY DUTY WITH ROLLERS

MODULAR PLASTIC BELTS

Applications

Food and beverage industry packaging line (PET bottle packs in heat shrink film).

Paper and cardboard boxes.

General purpose conveying applications with problems of back-line pressure between products.

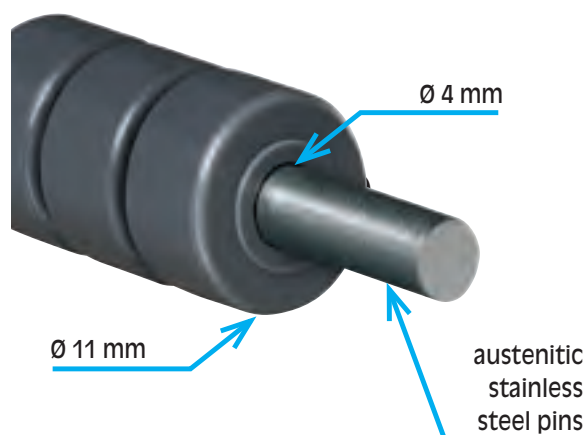
Features and materials

LBP Modular Belts are based on USPM series (see page 138). Modules are made by DuPont™ Delrin® special dark grey acetal resin, for good wear resistance and mechanical strength. Rollers made of specifically designed thermoplastic resin.



Benefits

- It is possible to build wide accumulation tables with rollers over the entire width, due to 85 mm width increments
- High ratio outside/inside roller diameter: better rotation capability, lower coefficient of friction in combination with low noise.
- Self cleaning roller profile (barrel shaped).





Matveyor®

LBP USPM SERIES 1" PITCH, WITH LBP ROLLERS

DEDICATED WIDTHS AND MODULAR BELTS

Suitable for applications where a large accumulating conveyor section is needed.

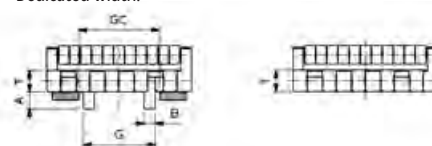


Products	Ref.	Standard Materials DG
LBP	LBP USPM	
LBP with guide	LBP USPMG1	

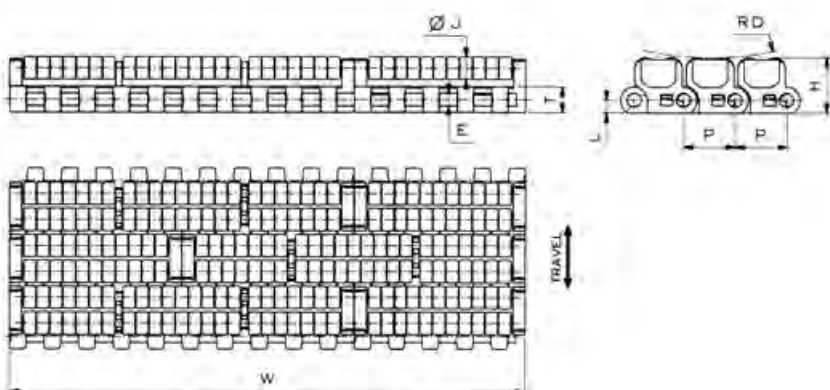
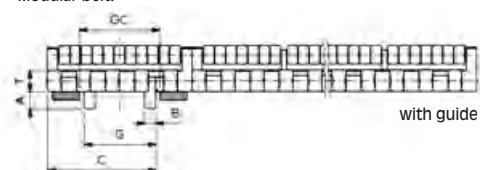
Belt widths: 85 mm (3.346") or wider in 85 mm (3.346") increments

- Pin material: PBT
- Roller material: Low friction and low noise acetal resin
- Working Load (at 25°C/77°F): 35000 N/m (2,400 lb/ft)

Shoe guide position
Dedicated width:



Modular belt:



Dimension	mm	inches
A	10	.394
B	6,5	.256
C	63,5	2.5
E	6,26	.246
G	42,2	1.661
H	27,2	1.071
J	11	.433
L	6,35	.25
P	25,4	1
RD	230	9.055
T	12,7	.5
GC	44	1.732

LBP USPM (1" Pitch)



Belt material
see page 13



Sprockets and Idler
wheel see pages 229-231



Sprocket positioning
see pages 310-312

BELT NOMINAL WIDTH "W"		ACETAL RESIN (DG) REGINA REF.		BELT WEIGHT	
mm	inches	WITHOUT GUIDE	WITH GUIDE	kg/m	lbs/ft
85	3.35	LBP USPM DG 0085	LBP USPMG1 DG 0085	2,73	1.83
170	6.69	LBP USPM DG 0170	LBP USPMG1 DG 0170	5,34	3.59
255	10.04	LBP USPM DG 0255	LBP USPMG1 DG 0255	7,90	5.31
340	13.39	LBP USPM DG 0340	LBP USPMG1 DG 0340	10,56	7.10
425	16.73	LBP USPM DG 0425	LBP USPMG1 DG 0425	13,22	8.89
510	20.08	LBP USPM DG 0510	LBP USPMG1 DG 0510	15,78	10.61
595	23.43	LBP USPM DG 0595	LBP USPMG1 DG 0595	18,38	12.35
680	26.77	LBP USPM DG 0680	LBP USPMG1 DG 0680	20,98	14.10

Belts wider than 680 mm available (increments of 85 mm).

Example: 680 + 85 = 765 mm width, without guide Ref. (in DG material) LBP USPM DG 0765

Standard length for belts up to a width of 425 mm: 1,524 m (60 pitches).

Wider belts available in any requested length.



HF USPM SERIES - 1" PITCH, HEAVY DUTY WITH RUBBER SURFACE

MODULAR PLASTIC BELTS

Applications

Packaging lines (cardboard, shrink packs).
Paper and cardboard boxes.
General conveying on inclined conveyors.

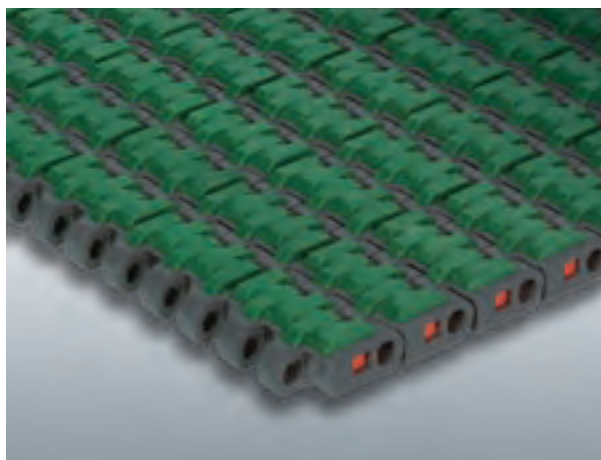
Features and materials

HF Modular Belts are based on USPM series (see pag. 138).

Modules are available in:

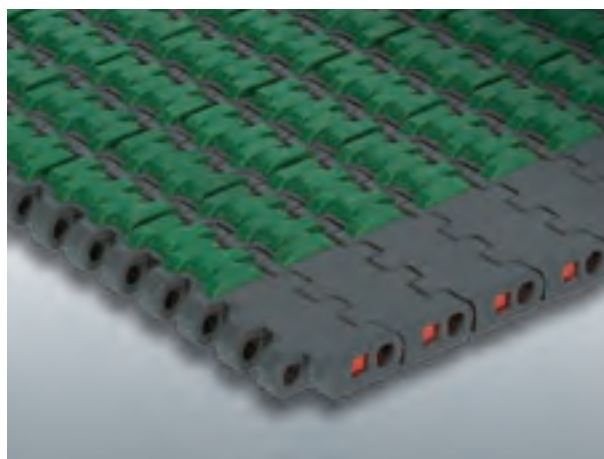
- UP - DuPont™ Delrin® special acetal resin.
- High friction surface is thermoplastic rubber (see table below).

On request it is possible to provide belts rubberized on steps (even) or in accordance with the design of the customer.



Benefits

- Available either full rubberized or side indent (to allow a return on straight guides without interferences with rubberized portion).
- Outstanding rubber retention (Patent Pending).
- Excellent and reliable rubber grip.
- Large sliding surface for extended wear life.
- Wide sprocket tooth for reliable drive and extended life.
- The maximum angle of the ramp is a function of type, shape and material of the product to be conveyed. Please contact Regina Application Engineers for a more detailed evaluation. Temperature and other environmental conditions can influence maximum value of the incline.



RUBBER MATERIAL	COLOUR	AVERAGE HARDNESS	NON SUITABLE WITH	RESISTANT TO
THERMOPLASTIC	GREEN	80 ShA	STRONG ACIDS AND BASES	OILS



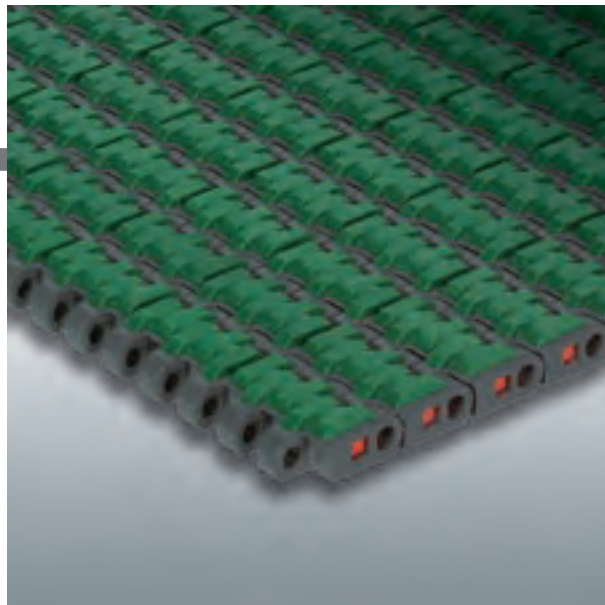
Matveyor®

NEW

HF USPM SERIES 1" PITCH, RUBBER SURFACE, FULL COVER

DEDICATED WIDTHS AND MODULAR BELTS

HF USPM belts are a ideal solution for heavy duty inclines, declines and package handling (acceleration, deceleration, rotation).

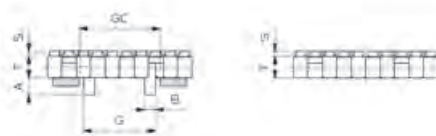


Products	Ref.	Standard Materials UP
Full Cover	HF USPM	
Full Cover with Guide	HF USPMG1	

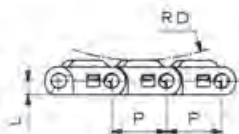
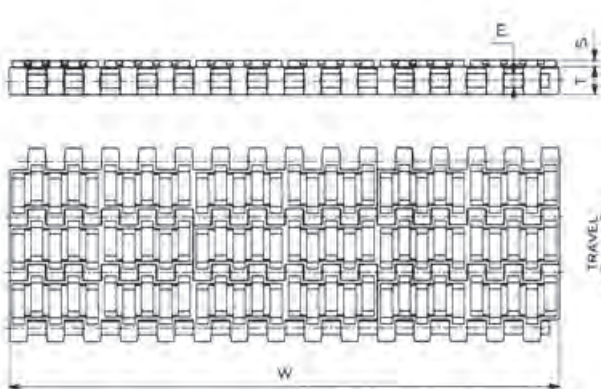
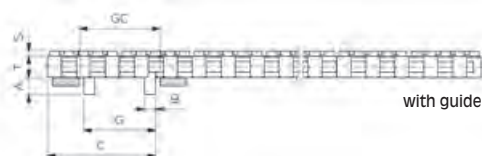
Belt widths: 170 mm (6.69") or wider in 85 mm (3.35") increments

- Pin material: PBT
- Rubber material: Thermoplastic
- Rubber hardness: 80 ShA (see page 147)
- Working Load (at 25°C/77°F): 35000 N/m (2,400 lb/ft)

Shoe guide position
Dedicated width:



Modular belt:



Dimension	mm	inches
A	10	.394
B	6,5	.256
C	63,5	2.5
E	6,26	.246
G	42,2	1.661
L	6,35	.25
P	25,4	1
RD	25	.984
S	3	.118
T	12,7	.5
GC	44	1.732

HF USPM (Full cover – 1" Pitch)



Belt material
see page 13



Sprockets and Idler
wheel see pages 229÷231



Sprocket positioning
see pages 310÷311

BELT NOMINAL WIDTH "W"		ACETAL RESIN (UP)		BELT WEIGHT	
mm	inches	WITHOUT GUIDE	WITH GUIDE	kg/m	lbs/ft
85	3.35	HF USPM UP 0085	HF USPMG1 UP 0085	1,33	0.89
170	6.69	HF USPM UP 0170	HF USPMG1 UP 0170	2,67	1.79
255	10.04	HF USPM UP 0255	HF USPMG1 UP 0255	3,93	2.64
340	13.39	HF USPM UP 0340	HF USPMG1 UP 0340	5,23	3.52
425	16.73	HF USPM UP 0425	HF USPMG1 UP 0425	6,53	4.39
510	20.08	HF USPM UP 0510	HF USPMG1 UP 0510	7,83	5.26
595	23.43	HF USPM UP 0595	HF USPMG1 UP 0595	9,13	6.14
680	26.77	HF USPM UP 0680	HF USPMG1 UP 0680	10,43	7.00
765	30.12	HF USPM UP 0765	HF USPMG1 UP 0765	11,73	7.88
850	33.46	HF USPM UP 0850	HF USPMG1 UP 0850	13,02	8.75

Belts wider than 850 mm available (increments of 85 mm).

Example: 850 + 85 = 935 mm width, without guide Ref. (in UP material) HF USPM UP 0935

Standard length for belts up to a width of 425 mm: 1,524 m (60 pitches).

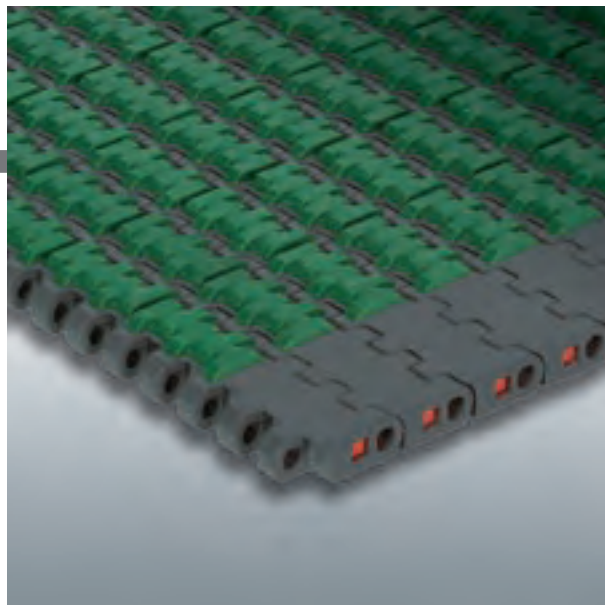
Wider belts available in any requested length.



Matveyor®

NEW

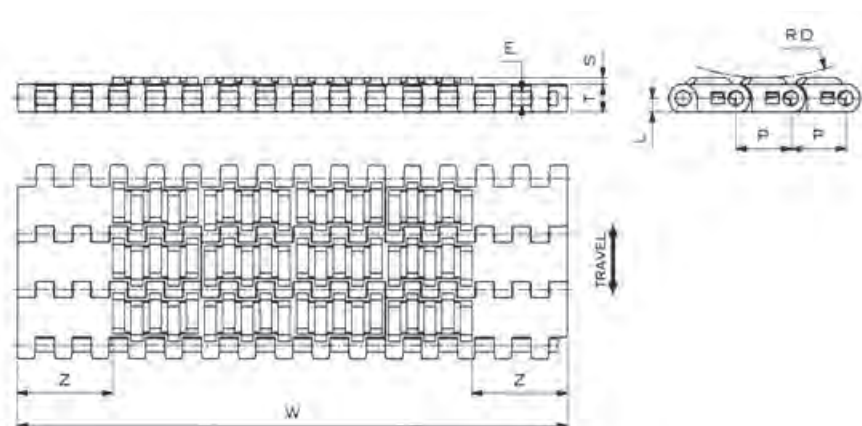
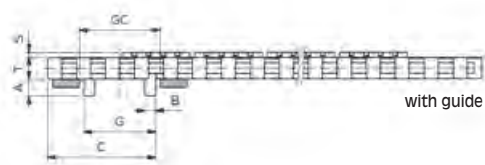
HFS USPM SERIES 1" PITCH, RUBBER SURFACE, SIDE INDENT MODULAR BELTS



Products	Ref.	Standard Materials UP
Side Indent	HFS USPM	
Side Indent with Guide	HFS USPMC1	

Belt widths: 255 mm (10.04") or wider in 85 mm (3.35") increments
 - Pin material: PBT
 - Rubber material: Thermoplastic
 - Rubber hardness: 80 ShA (see page 147)
 - Working Load (at 25°C/77°F): 35000 N/m (2,400 lb/ft)

Shoe guide position
Modular belt:



Dimension	mm	inches
A	10	.394
B	6,5	.256
C	63,5	2.5
E	6,26	.246
G	42,2	1.661
L	6,35	.25
P	25,4	1
RD	25	.984
S	3	.118
T	12,7	.5
GC	44	1.732
Z	43,9	1.728

HFS USPM (Side indent – 1" Pitch)



Belt material
see page 13



Sprockets and Idler
wheel see pages 229:231



Sprocket positioning
see pages 310:311

BELT NOMINAL WIDTH "W"		ACETAL RESIN (UP) REGINA REF.		BELT WEIGHT	
mm	inches	WITHOUT GUIDE	WITH GUIDE	kg/m	lbs/ft
255	10.04	HFS USPM UP 0255	HFS USPMC1 UP 0255	2,73	1.83
340	13.39	HFS USPM UP 0340	HFS USPMC1 UP 0340	3,68	2.47
425	16.73	HFS USPM UP 0425	HFS USPMC1 UP 0425	4,63	3.11
510	20.08	HFS USPM UP 0510	HFS USPMC1 UP 0510	5,58	3.75
595	23.43	HFS USPM UP 0595	HFS USPMC1 UP 0595	6,53	4.39
680	26.77	HFS USPM UP 0680	HFS USPMC1 UP 0680	7,48	5.03
765	30.12	HFS USPM UP 0765	HFS USPMC1 UP 0765	8,43	5.67
850	33.46	HFS USPM UP 0850	HFS USPMC1 UP 0850	9,38	6.30

Belts wider than 850 mm available (increments of 85 mm).

Example: 850 + 85 = 935 mm width, without guide Ref. (in UP material) HFS USPM UP 0935

Standard length for belts up to a width of 425 mm: 1,524 m (60 pitches).

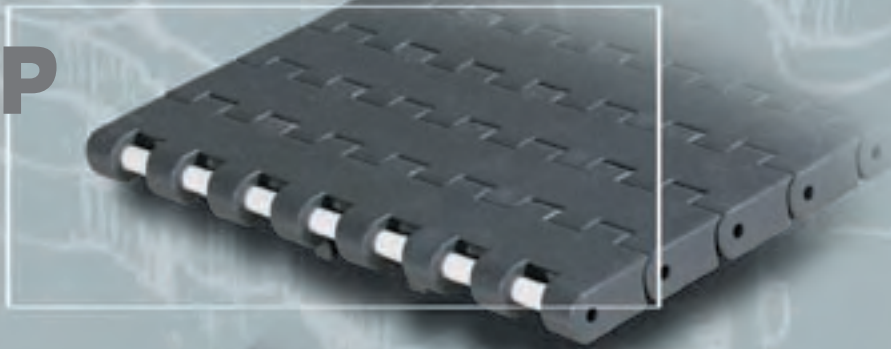
Wider belts available in any requested length.



Matveyor®

Heavy duty - American Standard

USP



793T



ULTOP®

UCC





USP SERIES - 1" PITCH, HEAVY DUTY

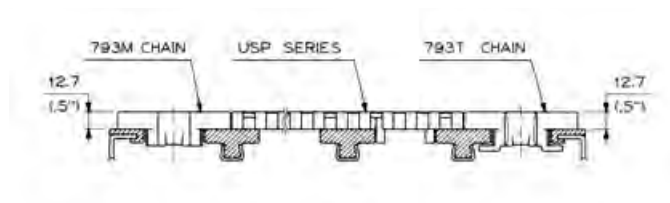
MODULAR PLASTIC BELTS, AMERICAN STANDARD

Installation guidelines

Widths according to American standards.
Dedicated widths: 3 ¼", 4 ½", 7 ½".
Brick laid modular belts in 1" increments.

USP series can be used together with magnetic or tab sideflexing chains 793 series (see pag. 141).
Same thickness of 12,7mm for easy installation side by side and standardization of wear strips.

For 90° products transfer, also availability of ATM (Active Transfer Modules) series (see pages 155÷157).

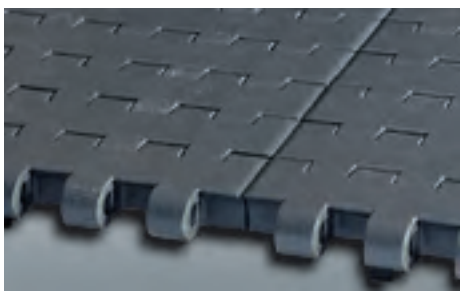


Features and Benefits



Large bottom sliding surface

The extremely large contact surface reduces the specific pressure with the wear strips and consequently the wear of the bottom surface of the belt (limited reduction in thickness).



Smooth and uniform surface

The surface near the edge of the modules which is critical for the side transfer of the products is uniform with no discontinuities. The side transfer of the products is not disturbed.



Easy assembly and disassembly

Retention clips can easily be moved from the side of the belt for assembling and disassembling. Only a small movement is required, the clip remains located in the module.

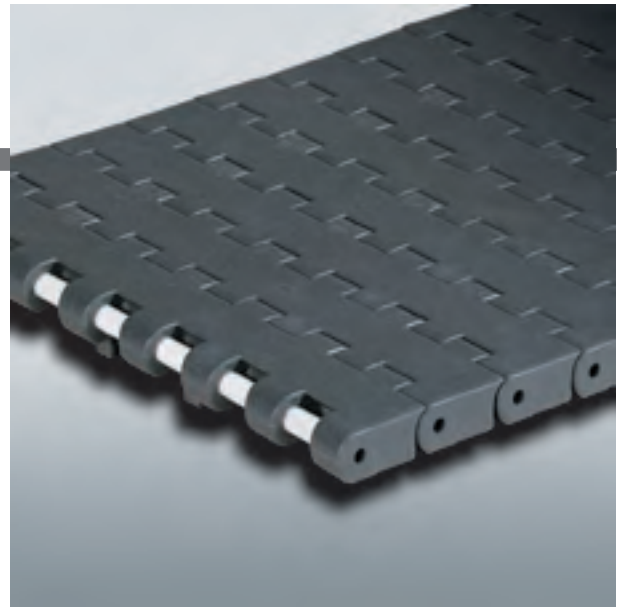


Matveyor®

USP SERIES - 1" PITCH, SOLID TOP

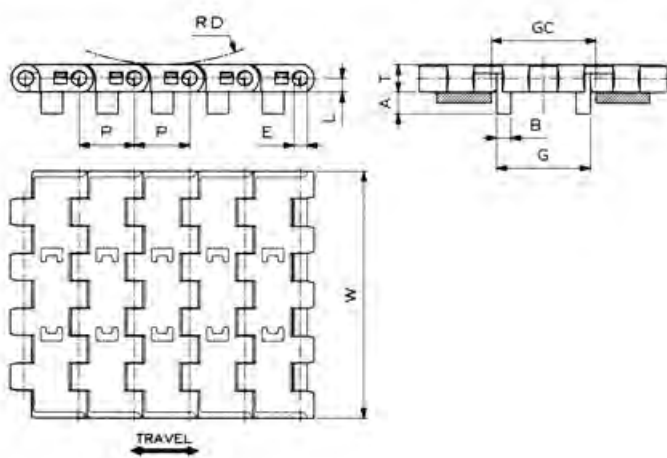
DEDICATED WIDTHS

Completely closed surface, no gap between the modules, even when engaging on the sprockets.
Particularly suitable for glass products.



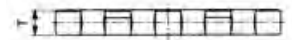
Products	Ref.	Standard Materials	
		UP	DK
Solid top	USP		
Solid top with guide	USPG		

Pin material: PBT



Dimension	mm	inches
A	10	.394
B	6,5	.256
E	6,26	.246
G	43	1.693
L	6,35	.25
P	25,4	1
RD	25	.984
GC	44.5	1.751

Shoe guide position
Dedicated width:



USP (Solid top – 1" Pitch)



Chain material
see page 13



Sprockets and Idler
wheel see pages 229-231



Sprocket positioning
see pages 314-316

MATERIAL	REGINA REF. WITHOUT GUIDE	REGINA REF. WITH GUIDE	CHAIN WIDTH W		PLATE THICKNESS T		WORKING LOAD (25°C/77°F)		CHAIN WEIGHT	
			mm	inches	mm	inches	N	lbs	kg/m	lbs/ft
ULTRA PERFORMANCE ACETAL RESIN (UP)	USP UP 325	USPG UP 325	82,6	3.25	12,7	0.50	2500	562	1,24	0.83
	USP UP 450	USPG UP 450	114,3	4.50	12,7	0.50	3430	770	1,71	1.15
	USP UP 750	USPG UP 750	190,5	7.50	12,7	0.50	5710	1,280	2,73	1.83
REGINA DK	USP DK 325	USPG DK 325	82,6	3.25	12,7	0.50	2500	562	1,24	0.83
	USP DK 450	USPG DK 450	114,3	4.50	12,7	0.50	3430	770	1,71	1.15
	USP DK 750	USPG DK 750	190,5	7.50	12,7	0.50	5710	1,280	2,73	1.83

Standard length: 3,048 m (10 feet)



Matveyor®

USP SERIES - 1" PITCH, SOLID TOP

MODULAR BELTS

Completely closed surface, no gap between the modules, even when engaging on the sprockets. Particularly suitable for glass products.

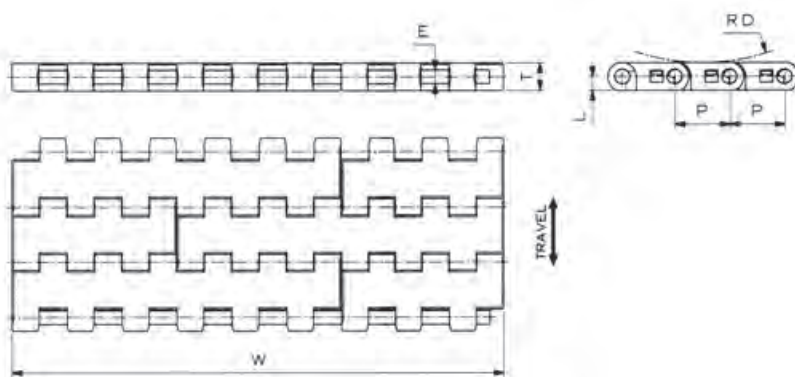


Products	Ref.	Standard Materials	
		UP	DK
Solid top	USP		

Belt widths: 152,4 mm (6") or wider in 76,2 mm (3") standard increments

- Pin material: PBT

- Working Load (at 25°C/77°F): 30000 N/m (2,055 lb/ft)



Dimension	mm	inches
E	6,26	.246
L	6,35	.25
P	25,4	1
RD	25	.984
T	12,7	.5
GC	44	.173

USP (Solid top – 1" Pitch)



Belt material see page 13



Sprockets see pages 229-231



Sprocket positioning see pages 314-316

BELT NOMINAL WIDTH "W"		ACETAL RESIN (UP)		REGINA DK		BELT WEIGHT	
mm	inches	REGINA REF.		REGINA REF.		kg/m	lbs/ft
152,4	6	USP UP 006		USP DK 006		2,15	1.45
228,6	9	USP UP 009		USP DK 009		3,18	2.14
304,8	12	USP UP 012		USP DK 012		4,24	2.85
381,0	15	USP UP 015		USP DK 015		5,27	3.54
457,2	18	USP UP 018		USP DK 018		6,37	4.28
533,4	21	USP UP 021		USP DK 021		7,43	4.99
609,6	24	USP UP 024		USP DK 024		8,41	5.65
685,8	27	USP UP 027		USP DK 027		9,56	6.43
762,0	30	USP UP 030		USP DK 030		10,62	7.14
838,2	33	USP UP 033		USP DK 033		11,68	7.85
914,4	36	USP UP 036		USP DK 036		12,75	8.57
990,6	39	USP UP 039		USP DK 039		13,81	9.28
1066,8	42	USP UP 042		USP DK 042		14,87	9.99
1143,0	45	USP UP 045		USP DK 045		15,93	10.71
1219,2	48	USP UP 048		USP DK 048		17,00	11.43
1295,4	51	USP UP 051		USP DK 051		18,06	12.14
1371,6	54	USP UP 054		USP DK 054		19,12	12.85
1447,8	57	USP UP 057		USP DK 057		20,18	13.56
1524,0	60	USP UP 060		USP DK 060		21,25	14.28

Belts wider than 1524mm (60") available, with standard increments of 76,2mm (3").

Example: 60+3=63 inches Ref. (in UP material) USP UP 063.

Also available on request increments of 25,4mm (1").

Example: 48+1=49 inches Ref. (in UP material): USP UP 049.

Belts available in the requested length.

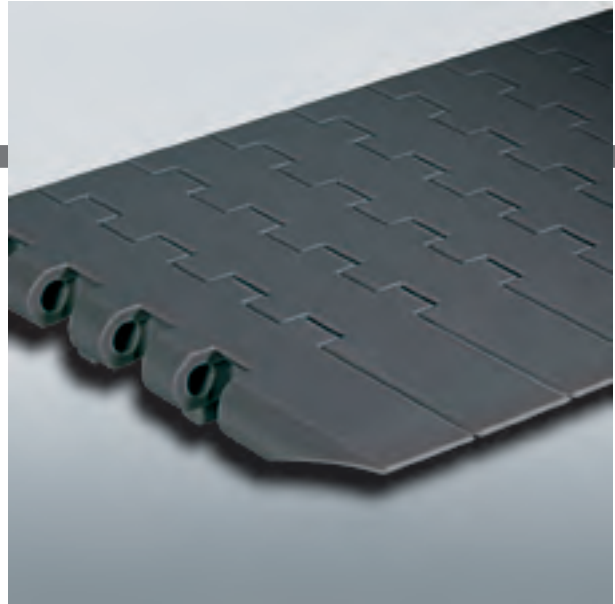


Matveyor®

USP SERIES - 1" PITCH, SOLID TOP

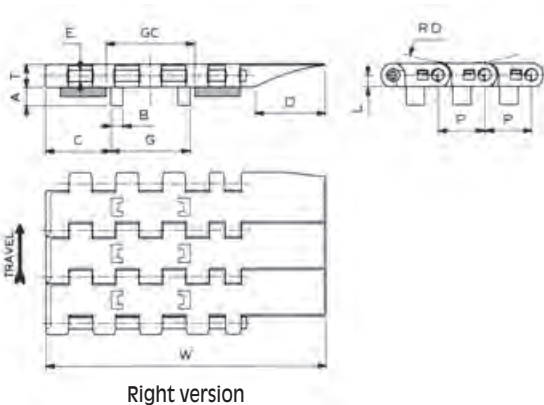
ACTIVE TRANSFER MODULES

To be used in combination with USP belts series.
 Active transfer modules USPGATM series allow the transfer of the products between two 90° conveyor tracks without using dead plates. The special module profile, wing shaped, supports the products dynamically during transfer on the take-away belt.
 Available left and right version.

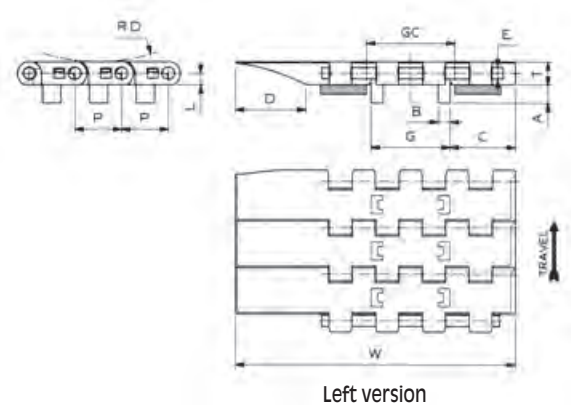


Products	Ref.	Standard Materials	
		UP	DK
Solid top with guide	USPGATM		

Pin material: PBT



Dimension	mm	inches
A	10	.394
B	6,5	.256
C(K4½")	35,5	1.398
C(K7½")	73,6	2.898
D	38,1	1.5
E	6,26	.246
G	43	1.693
L	6,35	.25
P	25,4	1
RD	25	.984
GC	46	1.811



NEW

USPGATM (Solid top - Right Version)



Chain material see page 13



Sprockets and Idler wheel see pages 229-231



Sprocket positioning see pages 315-317

MATERIAL	REGINA REF.	CHAIN WIDTH W		PLATE THICKNESS T		WORKING LOAD (25°C/77°F)		CHAIN WEIGHT	
		mm	inches	mm	inches	N	lbs	kg/m	lbs/ft
ULTRA PERFORMANCE ACETAL RESIN (UP)	USPGATM UP 450 DX	152,4	6	12,7	0.50	3480	780	1,93	1.30
	USPGATM UP 750 DX	228,6	9	12,7	0.50	5715	1,280	2,97	1.99
REGINA DK	USPGATM DK 450 DX	152,4	6	12,7	0.50	3480	780	1,93	1.30
	USPGATM DK 750 DX	228,6	9	12,7	0.50	5715	1,280	2,97	1.99

Standard length: 3,048 m (10 feet)

USPGATM (Solid top - Left Version)



Chain material see page 13



Sprockets and Idler wheel see pages 229-231



Sprocket positioning see pages 315-317

MATERIAL	REGINA REF.	CHAIN WIDTH W		PLATE THICKNESS T		WORKING LOAD (25°C/77°F)		CHAIN WEIGHT	
		mm	inches	mm	inches	N	lbs	kg/m	lbs/ft
ULTRA PERFORMANCE ACETAL RESIN (UP)	USPGATM UP 450 SX	152,4	6	12,7	0.50	3480	780	1,93	1.30
	USPGATM UP 750 SX	228,6	9	12,7	0.50	5715	1,280	2,97	1.99
REGINA DK	USPGATM DK 450 SX	152,4	6	12,7	0.50	3480	780	1,93	1.30
	USPGATM DK 750 SX	228,6	9	12,7	0.50	5715	1,280	2,97	1.99

Standard length: 3,048 m (10 feet)



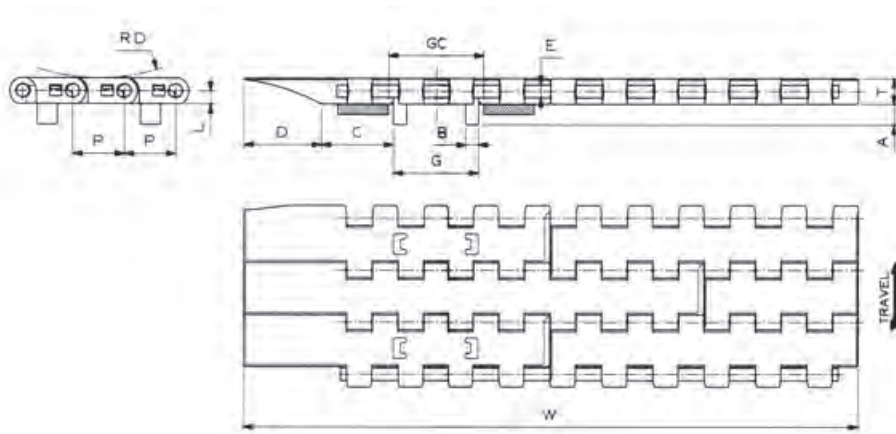
Matveyor®

USP SERIES - 1" PITCH, SOLID TOP

ACTIVE TRANSFER MODULES
MODULAR BELTS LEFT VERSION



Products	Ref.	Standard Materials	
		UP	DK
Solid top with guide	USPGATM		
Belt widths: total width (with wing) 12" (304.8 mm) or wider in 3" (76,2 mm) increments			
- Pin material: PBT			
- Working Load (at 25°C/77°F): 30000 N/m (2,055 lb/ft)			



Dimension	mm	inches
A	10	.394
B	6,5	.256
C	35,5	1.398
D	38,1	1.5
E	6,26	.246
G	43	1.693
L	6,35	.25
P	25,4	1
RD	25	.984
T	12,7	.5
GC	46	1.811

USPGATM (Modular belts - Left Version)



Belt material
see page 13



Sprockets and Idler
wheel see pages 229:231



Sprocket positioning
see pages 315-317

BELT NOMINAL WIDTH "W"		ACETAL RESIN (UP)	REGINA DK	BELT WEIGHT	
mm	inches	REGINA REF.	REGINA REF.	kg/m	lbs/ft
304,8	12	USPGATM UP 010M SX	USPGATM DK 010M SX	4,01	2.70
381,0	15	USPGATM UP 013M SX	USPGATM DK 013M SX	5,08	3.41
457,2	18	USPGATM UP 016M SX	USPGATM DK 016M SX	6,14	4.13
533,4	21	USPGATM UP 019M SX	USPGATM DK 019M SX	7,20	4.84
609,6	24	USPGATM UP 022M SX	USPGATM DK 022M SX	8,27	5.56
685,8	27	USPGATM UP 025M SX	USPGATM DK 025M SX	9,33	6.27

On request, belts wider than 685,8 mm (27") available, with standard increments of 76,2 mm (3").
Example: 27+3=30 inches Ref. (in DK material): USPGATM DK 028M SX

Wider belts available in any requested length.

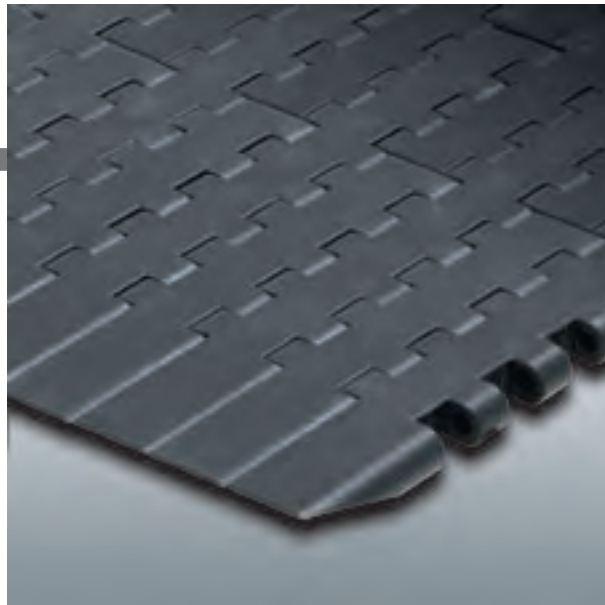


Matveyor®

NEW

USP SERIES - 1" PITCH, SOLID TOP

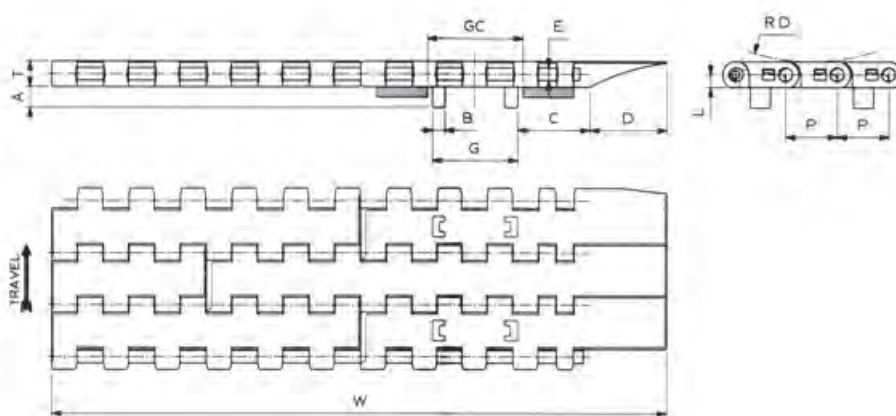
ACTIVE TRANSFER MODULES
MODULAR BELTS RIGHT VERSION



Products	Ref.	Standard Materials	
		UP	DK
Solid top with guide	USPGATM		

Belt widths: total width (with wing) 12" (304.8 mm) or wider in 3" (76,2 mm) increments

- Pin material: PBT
- Working Load (at 25°C/77°F): 30000 N/m (2,055 lb/ft)



Dimension	mm	inches
A	10	.394
B	6,5	.256
C	35,5	1.398
D	38,1	1.5
G	43	1.693
L	6,35	.25
P	25,4	1
RD	25	.984
T	12,7	.5
GC	46	1.811

USPGATM (Modular belts - Right Version)



Belt material
see page 13



Sprockets and Idler
wheel see pages 229÷231



Sprocket positioning
see pages 315-317

BELT NOMINAL WIDTH "W"		ACETAL RESIN (UP)	REGINA DK	BELT WEIGHT	
mm	inches	REGINA REF.	REGINA REF.	kg/m	lbs/ft
304,8	12	USPGATM UP 010M DX	USPGATM DK 010M DX	4,01	2.70
381,0	15	USPGATM UP 013M DX	USPGATM DK 013M DX	5,08	3.41
457,2	18	USPGATM UP 016M DX	USPGATM DK 016M DX	6,14	4.13
533,4	21	USPGATM UP 019M DX	USPGATM DK 019M DX	7,20	4.84
609,6	24	USPGATM UP 022M DX	USPGATM DK 022M DX	8,27	5.56
685,8	27	USPGATM UP 025M DX	USPGATM DK 025M DX	9,33	6.27

On request, belts wider than 685,8 mm (27") available, with standard increments of 76,2 mm (3").
Example: 27+3=30 inches Ref. (in DK material): USPGATM DK 028M DX

Wider belts available in any requested length.



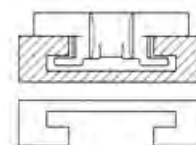
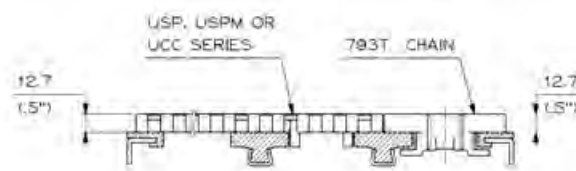
793T SERIES - 1" PITCH, HEAVY DUTY SIDEFLEXING CHAINS

Installation guidelines

Matveyor® sideflexing chain 793T can be used on conveyors side by side with ULTOP® UCC and Matveyor® USP and USPM series. Same thickness of 12,7mm for easy installation side by side and standardization of wear strips.

For 793T series see page 142.

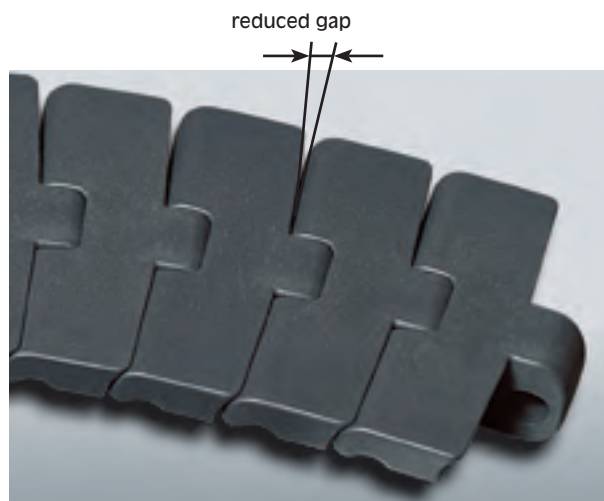
Tab chains 793T use the same curves as Flitetop® plastic chains 880T, 879T and Flitetop® steel chains 881T and 981T. (for TAB curves see pag. 280)



Features and Benefits

Gentle product handling

The small 1" pitch-top plate combination results in a very low gap between flights. Availability of materials with extremely low friction coefficients (see pag. 13).



Standardization in conveyor construction

Easy installation side by side with Matveyor® and Ultop® belts.





ULTOP[®]



UCC SERIES - 1 1/2" PITCH, HEAVY DUTY

DEDICATED WIDTHS, AMERICAN STANDARD

Installation guidelines

Chain widths according to American standard sizes.
Dedicated widths 3 1/4", 4 1/2", 6", 7 1/2", 12, 15", 18" and 24".
Active transfer modules for 90° transfer without dead plates.

Features and Benefits

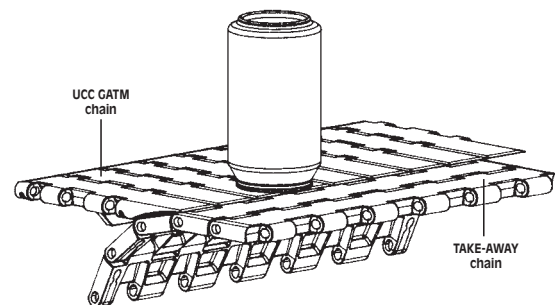
Smooth and uniform surface, special edge profiles

The surface near the edge of the modules is uniform with no discontinuities. Thus, the side transfer of the products is not disturbed. The special edge profile is designed for smooth transfer of products, even when the two side by side belts may have a different thickness due to normal wear.



Availability of active transfer modules

Elimination of dead plates at 90° corners, thanks to the wing shaped ATM modules (see pag. 161).
A tippage-free transfer with self clearing corners is feasible because products are actively transferred from the ATM modules to the take-away conveyors.



Easy assembly and disassembly

Snapsert™ snaps into place to secure pins. Allows quick assembly/disassembly from either side and the reuse of pins.



Reliability in heavy duty application

Completely closed surface, no gap between the flights even when engaging the sprocket.
Equipped by stainless steel pins, recommended for heavy duty application because of their superior mechanical characteristics. Heavy duty sprocket teeth.



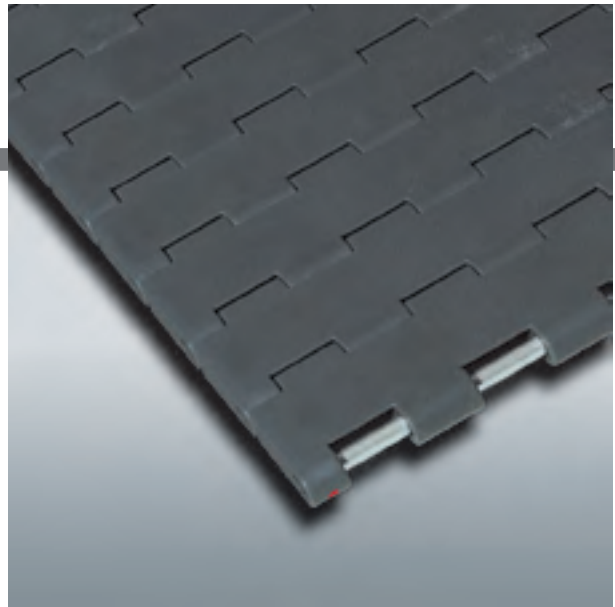


ULTOP®

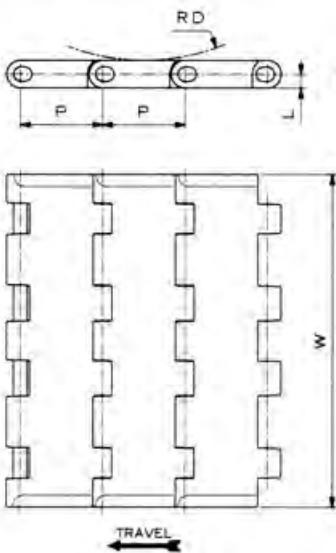
UCC SERIES - 1 1/2" PITCH, SOLID TOP

DEDICATED WIDTHS

Stainless steel pins for ideal performance in heavy duty applications. A complete range of dedicated width chains. Completely closed surface, no gap between the modules, even when engaging the sprockets. Particularly suitable for glass bottles lines and glass manufacturing.



Products	Ref.	Standard Materials	
		DK	ULF
Solid top	UCCSS		
Pin material: austenitic stainless steel			on request



Dimension	mm	inches
E	6,26	.246
L	6,35	.25
P	38,1	1.5
RD	40	1.575

UCC (Solid top – 1 1/2" Pitch)



Chain material see page 13



Sprockets see page 232



Sprocket positioning see pages 318-319

MATERIAL	REGINA REF.	CHAIN WIDTH W		PLATE THICKNESS T		WORKING LOAD (25°C/77°F)		CHAIN WEIGHT	
		mm	inches	mm	inches	N	lbs	kg/m	lbs/ft
REGINA DK	DK UCC 325 SS	82,6	3.2	12,7	0.50	2505	563	1,37	0.92
	DK UCC 450 SS	114,3	4.5	12,7	0.50	3469	780	1,84	1.24
	DK UCC 600 SS	152,4	6.0	12,7	0.50	4625	1,039	2,5	1.68
	DK UCC 750 SS	190,5	7.5	12,7	0.50	5781	1,299	3,02	2.03
	DK UCC 1200 SS	304,8	12.0	12,7	0.50	9270	2,083	4,88	3.28
	DK UCC 1500 SS	381,0	15.0	12,7	0.50	11590	2,604	6,04	4.06
	DK UCC 1800 SS	457,2	18.0	12,7	0.50	13900	3,123	7,26	4.88
	DK UCC 2400 SS	609,6	24.0	12,7	0.50	18540	4,165	9,72	6.53

Standard length: 3,048 m (10 feet)



ULTOP[®]

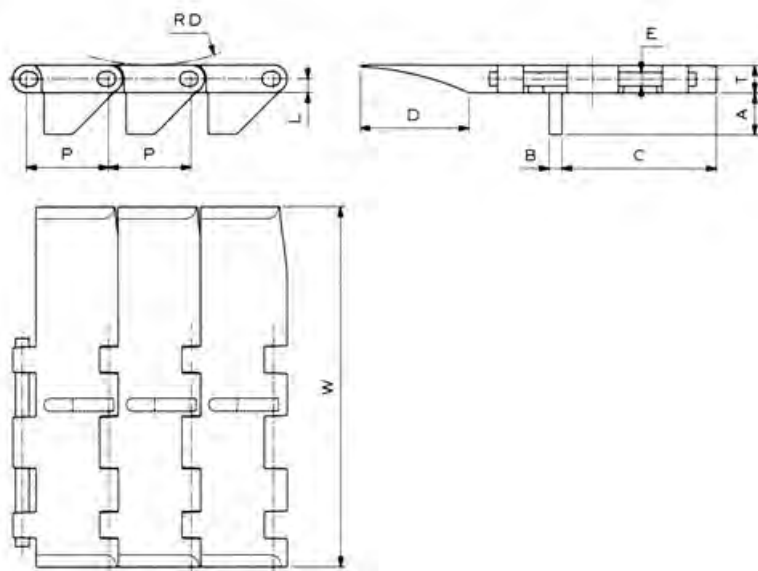
UCC SERIES - 1 1/2" PITCH, SOLID TOP

ACTIVE TRANSFER MODULES

Active transfer modules UCCGATM allow transfer of products between two 90° conveyor tracks without using dead plates. The special wing shaped module profile supports the products dynamically during transfer on the take-away belt.



Products	Ref.	Standard Materials	
		DK	ULF
Solid top	UCCGATMSS		
Pin material: austenitic stainless steel			on request



Dimension	mm	inches
A	19	.748
B	5,9	.232
C(450)	71,4	2.811
C(750)	139,5	5.492
D	50,8	2
E	6,26	.246
L	6,35	.25
P	38,1	1.5
RD	40	.787

UCCGATM (Solid top - 1 1/2" Pitch)



Chain material see page 13



Sprockets see page 232



Sprocket positioning see pages 318-320

MATERIAL	REGINA REF.	CHAIN WIDTH W		PLATE THICKNESS T		WORKING LOAD (25°C/77°F)		CHAIN WEIGHT	
		mm	inches	mm	inches	N	lbs	kg/m	lbs/ft
REGINA DK	DK UCC 450GATM SS	165,1	6.5	12,7	0.50	3469	780	2,21	1.49
	DK UCC 750GATM SS	241,3	9.5	12,7	0.50	5781	1,299	3,42	2.30

Standard length: 3,048 m (10 feet)



ULTOP[®]

UCC138 SERIES - 3/4" PITCH, SOLID TOP

DEDICATED WIDTHS

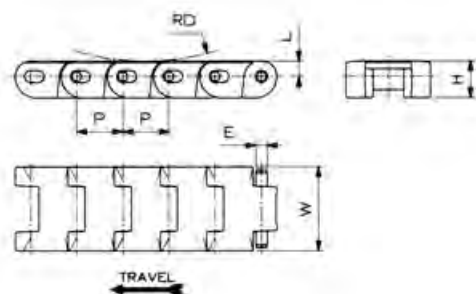
Optimum support of the conveyed products, no risk for flight detachment (compared to two piece chains).

No gap between the flights even when engaging the sprockets. Particularly suitable for packaging machines applications.



Products	Ref.	Standard Materials ULF
Solid top	UCC138SS	

Pin material: austenitic stainless steel



Dimension	mm	inches
E	4,76	.187
L	6,35	.25
P	19,05	.750
RD	20	.787

UCC138 (Solid top - 3/4" Pitch)



Sprockets see page 233

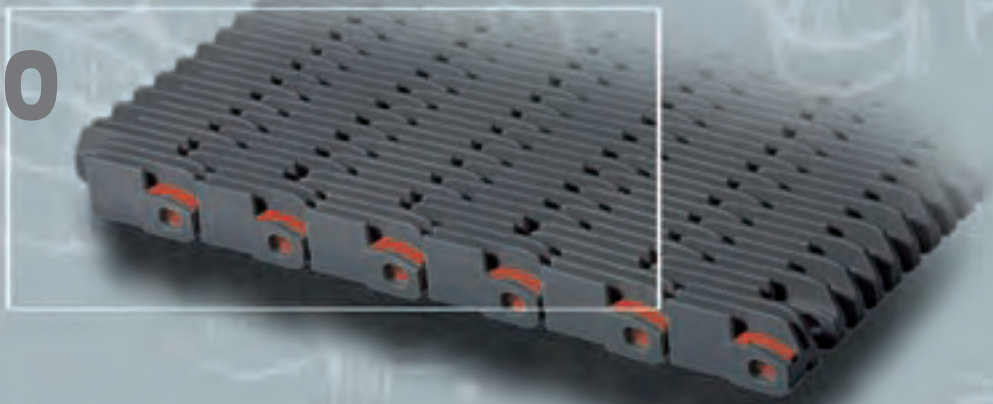
MATERIAL	REGINA REF.	CHAIN WIDTH W		PLATE THICKNESS H		WORKING LOAD (25°C/77°F)		CHAIN WEIGHT	
		mm	inches	mm	inches	N	lbs	kg/m	lbs/ft
ULF	UCC 138 SS	34,9	1.4	15,0	0.59	1225	275	0,68	0.46

Standard length: 3,048 m (10 feet)

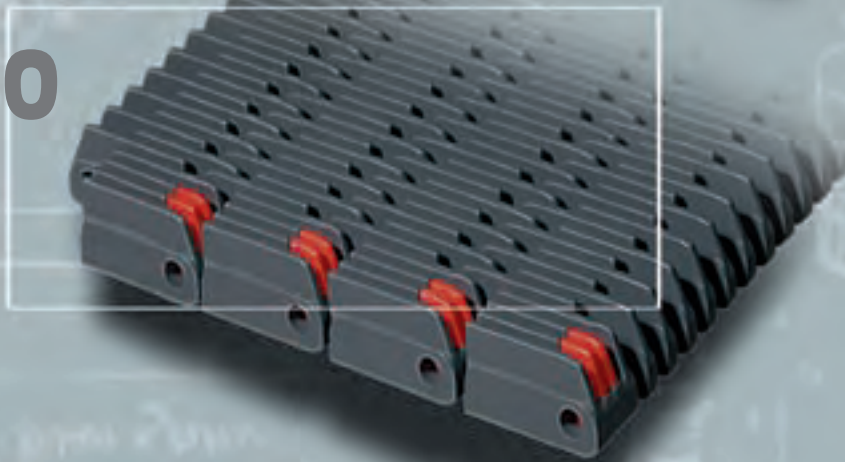


Matveyor®
Heavy duty Raised Rib

3110



3120



C24





3110, 3120 AND C24 SERIES 2" PITCH, HEAVY DUTY, RAISED RIB

MODULAR PLASTIC BELTS

Installation guidelines

The modular plastic belts 3120, 3110 and C24 are used in combination with combs for the head transfer of the products. Different combs and sprockets are available for the maximum flexibility in conveyor lay-out definition. See page 293 for the recommended sprocket/comb matching.

Benefits

Uniform and optimum conveying surface

The ideal ratio rib thickness/spacing offers high support for the most unstable products such as PET bottles with petaloid bottom.

Reliable drive

Accurate tooth profile with a large cross section ensures high capacity and long wear life of sprockets and modules. The central pocket makes these belts bidirectional.

Easy assembly and disassembly of the belt

These belts have retaining clips for easy assembly and disassembly.

Range

3110: High mechanical strength

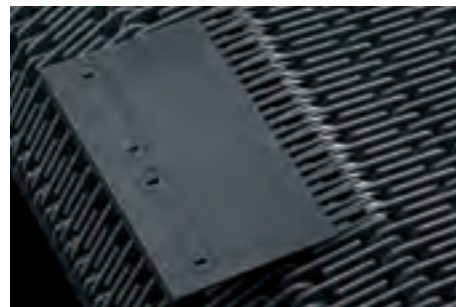
Due to its high working load, the 3110 belt can be used for the most demanding applications such as process conveyors with high product load and long distance. The cross rib design offers high lateral strength.

3120: Optimum combination open area/mechanical strength

Very good liquid drainage and mechanical strength.

C24: Good combination open area/mechanical strength

Optimum liquid drainage and good mechanical strength.



In particular 3120 belts have integrated clips located into the module, which can be easily rotated to remove the rod.





Matveyor®

3110 SERIES - 2" PITCH, RAISED RIB

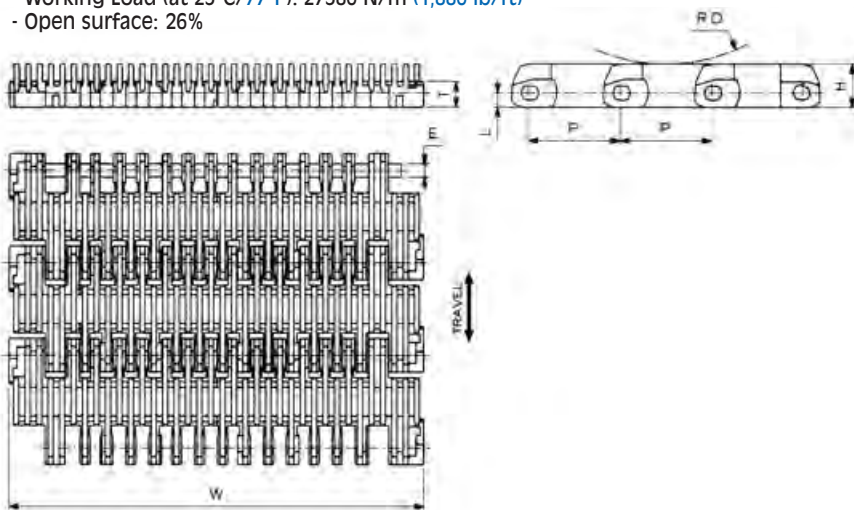
MODULAR BELTS

The ideal ratio rib thickness/spacing offers high support even for the most unstable products such as PET bottles with petaloid bottom. Very good liquid drainage and mechanical strength. Due to its high working load, the 3110 belt can be used for the most demanding applications such as process conveyors with high product load and long distance. The open area of raised rib belt guarantees optimum drainage of liquids and mechanical strength; it is also designed for easy cleaning and cooling or warming of products. The cross rib design offers high lateral strength.



Products	Ref.	Standard Materials
		PP
Raised Rib	3110	

- Belt widths: 12" (304,8 mm) or wider in 3" (76,2 mm) increments
- Pin material: PP- Polypropylene
- Working Load (at 25°C/77°F): 27380 N/m (1,880 lb/ft)
- Open surface: 26%



Dimension	mm	inches
E	7,2	.283
H	23,9	.941
L	7,9	.311
P	50,8	2
RD	9,7	.382
R	76,2	3
T	14,2	.560



Belt material
see page 13



Sprockets see
pages 234÷235



Sprocket positioning
see pages 321÷322



Combs see
page 292

3110 (Raised Rib - 2" Pitch)

BELT NOMINAL WIDTH "W"		POLYPROPYLENE PP		BELT WEIGHT	
mm	inches	REGINA REF.		kg/m	lbs/ft
304,8	12	3110 PP 012		3,50	2.35
381,0	15	3110 PP 015		4,35	2.92
457,2	18	3110 PP 018		5,21	3.50
533,4	21	3110 PP 021		6,06	4.07
609,6	24	3110 PP 024		6,93	4.66
685,8	27	3110 PP 027		7,78	5.23
762,0	30	3110 PP 030		8,64	5.81
838,2	33	3110 PP 033		9,49	6.38
914,4	36	3110 PP 036		10,35	6.96
990,6	39	3110 PP 039		11,20	7.53
1066,8	42	3110 PP 042		12,07	8.11
1143,0	45	3110 PP 045		12,92	8.68
1219,2	48	3110 PP 048		13,78	9.26
1295,4	51	3110 PP 051		14,63	9.83
1371,6	54	3110 PP 054		15,50	10.42
1447,8	57	3110 PP 057		16,35	10.99
1524,0	60	3110 PP 060		17,21	11.57

Belts wider than 1524 mm (60") available, with increments of 76,2 mm (3").
Example: 60 + 3 = 63 inches Ref. 3110 PP 063.

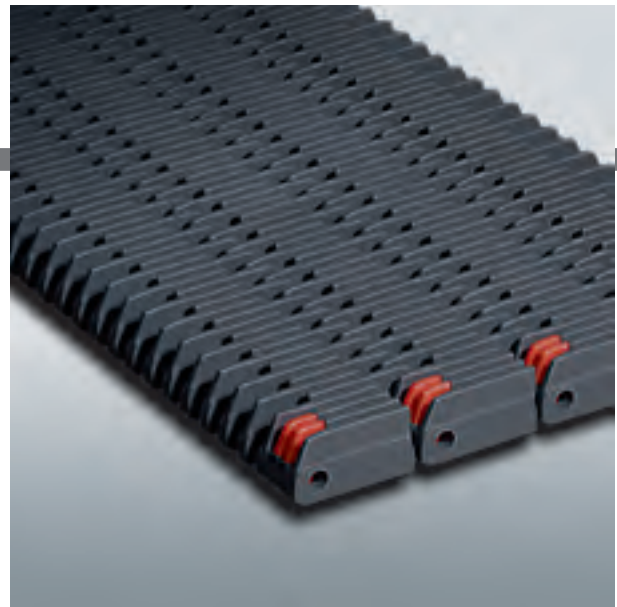
Belt available in the requested length.



Matveyor®

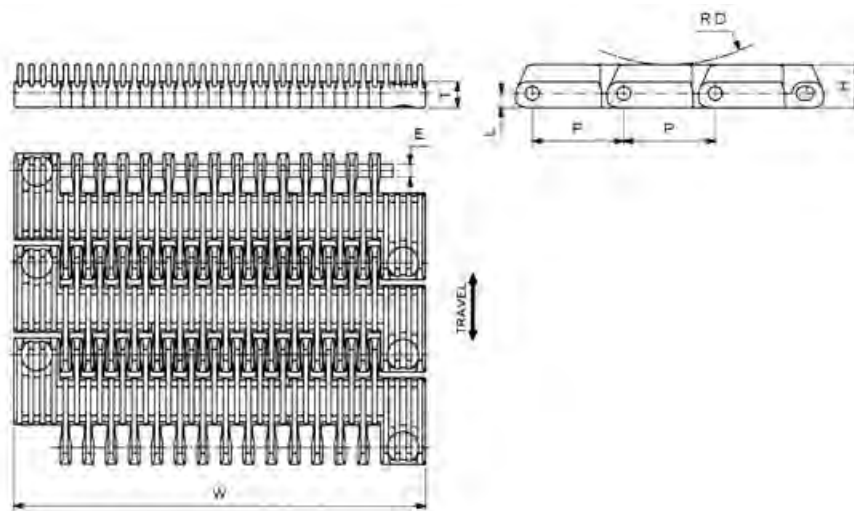
3120 SERIES - 2" PITCH, RAISED RIB MODULAR BELTS

The ideal ratio rib thickness/spacing offers high support even for the most unstable products such as PET bottles with petaloid bottom. The open area of raised rib belt guarantees optimum drainage of liquids and mechanical strength; it is also designed for easy cleaning and cooling or warming of products.



Products	Ref.	Standard Materials PP
Raised Rib	3120	

- Belt widths: **12"** (304,8 mm) or wider in **3"** (76,2 mm) increments
 - Pin material: PP- Polypropylene
 - Working Load (at 25°C/77°F): 24670 N/m (1,690 lb/ft)
 - Open surface: 29%



Dimension	mm	inches
E	7,2	.283
H	23,9	.941
L	7,9	.311
P	50,8	2
R	9,7	.382
RD	76,2	3
T	14,2	.560

3120 (Raised Rib - 2" Pitch)



Belt material
see page 13



Sprockets see
pages 234÷235



Sprocket positioning
see pages 321÷322



Combs see
page 292

BELT NOMINAL WIDTH "W"		POLYPROPYLENE PP		BELT WEIGHT	
mm	inches	REGINA REF.		kg/m	lbs/ft
304,8	12	3120 PP 012		3,30	2.22
381,0	15	3120 PP 015		4,13	2.78
457,2	18	3120 PP 018		4,94	3.32
533,4	21	3120 PP 021		5,78	3.88
609,6	24	3120 PP 024		6,58	4.42
685,8	27	3120 PP 027		7,40	4.97
762,0	30	3120 PP 030		8,21	5.52
838,2	33	3120 PP 033		9,05	6.08
914,4	36	3120 PP 036		9,84	6.61
990,6	39	3120 PP 039		10,66	7.16
1066,8	42	3120 PP 042		11,18	7.51
1143,0	45	3120 PP 045		12,31	8.27
1219,2	48	3120 PP 048		13,11	8.81
1295,4	51	3120 PP 051		13,93	9.36
1371,6	54	3120 PP 054		14,74	9.91
1447,8	57	3120 PP 057		15,58	10.47
1524,0	60	3120 PP 060		16,37	11.00

Belts wider than 1524 mm (60") available, with increments of 76,2 mm (3").

Example: 60 + 3 = 63 inches Ref. 3120 PP 063.

On request, belts available in 1.5" (38,1 mm) increments, starting from 12" (304,8 mm).

Example: 45+1.5 = 46.5 inches Ref. 3120 PP 046M

Belt available in the requested length.



Matveyor®

C24 CAM-CLEAN® SERIES 2" PITCH, RAISED RIB

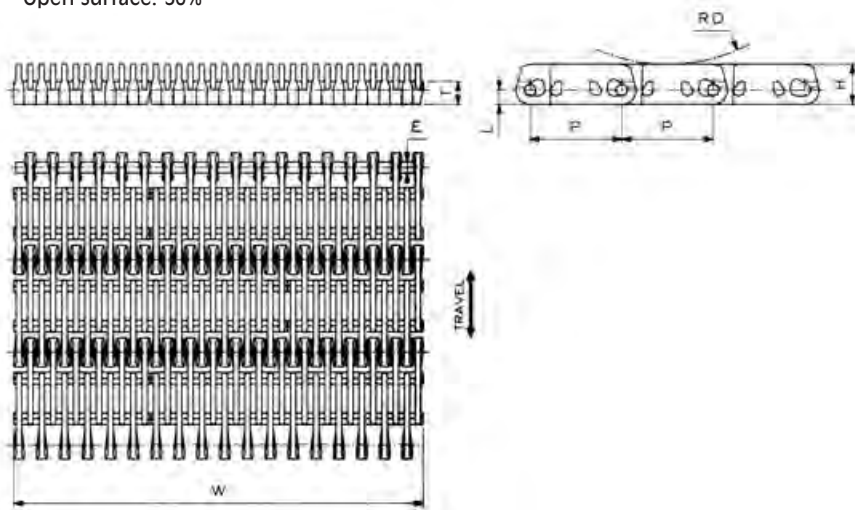
MODULAR BELTS

The ideal ratio rib thickness/spacing offers high support even for the most unstable products such as PET bottles with petaloid bottom. The open area of raised rib belt guarantees optimum drainage of liquids and mechanical strength; it is also designed for easy cleaning and cooling or warming of products.



Products	Ref.	Standard Materials PP
Raised Rib	C24	

- Belt widths: 12" (304,8 mm) or wider in 3" (76,2 mm) increments
- Pin material: PP- Polypropylene
- Working Load (at 25°C/77°F): 18500 N/m (1,270 lb/ft)
- Open surface: 30%



Dimension	mm	inches
E	6,20	.244
H	22,2	.874
L	7,9	.311
P	50,8	2
R	9,5	.374
RD	76,2	3
T	12,7	.5

C24 (Raised Rib - 2" Pitch)



Belt material
see page 13



Sprockets see
pages 234÷235



Sprocket positioning
see pages 321÷322



Combs see
page 292

BELT NOMINAL WIDTH "W"		POLYPROPYLENE PP		BELT WEIGHT	
mm	inches	REGINA REF.		kg/m	lbs/ft
304,8	12	C24 PP 012		2,91	1.96
381,0	15	C24 PP 015		3,64	2.45
457,2	18	C24 PP 018		4,37	2.94
533,4	21	C24 PP 021		4,91	3.30
609,6	24	C24 PP 024		5,82	3.91
685,8	27	C24 PP 027		6,54	4.40
762,0	30	C24 PP 030		7,27	4.89
838,2	33	C24 PP 033		8,00	5.38
914,4	36	C24 PP 036		8,73	5.87
990,6	39	C24 PP 039		9,45	6.35
1066,8	42	C24 PP 042		10,18	6.84
1143,0	45	C24 PP 045		10,90	7.33
1219,2	48	C24 PP 048		11,64	7.82
1295,4	51	C24 PP 051		12,36	8.31
1371,6	54	C24 PP 054		13,08	8.79
1447,8	57	C24 PP 057		13,81	9.28
1524,0	60	C24 PP 060		14,53	9.77

Belts wider than 1524 mm (60") available, with increments of 76,2 mm (3").

Example: 60 + 3 = 63 inches Ref. C24 PP 063.

On request, belts available in 1" (25,4 mm) increments, starting from 12" (304,8 mm).

Example: 45+1 = 46 inches Ref. C24 PP 046

Belt available in the requested length.